

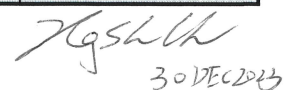
Temperature Record
Investigational Product Stored at Room Temperature (15 to 25 °C)
CH03

Model: TP213023

PHRCR1 (B1)

Date (DD/MMM/YYYY)	Time (24hr)	Temperature (°C)			Signature (Initial)	Comments
		Now	Max	Min		
01 / DEC / 2023	0907	20.2	20.7	19.9	HSC	
02 / DEC / 2023	0900	19.9	20.6	19.6	HSC	
03 / DEC / 2023						Sunday
04 / DEC / 2023	0909	21.3	22.0	19.5	HSC	
05 / DEC / 2023	0910	20.2	22.1	20.0	HSC	
06 / DEC / 2023	0819	20.0	20.5	19.8	KLH	
07 / DEC / 2023	0939	20.4	21.1	19.9	HSC	
08 / DEC / 2023	0903	20.2	21.1	19.8	HSC	
09 / DEC / 2023	0916.	20.1	20.7	19.8	JW	
10 / DEC / 2023						Sunday
11 / DEC / 2023	0938	20.2	20.3	19.2	KLH	
12 / DEC / 2023	0933	20.3	21.0	19.9	KLH	
13 / DEC / 2023	0901	19.9	20.6	19.5	HSC	
14 / DEC / 2023	0900	20.1	20.2	19.6	HSC	
15 / DEC / 2023	0901	20.4	21.2	19.8	HSC	
16 / DEC / 2023	0907	20.1	20.8	19.6	KLH	
17 / DEC / 2023						Sunday
18 / DEC / 2023	0819	20.5	20.8	19.8	KLH	
19 / DEC / 2023	0857	20.3	22.8	20.1	HSC	
20 / DEC / 2023	0851	20.0	21.1	20.0	HSC	
21 / DEC / 2023	0912	19.9	22.1	19.7	HSC	
22 / DEC / 2023	0856	19.3	20.5	19.0	HSC	
23 / DEC / 2023	0826.	19.8	19.9	19.0	JW	
24 / DEC / 2023						Sunday
25 / DEC / 2023	0837	18.8	22.0	18.7	KLH	
26 / DEC / 2023	0907	19.4	20.1	18.8	HSC	
27 / DEC / 2023	0901	18.9	21.0	18.5	HSC	
28 / DEC / 2023	0921	20.2	20.6	18.9	HSC	
29 / DEC / 2023	0904	19.5	21.3	19.1	HSC	
30 / DEC / 2023	0804	19.3	19.8	19.2	HSC	
31 / DEC / 2023						Sunday

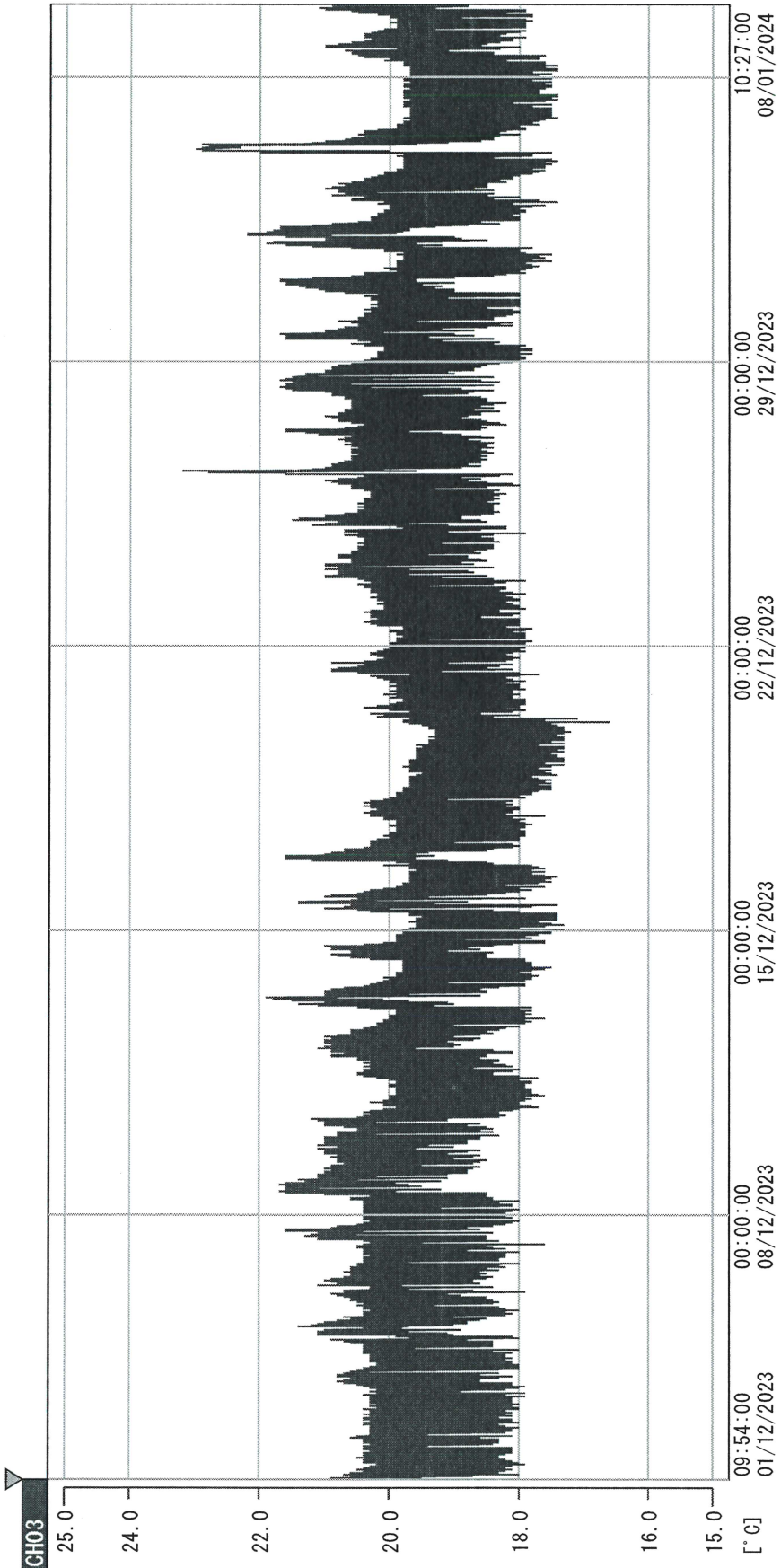
Pharmacist:



30 DEC 2023

0000_231201095333.dlm

DISP_GRP_1



01/12/2023 09:54:00

1. OPT	-24.2 [°C]	2. Multi	-20.2 [°C]	3. B1GT	21.1 [°C]	4. SC-140	4.7 [°C]
22110907	5.0 [°C]	6. 201SAR	23.7 [°C]	22100813	4.2 [°C]	8. B2GT	19.1 [°C]
22070604	4.6 [°C]	10. KCC-3	23.0 [°C]	TAG01	-75.0 [°C]	TAG01	-75.0 [°C]

Handwritten signature

08 JAN 2024