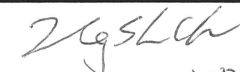


Temperature Record
Investigational Product Stored at Room Temperature (15 to 25 °C)
CH08

Model: TP213039

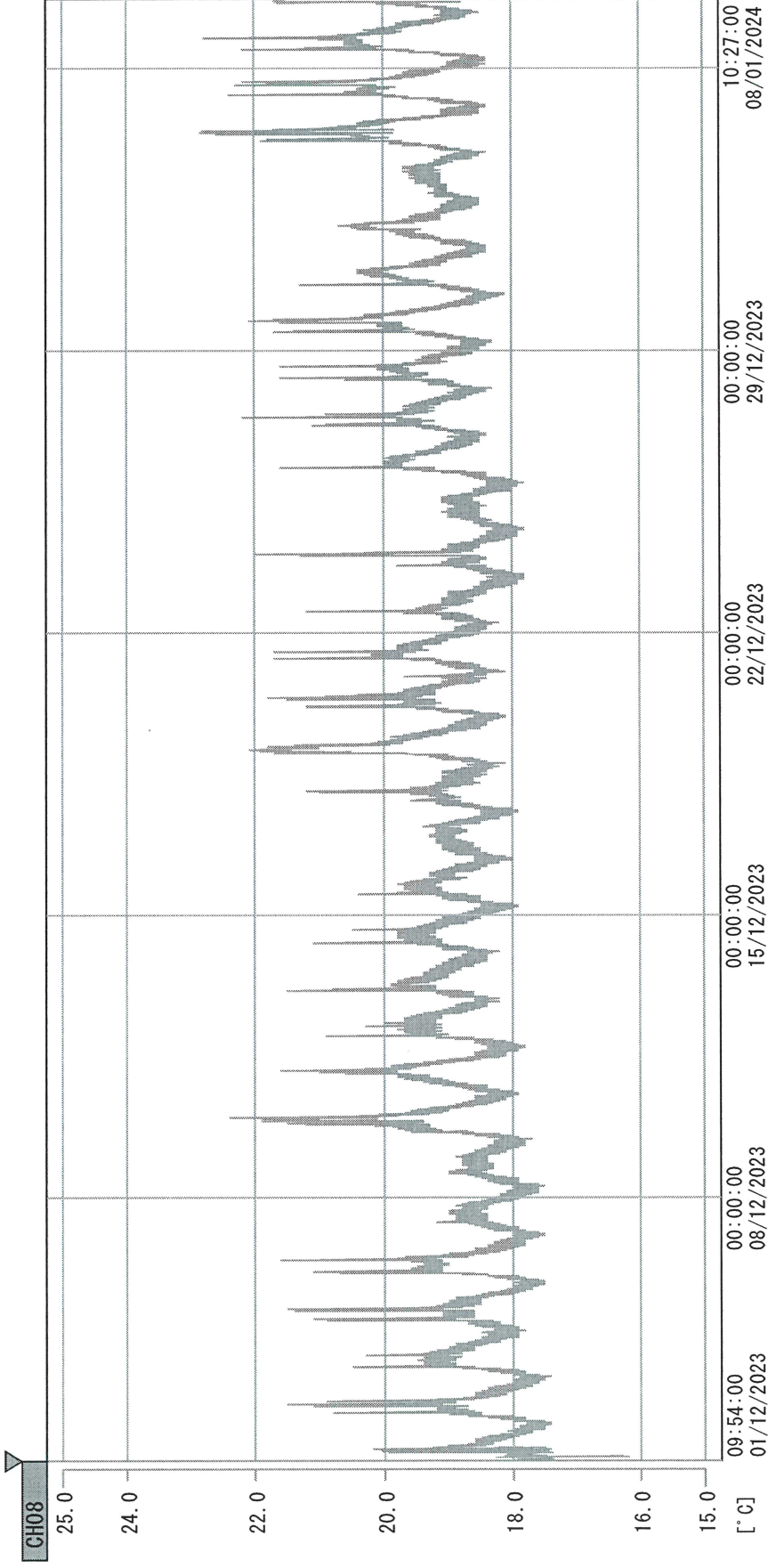
PHRCR2 (B2)

Date (DD/MMM/YYYY)	Time (24hr)	Temperature (°C)			Signature (Initial)	Comments
		Now	Max	Min		
01 / DEC / 2023	1042	19.0	19.5	18.3	HSC	
02 / DEC / 2023	0942	18.5	19.4	17.8	HSC	
03 / DEC / 2023						Sunday
04 / DEC / 2023	0938	18.8	18.8	17.9	HSC	
05 / DEC / 2023	1022	19.1	20.1	18.2	HSC	
06 / DEC / 2023	0932	19.3	20.1	18.2	KLH	
07 / DEC / 2023	1332	18.5	19.6	17.9	HSC	
08 / DEC / 2023	1023	18.8	18.9	17.7	HSC	
09 / DEC / 2023	0923	18.3	19.2	17.7	STW	
10 / DEC / 2023						Sunday
11 / DEC / 2023	1004	19.5	19.5	17.9	STW	
12 / DEC / 2023	1556	19.0	21.0	18.8	HSC	
13 / DEC / 2023	1415	18.9	19.2	18.2	HSC	
14 / DEC / 2023	0941	19.5	19.5	18.7	HSC	
15 / DEC / 2023	1421	19.9	20.1	18.9	HSC	
16 / DEC / 2023	1031	19.8	20.5	18.8	HSC	
17 / DEC / 2023						Sunday
18 / DEC / 2023	1001	19.1	20.6	18.8	HSC	
19 / DEC / 2023	0952	19.6	20.1	18.3	KLH	
20 / DEC / 2023	0948	18.6	20.3	18.1	HSC	
21 / DEC / 2023	0935	18.7	20.2	17.7	HSC	
22 / DEC / 2023	0939	18.9	19.6	18.3	HSC	
23 / DEC / 2023	0842	18.3	19.2	17.8	STW	
24 / DEC / 2023						Sunday
25 / DEC / 2023	1121	18.3	19.4	17.5	KLH	
26 / DEC / 2023	0957	17.8	19.2	17.7	HSC	
27 / DEC / 2023	0917	18.2	19.0	17.5	HSC	
28 / DEC / 2023	1601	19.0	19.0	18.1	HSC	
29 / DEC / 2023	1011	19.0	19.3	18.1	HSC	
30 / DEC / 2023	1400	19.3	19.3	18.2	HSC	
31 / DEC / 2023						Sunday

 Pharmacist: 
 Page 1 / 30 DEC 2023
 (From JUN/2012 v0.4)

0000_231201095333.dm

DISP_GRP_1



01/12/2023 09:54:00

1. OPT	-24.2 [°C]	2. Multi	-20.2 [°C]	3. B1CT	21.1 [°C]	4. SC-140	4.7 [°C]
22110907	5.0 [°C]	6. 201SAR	23.7 [°C]	22100813	4.2 [°C]	8. B2CT	19.1 [°C]
22070604	4.6 [°C]	10. KCC-3	23.0 [°C]	TAG01	-75.0 [°C]	TAG01	-75.0 [°C]

J. G. Skell
08 JAN 2024