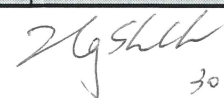


Temperature Record
Investigational Product Stored Under Refrigerated Condition (2 to 8 °C)
CH05

Model: MPR-1412 (22110907) TP213030

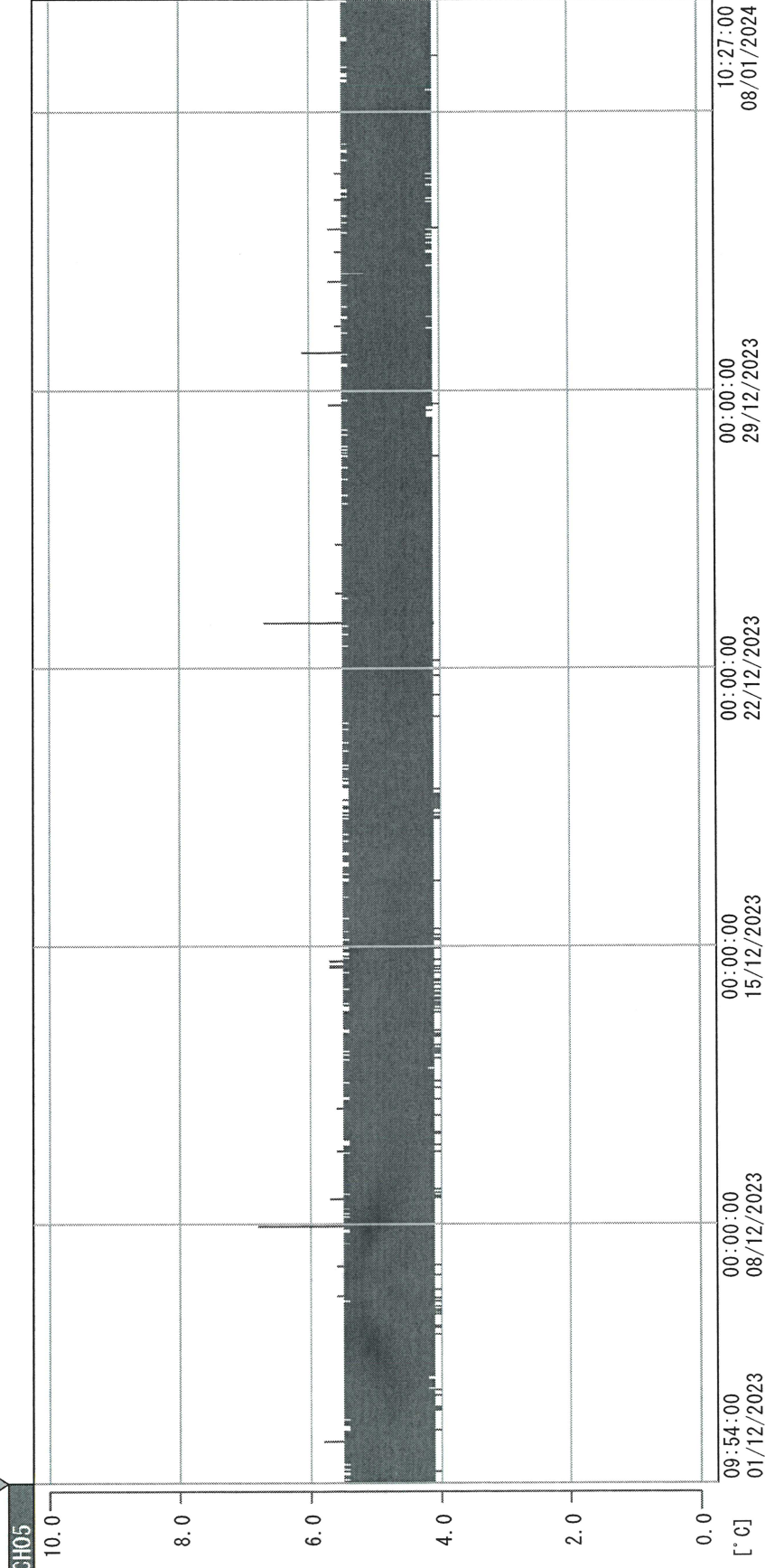
Date (DD/MMM/YYYY)	Time (24hr)	Temperature (°C)			Signature (Initial)	Comments
		Now	Max	Min		
01 / DEC / 2023	0908	4.2	4.4	4.0	HSC	
02 / DEC / 2023	0901	4.1	4.5	3.9	HSC	
03 / DEC / 2023						Sunday
04 / DEC / 2023	0910	4.2	4.3	4.0	HSC	
05 / DEC / 2023	0911	4.2	4.5	4.1	HSC	
06 / DEC / 2023	0820	4.3	4.4	4.1	KLH	
07 / DEC / 2023	0940	4.3	4.4	4.1	HSC	
08 / DEC / 2023	0904	4.2	4.4	4.0	HSC	
09 / DEC / 2023	0917	4.3	4.4	4.1	STW	
10 / DEC / 2023						Sunday
11 / DEC / 2023	0939	4.2	4.4	4.1	KLH	
12 / DEC / 2023	0934	4.2	4.5	4.2	KLH	
13 / DEC / 2023	0902	4.3	4.5	4.1	HSC	
14 / DEC / 2023	0901	4.3	4.4	4.1	HSC	
15 / DEC / 2023	0902	4.3	4.4	4.0	HSC	
16 / DEC / 2023	0908	4.3	4.5	4.0	KLH	
17 / DEC / 2023						Sunday
18 / DEC / 2023	0820	4.3	4.4	4.1	KLH	
19 / DEC / 2023	0858	4.2	4.4	4.1	HSC	
20 / DEC / 2023	0852	4.1	4.4	4.1	HSC	
21 / DEC / 2023	0913	4.1	4.5	4.1	HSC	
22 / DEC / 2023	0859	4.2	4.5	4.1	HSC	
23 / DEC / 2023	0826	4.1	4.5	4.0	STW	
24 / DEC / 2023						Sunday
25 / DEC / 2023	0838	4.1	4.4	4.1	KLH	
26 / DEC / 2023	0908	4.1	4.4	4.0	HSC	
27 / DEC / 2023	0902	4.2	4.4	4.0	HSC	
28 / DEC / 2023	0922	4.2	4.3	4.1	HSC	
29 / DEC / 2023	0905	4.1	4.4	3.9	HSC	
30 / DEC / 2023	0805	4.2	4.4	4.0	HSC	
31 / DEC / 2023						Sunday

Pharmacist:


 30 DEC 2023

0000_231201095333.dm

DISP_GRP_1



01/12/2023 09:54:00

1. OPT	-24.2 [°C]	2. Multi	-20.2 [°C]	3. B1CT	21.1 [°C]	4. SC-140	4.7 [°C]
22110907	5.0 [°C]	6. 201SAR	23.7 [°C]	22100813	4.2 [°C]	8. B2CT	19.1 [°C]
22070604	4.6 [°C]	10. KCC-3	23.0 [°C]	TAG01	-75.0 [°C]	TAG01	-75.0 [°C]

Zgshlha
08 JAN 2024