

Temperature Record
Investigational Product Stored at Room Temperature (15 to 25 °C)


Model: TP213039

PHRCR2 (B2)

CH08

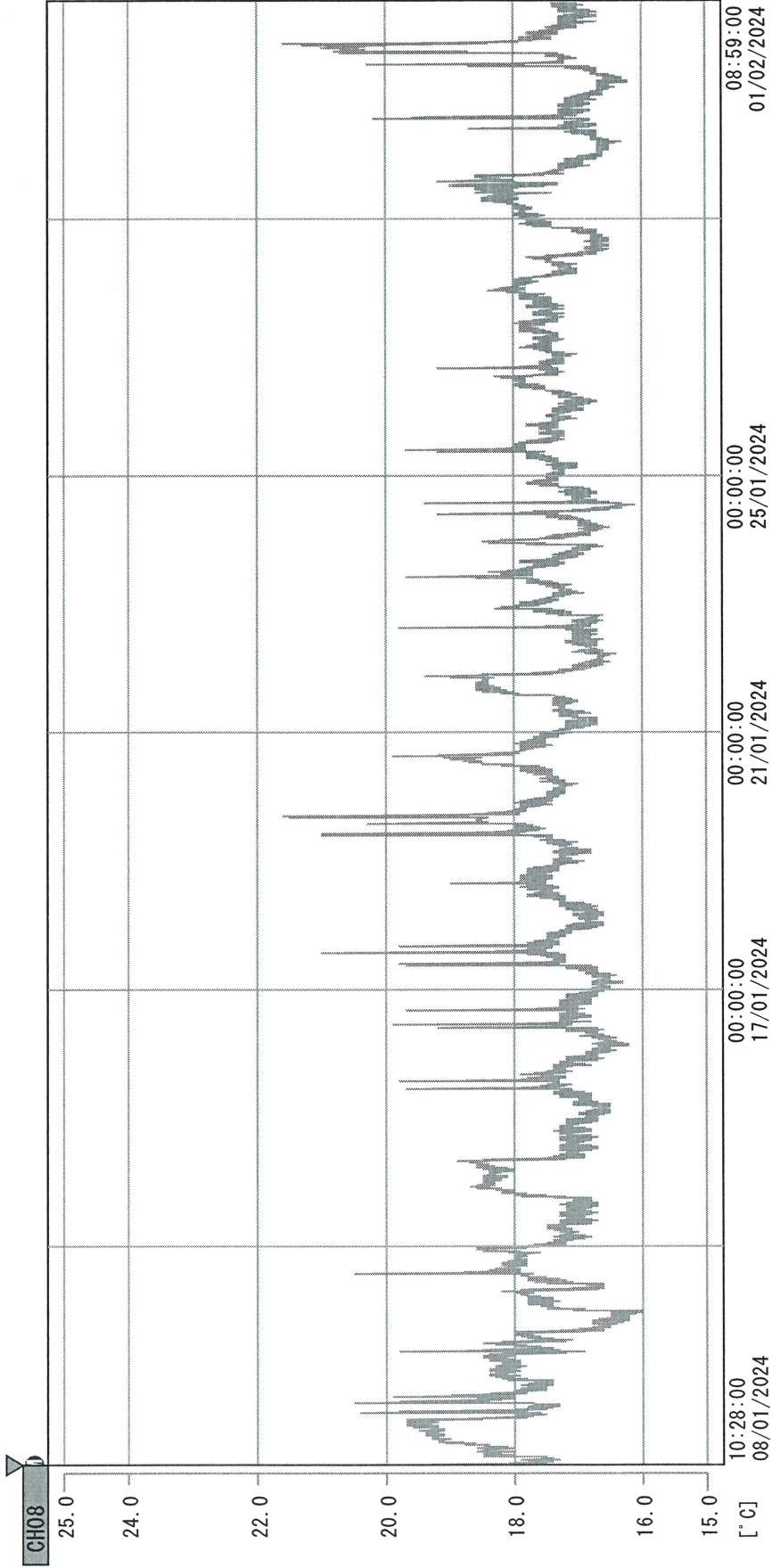
Date (DD/MM/YY)	Time (24hr)	Temperature (°C)			Signature (Initial)	Comments
		Now	Max	Min		
01 / JAN / 2024						Holiday
02 / JAN / 2024	0926	18.5	20.0	17.6	HSC	
03 / JAN / 2024	1030	18.7	18.7	17.9	HSC	
04 / JAN / 2024	0933	17.6	19.3	17.0	HSC	
05 / JAN / 2024	1613	18.2	18.7	17.2	SW	
06 / JAN / 2024						Saturday
07 / JAN / 2024						Sunday
08 / JAN / 2024	1018	19.2	19.2	17.2	HSC	
09 / JAN / 2024	1359	18.6	20.8	17.8	SW	
10 / JAN / 2024	1040	19.6	20.1	18.4	HSC	
11 / JAN / 2024	0926	18.6	19.8	18.2	HSC	
12 / JAN / 2024	1410	18.9	18.9	17.2	HSC	
13 / JAN / 2024						Saturday
14 / JAN / 2024						Sunday
15 / JAN / 2024	1110	18.4	19.3	17.5	HSC	
16 / JAN / 2024	0949	18.3 17.9	19.1	17.9	KLH	
17 / JAN / 2024	0928	18.1	19.0	17.4	HSC	
18 / JAN / 2024	1535	18.7	19.4	17.7	HSC	
19 / JAN / 2024	0952	18.7	18.9	18.0	SW	
20 / JAN / 2024						Saturday
21 / JAN / 2024						Sunday
22 / JAN / 2024	1512	18.6	20.9	17.5	HSC	
23 / JAN / 2024	1014	18.5	19.1	17.8	KLH	
24 / JAN / 2024	0956	18.0	19.0	17.2	HSC	
25 / JAN / 2024	0941	18.6	18.8	17.1	SW	
26 / JAN / 2024	1625	18.3	18.9	17.5	HSC	
27 / JAN / 2024						Saturday
28 / JAN / 2024						Sunday
29 / JAN / 2024	0942	18.5	18.8	17.5	HSC	
30 / JAN / 2024	0945	18.0	19.2	17.4	HSC	
31 / JAN / 2024	0938	18.4	18.5	17.9	HSC	

Pharmacist:


 01 FEB 2024

0000_240108102852.dtm

DISP_GRP_1



08/01/2024 10:28:00

1. OPT	-23.2 [°C]	2. Multi	-25.9 [°C]	3. B1CT	21.0 [°C]	4. SC-140	3.5 [°C]
22110907	5.3 [°C]	6. 201SAR	3.7 [°C]	22100813	4.5 [°C]	8. B2CT	19.2 [°C]
22070604	6.1 [°C]	10. KCC-3	21.4 [°C]				

Zgshu
01/FEB2024