


Temperature Record

Investigational Product Stored Under Refrigerated Condition (2 to 8 °C)

CH09

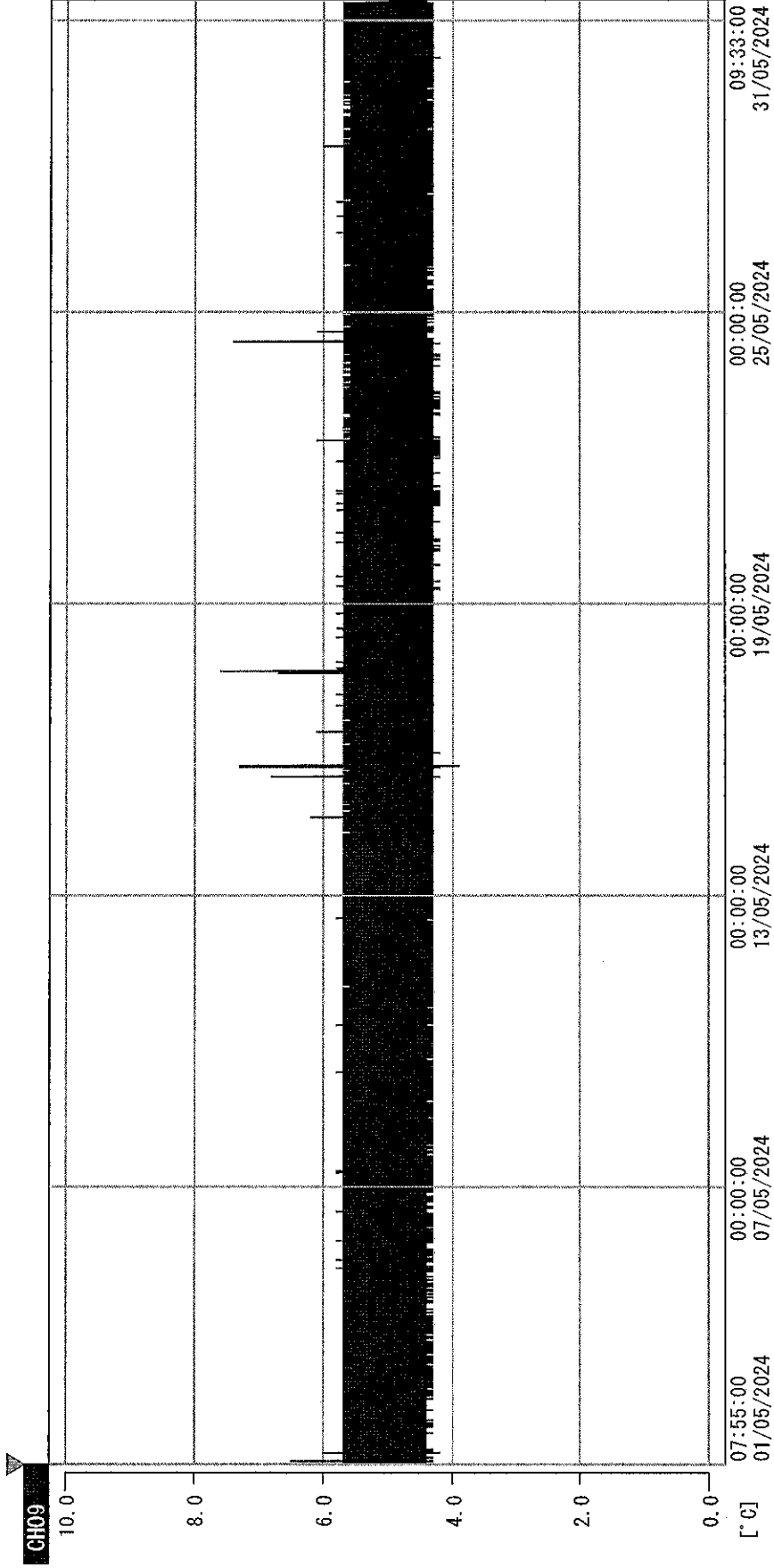
B2 Model: MPR-1412 (22070604) TP215288

Date (DD/MMM/YYYY)	Time (24hr)	Temperature (°C)			Signature (Initial)	Comments
		Now	Max	Min		
01 / MAY / 2024	0956	5.0	5.1	4.7	KLH	
02 / MAY / 2024	1048	4.8	5.2	4.3	JJL	
03 / MAY / 2024	1102	4.6	5.1	4.4	JJL	
04 / MAY / 2024						Saturday
05 / MAY / 2024						Sunday
06 / MAY / 2024	1045	5.0	5.1	4.8	JJL	
07 / MAY / 2024	1100	5.1	5.3	4.9	KLH	
08 / MAY / 2024	1535	5.0	5.2	5.0	JJL	
09 / MAY / 2024	0924	5.1	5.4	5.0	JFW	
10 / MAY / 2024	0855	5.5	5.5	4.7	JJL	
11 / MAY / 2024						Saturday
12 / MAY / 2024						Sunday
13 / MAY / 2024	1033	5.2	5.7	4.9	JJL	
14 / MAY / 2024	1048	4.9	5.5	4.8	JJL	
15 / MAY / 2024	1552	5.0	5.2	4.8	JJL	
16 / MAY / 2024	0937	5.0	5.3	4.8	JJL	
17 / MAY / 2024	1444	6.0	6.1	5.0	KLH	
18 / MAY / 2024						Saturday
19 / MAY / 2024						Sunday
20 / MAY / 2024	1054	5.3	6.1	5.1	KLH	
21 / MAY / 2024	0959	5.5	6.0	5.1	JJL	
22 / MAY / 2024	0927	5.1	5.6	5.0	JJL	
23 / MAY / 2024	1445	5.1	5.2	5.0	JJL	
24 / MAY / 2024	1022	5.1	5.3	5.0	JJL	
25 / MAY / 2024						Saturday
26 / MAY / 2024						Sunday
27 / MAY / 2024	1025	5.2	5.4	4.8	JJL	
28 / MAY / 2024	0935	5.0	5.4	4.9	KLH	
29 / MAY / 2024	0948	5.1	5.2	4.9	JJL	
30 / MAY / 2024	0941	5.0	5.5	4.9	JJL	
31 / MAY / 2024	0917	5.1	5.6	5.0	KLH	

Pharmacist: 
 31 MAY 2024
 Page 1
 (From JUN/2012 V0.4)

0000_240501075446.dfm

DISP_GRP_1



01/05/2024 07:55:00

1. OPJ	-21.5 [°C]	2. Multi	-24.4 [°C]	3. BICI	21.1 [°C]	4. SC-140	5.2 [°C]
22110907	5.0 [°C]	6. 20/SAR	6.0 [°C]	22100813	21.0 [°C]	8. B2C1	20.5 [°C]
22070604	4.5 [°C]	10. KCC-3	5.0 [°C]				

Don J. H.

31 MAY 2024