

Temperature Record

Investigational Product Stored Under Refrigerated Condition (2 to 8 °C)

CH04

Model: SC-140E-CT (G1404001) TP215255

Date (DD/MMM/YYYY)	Time (24hr)	Temperature (°C)			Signature (Initial)	Comments
		Now	Max	Min		
01 / MAY / 2024	0748	4.8	5.6	4.7	JJL	
02 / MAY / 2024	0849	4.8	5.4	4.7	KLH	
03 / MAY / 2024	0758	4.8	5.4	4.7	JJL	
04 / MAY / 2024						Saturday
05 / MAY / 2024						Sunday
06 / MAY / 2024	0750	4.8	5.6	4.6	JJL	
07 / MAY / 2024	0857	4.8	5.5	4.7	KLH	
08 / MAY / 2024	0753	4.8	5.5	4.7	JJL	
09 / MAY / 2024	0845	4.8	5.5	4.7	KLH	
10 / MAY / 2024	0753	4.8	5.4	4.8	JJL	
11 / MAY / 2024						Saturday
12 / MAY / 2024						Sunday
13 / MAY / 2024	0749	4.8	5.6	4.7	JJL	
14 / MAY / 2024	0752	4.9	5.4	4.9	JJL	
15 / MAY / 2024	0752	5.0	5.5	4.9	JJL	
16 / MAY / 2024	0752	4.8	5.5	4.8	JJL	
17 / MAY / 2024	0915	5.0	5.6	4.8	KLH	
18 / MAY / 2024						Saturday
19 / MAY / 2024						Sunday
20 / MAY / 2024	0844	5.0	5.4	4.8	KLH	
21 / MAY / 2024	0841	5.0	5.1	5.0	KLH	
22 / MAY / 2024	0750	4.8	5.4	4.7	JJL	
23 / MAY / 2024	0753	5.0	5.4	4.7	JJL	
24 / MAY / 2024	0753	4.9	5.5	4.7	JJL	
25 / MAY / 2024						Saturday
26 / MAY / 2024						Sunday
27 / MAY / 2024	0752	4.8	5.6	4.7	JJL	
28 / MAY / 2024	0757	4.8	5.3	4.7	JJL	
29 / MAY / 2024	0750	4.9	5.2	4.8	JJL	
30 / MAY / 2024	0757	4.9	5.4	4.9	JJL	
31 / MAY / 2024	0838	4.7	5.2	4.6	KLH	

 Pharmacist: 

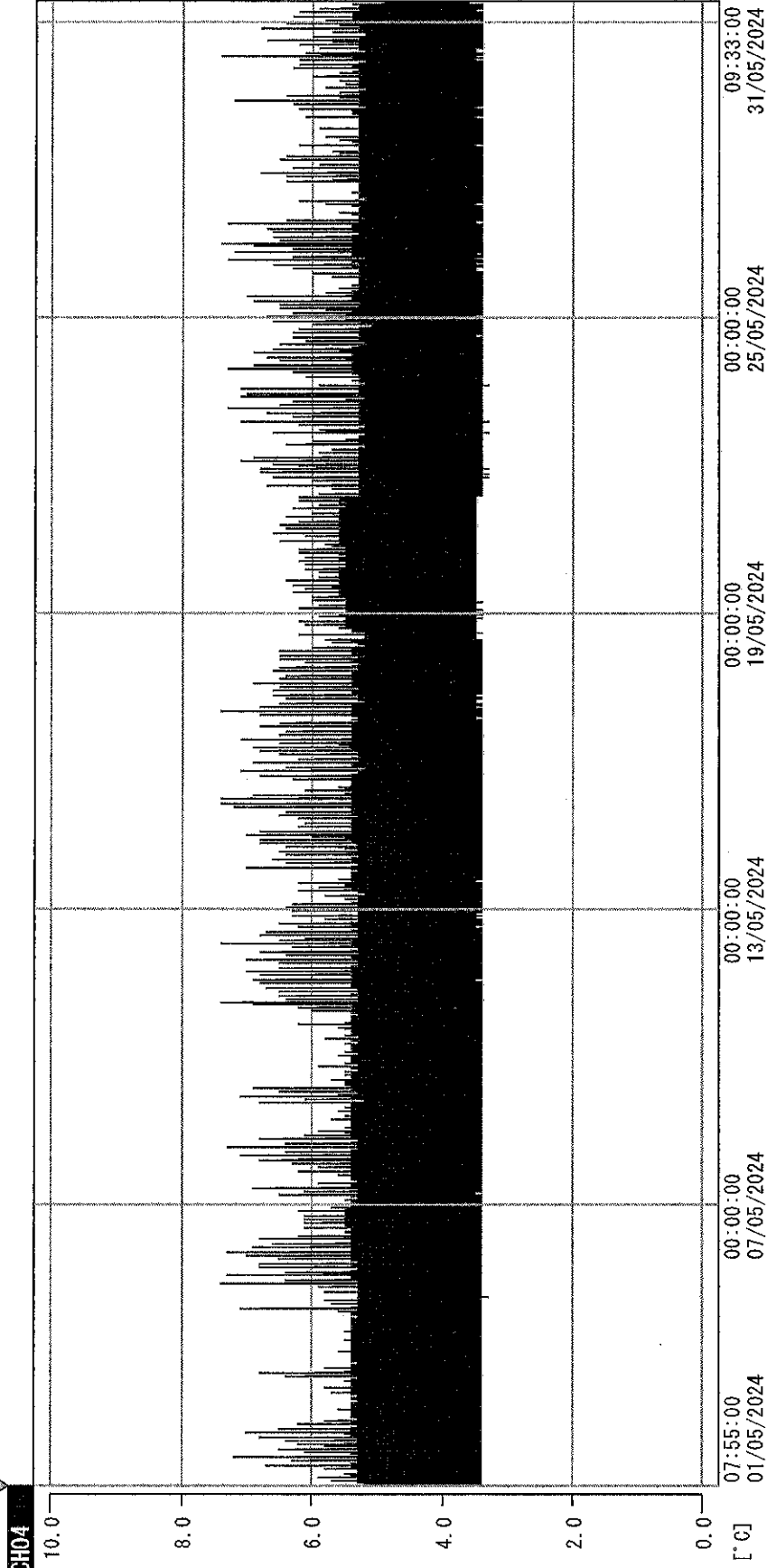
31 MAY 2024

Page 1

(From JUN/2012 v0.4)

0000_240501075446.dtm

DISP_GRP_1



01/05/2024 07:55:00

1. OPT	-21.5 [°C]	2. Multi	-24.4 [°C]	3. BIC1	21.1 [°C]	4. SC-140	5.2 [°C]
22110307	5.0 [°C]	6. 201SAR	6.0 [°C]	22100813	21.0 [°C]	8. B2C1	20.5 [°C]
22070604	4.5 [°C]	10. KCC-3	5.0 [°C]				

Don't see anything

31 MAY 2024