

Temperature Record
Investigational Product Stored at Room Temperature (15 to 25 °C)

Model: TP215281

PHRCR1 (B1)

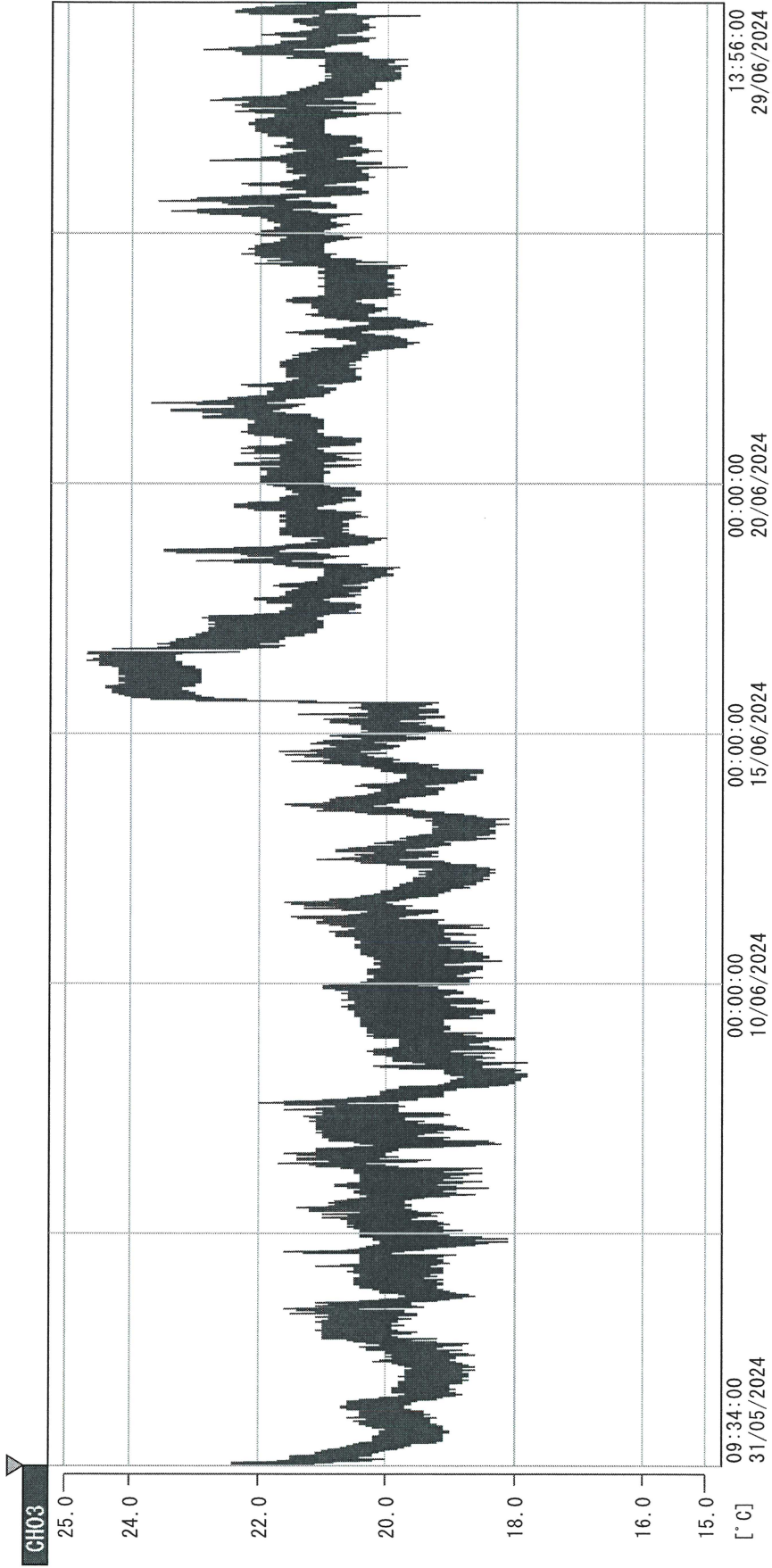
CH03

Date (DD/MMM/YYYY)	Time (24hr)	Temperature (°C)			Signature (Initial)	Comments
		Now	Max	Min		
01 / JUN / 2024						Saturday
02 / JUN / 2024						Sunday
03 / JUN / 2024	0901	19.3	21.1	18.1	KLH	
04 / JUN / 2024	0830	19.2	20.3	18.3	JYW	
05 / JUN / 2024	0750	19.4	20.3	18.8	JJL	
06 / JUN / 2024	0747	19.0	20.0	18.5	JJL	
07 / JUN / 2024	1018	19.6	20.4	18.7	KLH	
08 / JUN / 2024						Saturday
09 / JUN / 2024						Sunday
10 / JUN / 2024						Public Holiday
11 / JUN / 2024	0749	18.8	20.5	17.4	JJL	
12 / JUN / 2024	0755	18.0	20.0	17.8	JJL	
13 / JUN / 2024	0758	18.0	19.8	17.8	JJL	
14 / JUN / 2024	0752	18.7	20.3	18.0	JJL	
15 / JUN / 2024						Saturday
16 / JUN / 2024						Sunday
17 / JUN / 2024	0753	22.8	24.1	19.5	JJL	
18 / JUN / 2024	0750	19.9	22.3	19.9	JJL	
19 / JUN / 2024	0751	20.2	22.7	19.9	JJL	
20 / JUN / 2024	0852	20.3	21.9	20.2	JJL	
21 / JUN / 2024	0746	20.9	21.8	20.3	JJL	
22 / JUN / 2024						Saturday
23 / JUN / 2024						Sunday
24 / JUN / 2024	0857	19.7	23.2	19.2	JYW	
25 / JUN / 2024	0805	20.7	21.2	19.7	JJL	
26 / JUN / 2024	0748	20.2	22.7	20.2	JJL	
27 / JUN / 2024	0800	20.4	22.3	20.1	JJL	
28 / JUN / 2024	0835	20.0	22.1	19.7	JYW	
29 / JUN / 2024						Saturday
30 / JUN / 2024						Sunday

Pharmacist: Jen-Jui Lin

0000_240531093301.dtm

DISP_GRP_1



31/05/2024 09:34:00

1. OPT	-21.1 [°C]	2. Multi	-23.7 [°C]	3. BICT	20.1 [°C]	4. SC-140	3.5 [°C]
22110907	4.6 [°C]	6. 201SAR	5.8 [°C]	22100813	20.9 [°C]	8. B2CT	19.8 [°C]
22070604	4.4 [°C]	10. KGC-3	4.7 [°C]				

Jen-Jui Liu
29 Jun 2024