

**Temperature Record**
**Investigational Product Stored at Room Temperature (15 to 25 °C)**

Model: TP215304

PHRCR2 (B2)

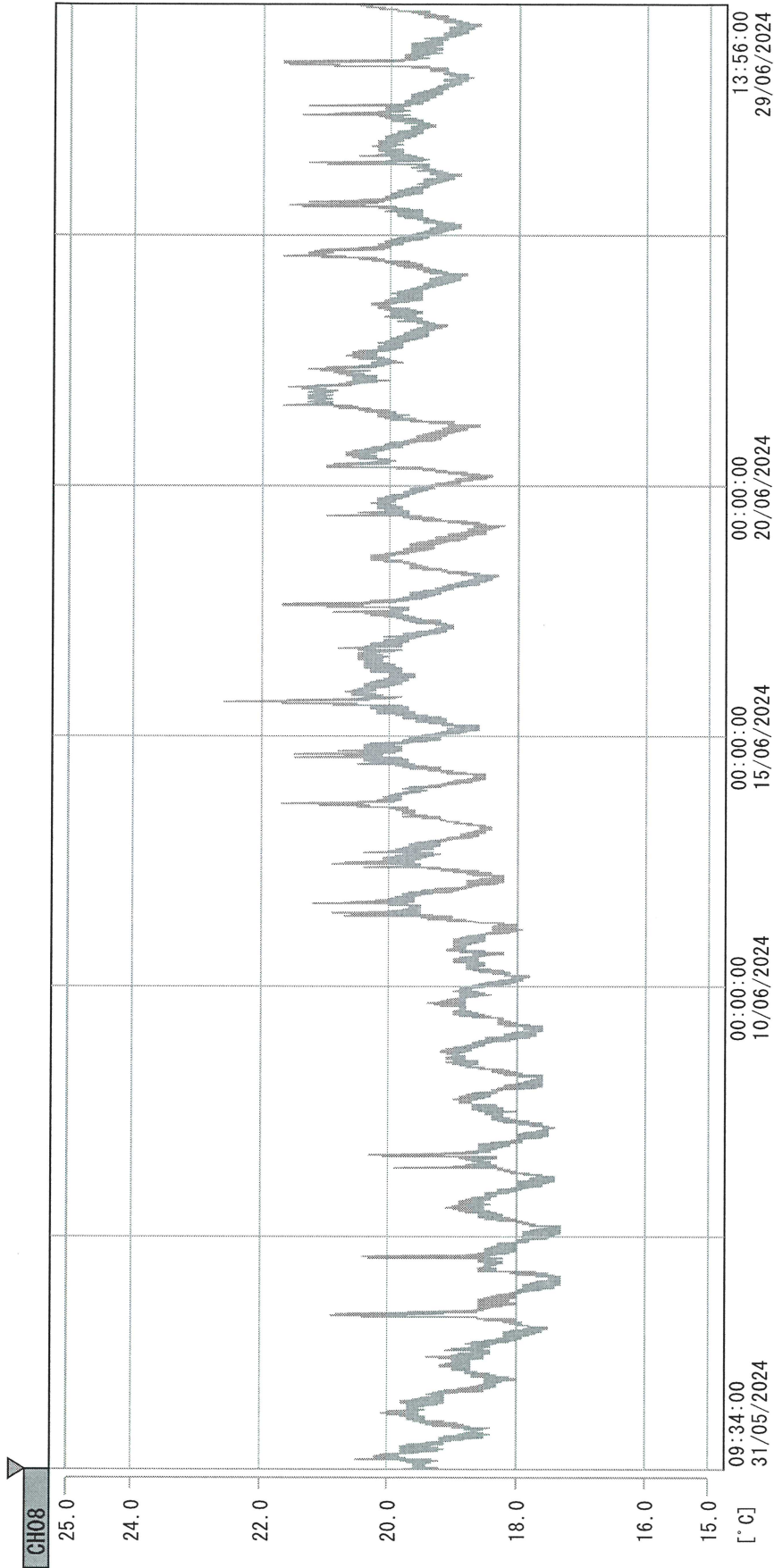
CH08

Date (DD/MMM/YYYY)	Time (24hr)	Temperature (°C)			Signature (Initial)	Comments
		Now	Max	Min		
01 / JUN / 2024						Saturday
02 / JUN / 2024						Sunday
03 / JUN / 2024	0932	19.1	20.7	18.3	KLH	
04 / JUN / 2024	1446	20.0	20.6	18.0	KLH	
05 / JUN / 2024	0905	19.2	20.3	18.5	JJL	
06 / JUN / 2024	0929	19.1	20.4	18.4	JJL	
07 / JUN / 2024	1130	19.2	22.2	18.4	JJL	
08 / JUN / 2024						Saturday
09 / JUN / 2024						Sunday
10 / JUN / 2024						Public Holiday
11 / JUN / 2024	0937	20.0	22.1	18.2	JJL	
12 / JUN / 2024	0930	20.2	21.3	18.9	JJL	
13 / JUN / 2024	0940	20.3	20.9	19.2	JJL	
14 / JUN / 2024	1044	20.7	21.9	19.2	JJL	
15 / JUN / 2024						Saturday
16 / JUN / 2024						Sunday
17 / JUN / 2024	1117	20.5	22.3	19.5	JJL	
18 / JUN / 2024	0959	20.6	21.9	19.1	JJL	
19 / JUN / 2024	1005	20.5	22.2	19.5	JJL	
20 / JUN / 2024	0929	21.8	22.0	19.3	JJL	
21 / JUN / 2024	1444	21.0	21.4	19.5	JW	
22 / JUN / 2024						Saturday
23 / JUN / 2024						Sunday
24 / JUN / 2024	1413	21.7	21.8	19.6	JW	
25 / JUN / 2024	1419	21.5	21.8	19.8	JJL	
26 / JUN / 2024	1045	21.1	21.6	19.7	KLH	
27 / JUN / 2024	0959	21.3	21.3	20.1	JJL	
28 / JUN / 2024	0918	20.1	21.5	19.4	JW	
29 / JUN / 2024						Saturday
30 / JUN / 2024						Sunday

Pharmacist: Jen-Jui LTM

0000\_240531093301.dlm

DISP\_GRP\_1



31/05/2024 09:34:00

1. OPT	-21.1 [°C]	2. Multi	-23.7 [°C]	3. B1GT	20.1 [°C]	4. SC-140	3.5 [°C]
22110907	4.6 [°C]	6. 201SAR	5.8 [°C]	22100813	20.9 [°C]	8. B2CT	19.8 [°C]
22070604	4.4 [°C]	10. KCC-3	4.7 [°C]				

Jan-Jui Liu  
29 Jun 2024