

### Temperature Record

#### Investigational Product Stored Under Refrigerated Condition (2 to 8 °C)

CH09

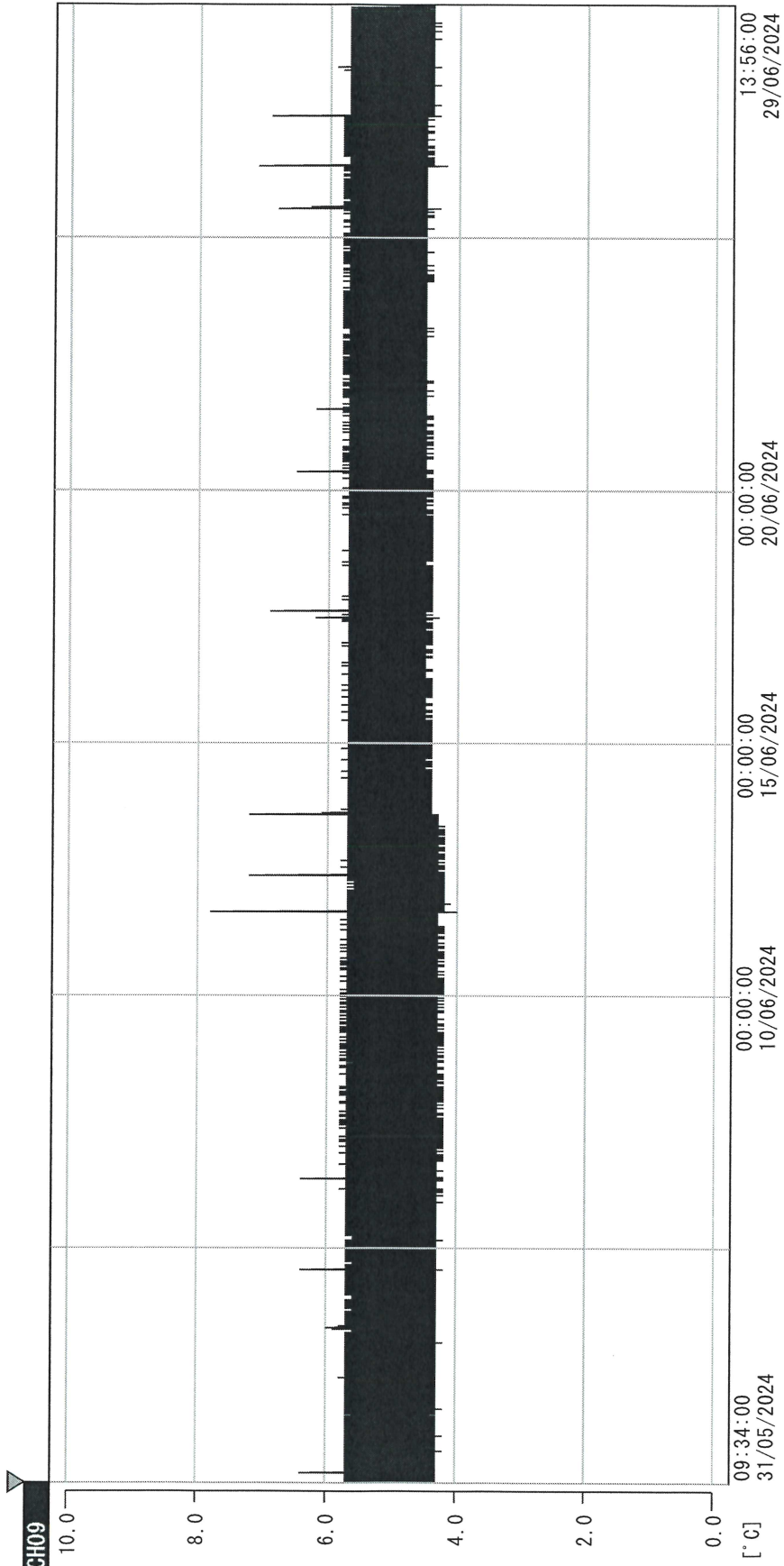
B2 Model: MPR-1412 (22070604) TP215288

Date (DD/MM/YYYY)	Time (24hr)	Temperature (°C)			Signature (Initial)	Comments
		Now	Max	Min		
01 / JUN / 2024						Saturday
02 / JUN / 2024						Sunday
03 / JUN / 2024	0933	5.1	5.4	5.0	KLH	
04 / JUN / 2024	1447	5.1	5.5	4.9	KLH	
05 / JUN / 2024	0906	5.1	5.3	5.0	JJL	
06 / JUN / 2024	0925	5.1	5.3	5.0	JJL	
07 / JUN / 2024	1133	5.1	5.2	5.0	JJL	
08 / JUN / 2024						Saturday
09 / JUN / 2024						Sunday
10 / JUN / 2024						Public Holiday
11 / JUN / 2024	0940	5.6	5.7	5.1	JJL	
12 / JUN / 2024	0929	5.4	5.7	5.3	JJL	
13 / JUN / 2024	0942	5.6	5.8	5.4	JJL	
14 / JUN / 2024	1045	5.1	5.7	5.0	JJL	
15 / JUN / 2024						Saturday
16 / JUN / 2024						Sunday
17 / JUN / 2024	1117	5.3	5.5	5.1	JJL	
18 / JUN / 2024	0957	5.3	5.5	5.1	JJL	
19 / JUN / 2024	1006	5.1	5.6	4.9	JJL	
20 / JUN / 2024	0927	5.3	5.3	4.9	JJL	
21 / JUN / 2024	1402	7.4	7.5	4.9	SPW	
22 / JUN / 2024						Saturday
23 / JUN / 2024						Sunday
24 / JUN / 2024	1413	7.2	7.5	7.2	SPW	
25 / JUN / 2024	1420	4.9	5.5	4.8	JJL	
26 / JUN / 2024	1046	5.0	5.5	4.8	KLH	
27 / JUN / 2024	0958	5.0	5.3	4.9	JJL	
28 / JUN / 2024	0919	7.1	7.2	4.9	SPW	
29 / JUN / 2024						Saturday
30 / JUN / 2024						Sunday

Pharmacist: Jen-Jui Liu

0000\_240531093301.dlm

DISP\_GRP\_1



31/05/2024 09:34:00

1. OPT	-21.1 [°C]	2. Multi	-23.7 [°C]	3. B1GT	20.1 [°C]	4. SC-140	3.5 [°C]
22110907	4.6 [°C]	6. 201SAR	5.8 [°C]	22100813	20.9 [°C]	8. B2GT	19.8 [°C]
22070604	4.4 [°C]	10. KCC-3	4.7 [°C]				

Ter-Jui Liu  
29 Jun 2024