

### Temperature Record

#### Investigational Product Stored Under Refrigerated Condition (2 to 8 °C)

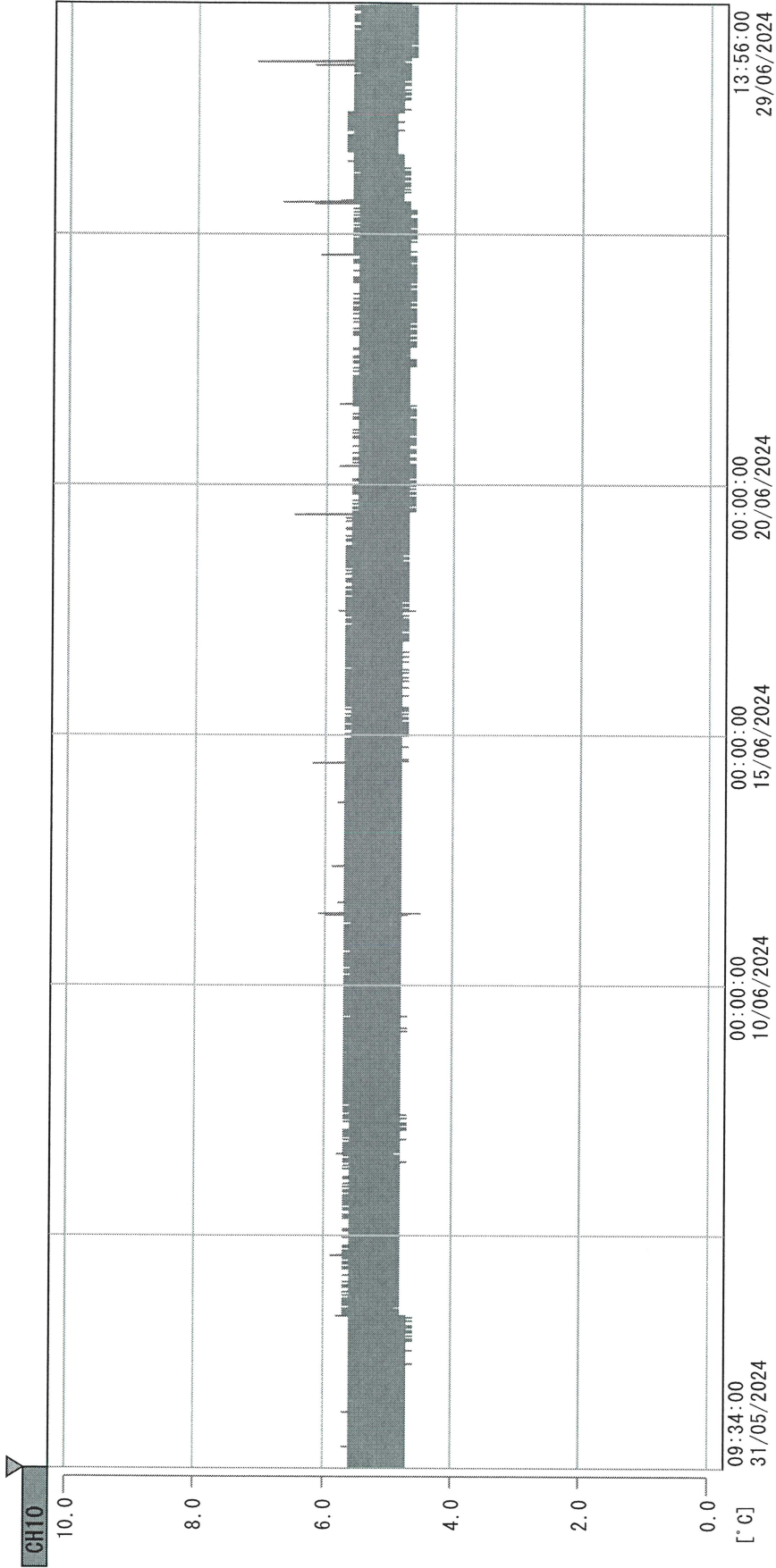
CH10

B2 Model: MPR-1412 (22100813) TP215279

Date (DD/MMM/YYYY)	Time (24hr)	Temperature (°C)			Signature (Initial)	Comments
		Now	Max	Min		
01 / JUN / 2024						Saturday
02 / JUN / 2024						Sunday
03 / JUN / 2024	0934	5.2	5.5	5.1	KLH	
04 / JUN / 2024	1448	5.2	5.4	5.1	KLH	
05 / JUN / 2024	0906	5.2	5.5	5.1	JJL	
06 / JUN / 2024	0926	5.2	5.4	5.1	JJL	
07 / JUN / 2024	1135	5.2	5.4	5.1	JJL	
08 / JUN / 2024						Saturday
09 / JUN / 2024						Sunday
10 / JUN / 2024						Public Holiday
11 / JUN / 2024	0940	5.0	5.5	5.1	JJL	
12 / JUN / 2024	0931	5.3	5.5	5.1	JJL	
13 / JUN / 2024	0941	5.0	5.5	5.0	JJL	
14 / JUN / 2024	1045	5.3	5.4	5.0	JJL	
15 / JUN / 2024						Saturday
16 / JUN / 2024						Sunday
17 / JUN / 2024	1118	5.3	5.5	5.0	JJL	
18 / JUN / 2024	0958	5.3	5.5	5.0	JJL	
19 / JUN / 2024	1009	5.3	5.5	5.1	JJL	
20 / JUN / 2024	0930	5.4	5.6	5.2	JJL	
21 / JUN / 2024	1442	5.3	5.5	5.2	SHW	
22 / JUN / 2024						Saturday
23 / JUN / 2024						Sunday
24 / JUN / 2024	1414	5.2	5.6	5.2	SHW	
25 / JUN / 2024	1420	5.3	5.5	5.1	JJL	
26 / JUN / 2024	1047	5.2	5.7	5.1	KLH	
27 / JUN / 2024	0959	5.1	5.4	5.0	JJL	
28 / JUN / 2024	0920	5.1	5.4	5.1	SHW	
29 / JUN / 2024						Saturday
30 / JUN / 2024						Sunday

Pharmacist: Jen-Jui Liu

0000\_240531093301.dm  
DISP\_GRP\_1



Time	Temperature [°C]	Location
31/05/2024 09:34:00	-21.1	1. OPT
	4.6	2. Multi
	4.4	6. 201SAR
	4.4	10. KCC-3
	-23.7	3. B1CT
	5.8	22100813
	4.7	
	20.1	4. SC-140
	20.9	8. B2CT
	3.5	
	19.8	

Jen-Jui Lin  
29 Jun 2024