

Temperature Record

Investigational Product Stored Under Refrigerated Condition (2 to 8 °C)

CH04

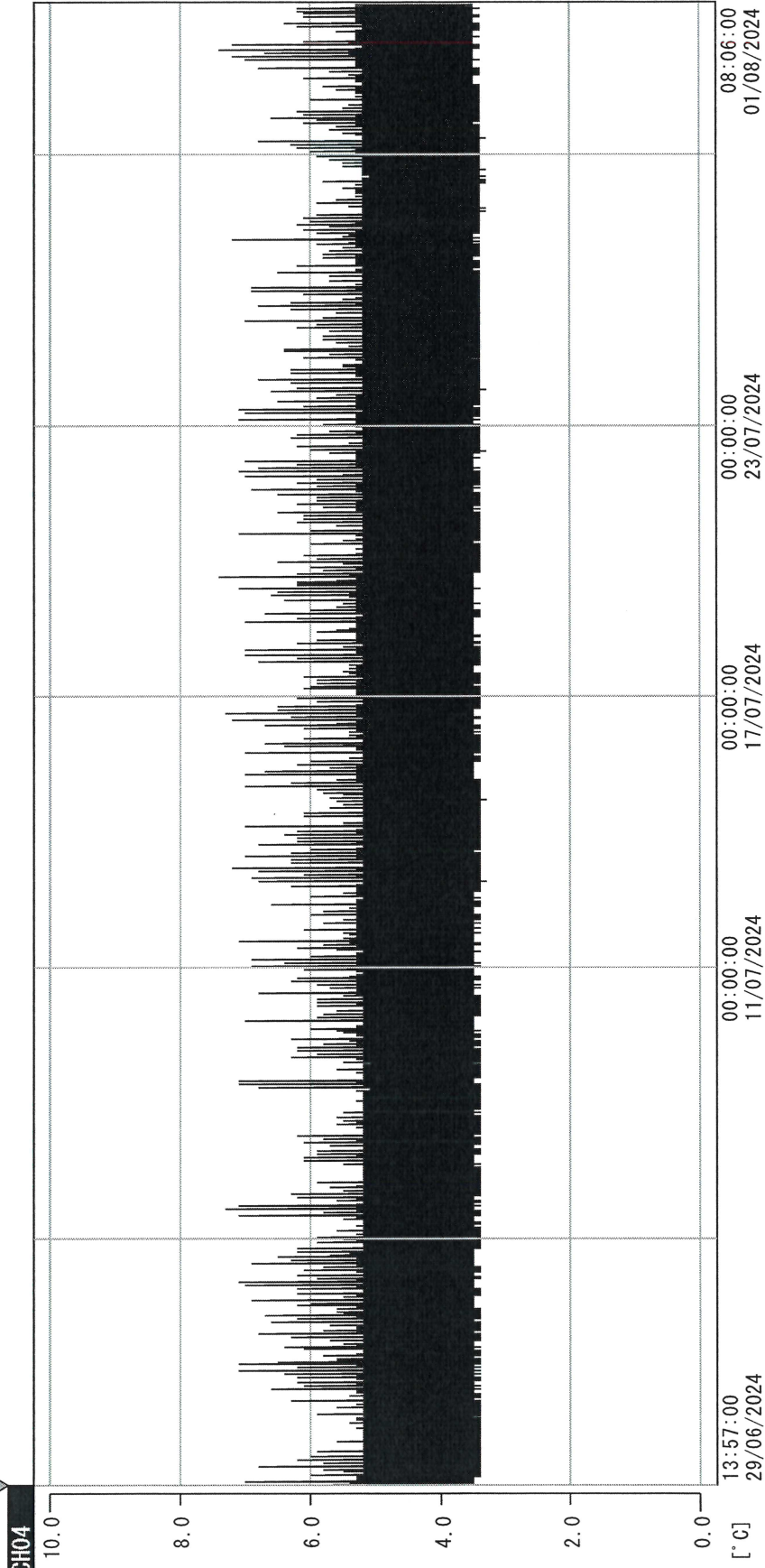
Model: SC-140E-CT (G1404001) TP215255

Date (DD/MMM/YYYY)	Time (24hr)	Temperature (°C)			Signature (Initial)	Comments
		Now	Max	Min		
01 / JUL / 2024	0800	4.8	5.4	4.6	JJL	
02 / JUL / 2024	0754	4.7	5.4	4.7	JJL	
03 / JUL / 2024	0848	4.8	5.4	4.7	JJL	
04 / JUL / 2024	0750	4.7	5.4	4.7	JJL	
05 / JUL / 2024	0755	4.6	5.4	4.6	JJL	
06 / JUL / 2024						Saturday
07 / JUL / 2024						Sunday
08 / JUL / 2024	0752	4.7	5.4	4.6	JJL	
09 / JUL / 2024	0754	5.0	5.4	4.7	JJL	
10 / JUL / 2024	0753	4.8	5.4	4.7	JJL	
11 / JUL / 2024	0923	4.7	7.6	4.6	JW	
12 / JUL / 2024	0803	4.8	5.5	4.7	JJL	
13 / JUL / 2024						Saturday
14 / JUL / 2024						Sunday
15 / JUL / 2024	0754	4.9	5.4	4.7	JJL	
16 / JUL / 2024	0818	4.9	5.5	4.6	KH	
17 / JUL / 2024	0754	4.9	5.6	4.7	JJL	
18 / JUL / 2024	0802	4.9	5.4	4.7	JJL	
19 / JUL / 2024	0754	5.0	5.5	4.7	JJL	
20 / JUL / 2024						Saturday
21 / JUL / 2024						Sunday
22 / JUL / 2024	0840	4.8	7.6	4.7	JW	
23 / JUL / 2024	0816	4.9	7.6	4.7	NW	
24 / JUL / 2024	0802	4.8	5.5	4.7	JJL	
25 / JUL / 2024	0818	4.9	7.4	4.8	JW	
26 / JUL / 2024	0755	5.4	5.4	4.8	JJL	
27 / JUL / 2024						Saturday
28 / JUL / 2024						Sunday
29 / JUL / 2024	0838	4.7	7.4	4.7	JW	
30 / JUL / 2024	0754	4.7	5.1	4.6	JJL	
31 / JUL / 2024	0755	4.9	5.5	4.7	JJL	

Pharmacist: Jen-Jui Lin

0000_240629135621.dlm

DISP_GRP_1



29/06/2024 13:57:00

1. OPT	-21.2 [°C]	2. Multi	-25.8 [°C]	3. BICT	20.9 [°C]	4. SC-140	4.0 [°C]
22110907	5.3 [°C]	6. 201SAR	5.1 [°C]	22100813	22.1 [°C]	8. B2CT	20.4 [°C]
22070604	4.8 [°C]	10. KCC-3	5.4 [°C]				

Jean-Jui Liu
01 Aug 2024