

## Temperature Record

### Investigational Product Stored at Room Temperature (15 to 25 °C)

**CH08**

Model: TP215304

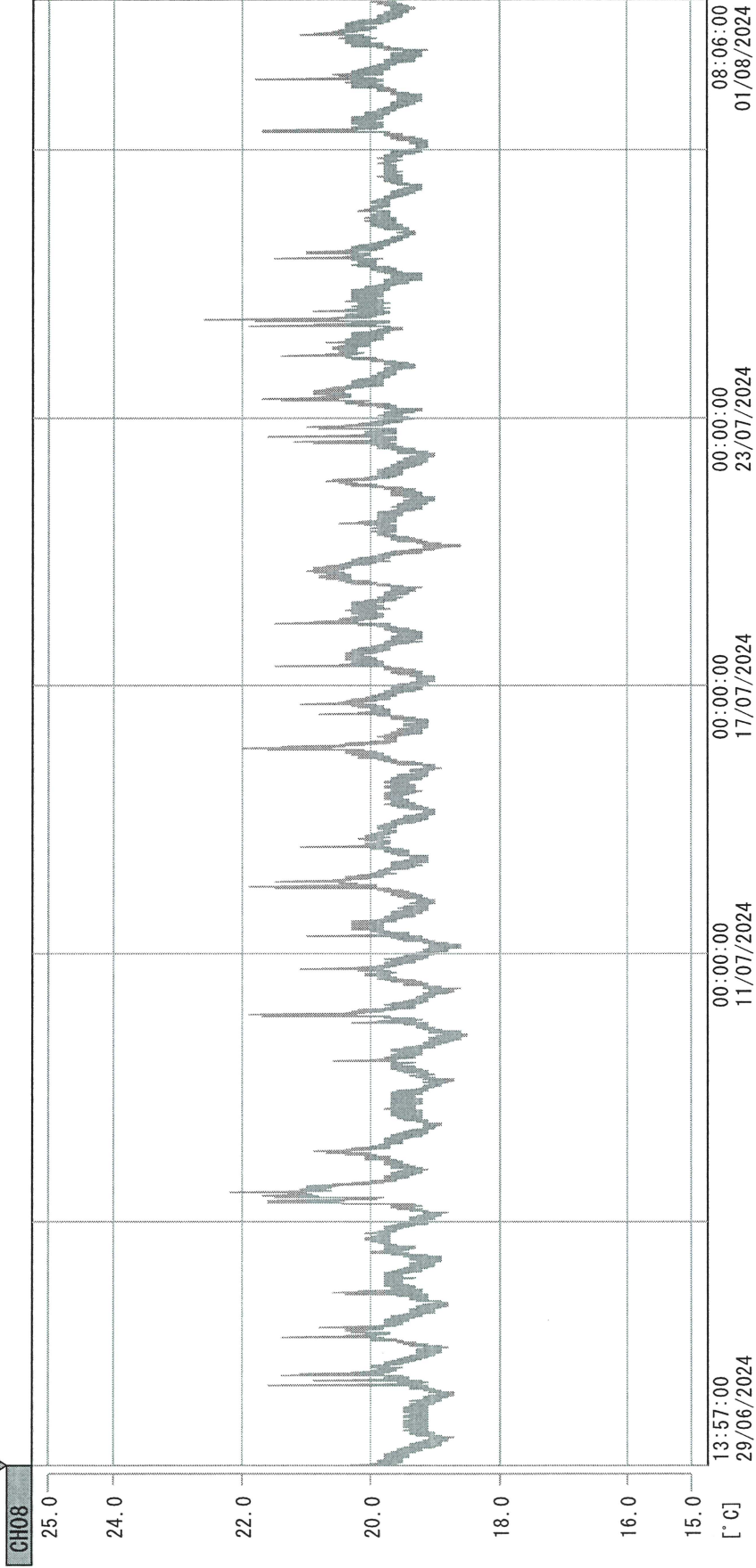
PHRCR2 (B2)

Date (DD/MMM/YYYY)	Time (24hr)	Temperature (°C)			Signature (Initial)	Comments
		Now	Max	Min		
01 / JUL / 2024	0836	20.0	22.0	19.3	JJL	
02 / JUL / 2024	1032	21.3	21.3	19.5	JJL	
03 / JUL / 2024	0942	20.5	21.8	19.5	JJL	
04 / JUL / 2024	1111	20.2	20.6	19.7	JJL	
05 / JUL / 2024	1555	21.9	21.9	19.6	JJL	
06 / JUL / 2024						Saturday
07 / JUL / 2024						Sunday
08 / JUL / 2024	1435	20.4	22.1	19.4	KLH	
09 / JUL / 2024	1118	20.1	20.7	19.2	JJL	
10 / JUL / 2024	1553	20.6	21.6	19.4	JJL	
11 / JUL / 2024	0952	20.5	20.6	19.4	SYW	
12 / JUL / 2024	1136	20.6	21.6	19.4	JJL	
13 / JUL / 2024						Saturday
14 / JUL / 2024						Sunday
15 / JUL / 2024	1408	21.3	21.4	19.5	JJL	
16 / JUL / 2024	0903	20.8	21.7	19.7	JJL	
17 / JUL / 2024	1057	21.1	21.3	19.6	JJL	
18 / JUL / 2024	0936	21.2	21.2	19.8	JJL	
19 / JUL / 2024	1126	21.0	21.3	20.0	JJL	
20 / JUL / 2024						Saturday
21 / JUL / 2024						Sunday
22 / JUL / 2024	1116	20.8	21.4	19.5	KLH	
23 / JUL / 2024	1041	21.8	21.8	19.9	SYW	
24 / JUL / 2024	0940	21.2	21.9	20.0	JJL	
25 / JUL / 2024	0933	20.2	22.2	18.6	SYW	
26 / JUL / 2024	1600	20.9	21.3	19.9	JJL	
27 / JUL / 2024						Saturday
28 / JUL / 2024						Sunday
29 / JUL / 2024	0923	20.5	21.4	19.8	KLH	
30 / JUL / 2024	1401	20.1	20.9	19.8	JJL	
31 / JUL / 2024	1408	20.3	21.0	19.8	JJL	

Pharmacist: Jen-Jui Liu

0000\_240629135621.dm

DISP\_GRP\_1



29/06/2024 13:57:00

1. OPI	-21.2 [°C]	2. Multi	-25.8 [°C]	3. B1GT	20.9 [°C]	4. SC-140	4.0 [°C]
22110907	5.3 [°C]	6. 201SAR	5.1 [°C]	22100813	22.1 [°C]	8. B2CT	20.4 [°C]
22070604	4.8 [°C]	10. KGC-3	5.4 [°C]				

Jan-Jui Liu  
01 Aug 2024