

Temperature Record

Investigational Product Stored Under Refrigerated Condition (2 to 8 °C)

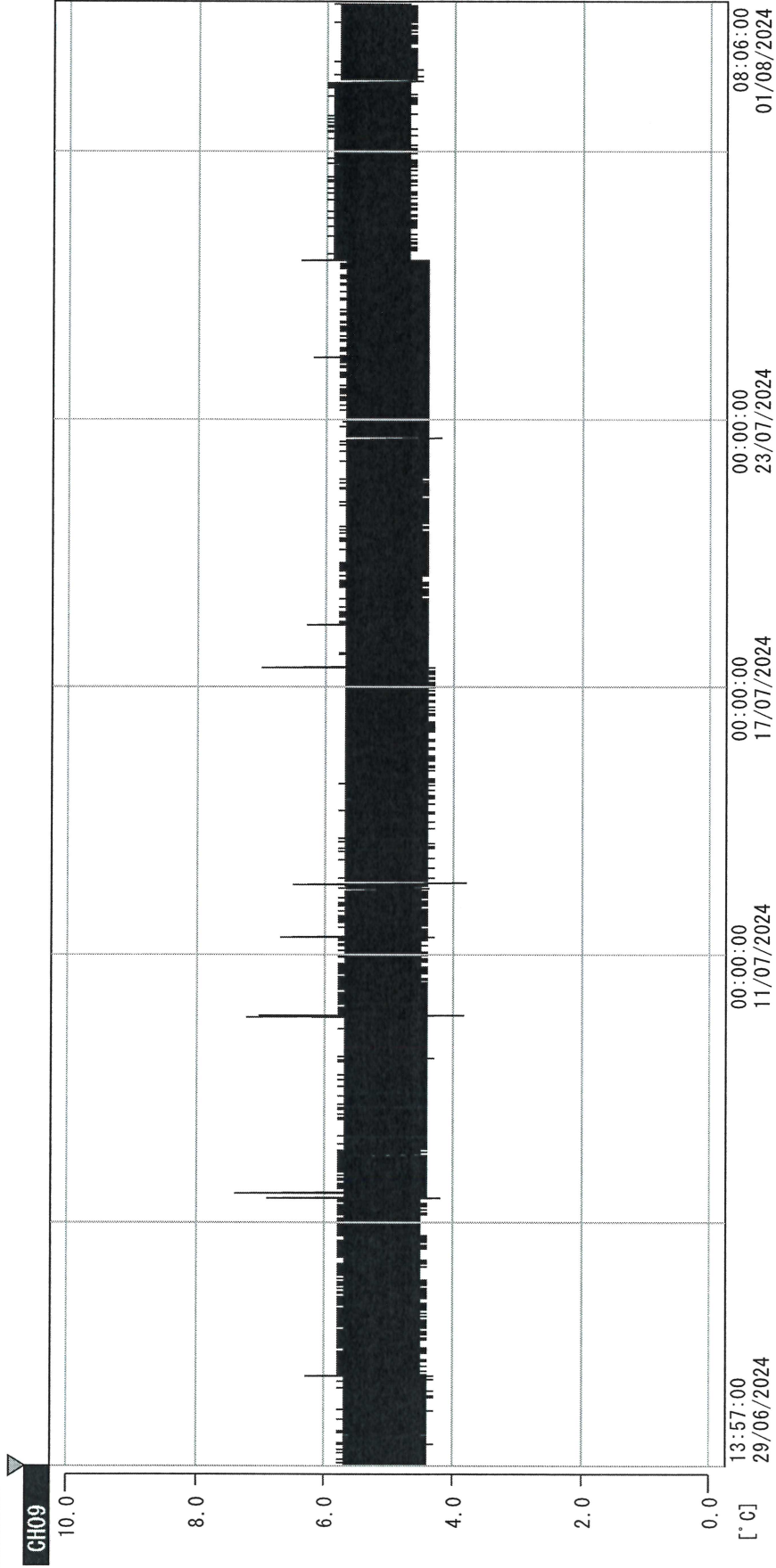
CH09

B2 Model: MPR-1412 (22070604) TP215288

Date (DD/MMM/YYYY)	Time (24hr)	Temperature (°C)			Signature (Initial)	Comments
		Now	Max	Min		
01 / JUL / 2024	0837	5.1	5.3	4.9	JJL	
02 / JUL / 2024	1033	4.7	5.3	4.5	JJL	
03 / JUL / 2024	0943	4.7	5.0	4.6	JJL	
04 / JUL / 2024	1111	4.7	5.0	4.7	JJL	
05 / JUL / 2024	1556	4.8	5.3	4.5	JJL	
06 / JUL / 2024						Saturday
07 / JUL / 2024						Sunday
08 / JUL / 2024	1436	4.8	5.1	4.8	KLH	
09 / JUL / 2024	1119	4.9	5.1	4.8	JJL	
10 / JUL / 2024	1553	5.1	5.1	4.7	JJL	
11 / JUL / 2024	0953	4.6	5.3	4.6	SYW	
12 / JUL / 2024	1137	5.1	5.1	4.7	JJL	
13 / JUL / 2024						Saturday
14 / JUL / 2024						Sunday
15 / JUL / 2024	1408	4.7	5.6	4.0	JJL	
16 / JUL / 2024	0903	5.2	5.7	5.1	JJL	
17 / JUL / 2024	1058	5.5	5.5	4.8	JJL	
18 / JUL / 2024	0939	5.2	5.2	4.8	JJL	
19 / JUL / 2024	1127	5.0	5.2	4.8	JJL	
20 / JUL / 2024						Saturday
21 / JUL / 2024						Sunday
22 / JUL / 2024	1117	5.3	5.3	4.9	KLH	
23 / JUL / 2024	1041	4.9	5.5	4.4	SYW	
24 / JUL / 2024	0940	4.8	5.2	4.7	JJL	
25 / JUL / 2024	0934	5.0	5.1	4.8	SYW	
26 / JUL / 2024	1600	5.2	5.3	4.8	JJL	
27 / JUL / 2024						Saturday
28 / JUL / 2024						Sunday
29 / JUL / 2024	0924	5.2	5.5	5.1	KLH	
30 / JUL / 2024	1401	5.3	5.5	5.1	JJL	
31 / JUL / 2024	1409	5.4	5.4	4.9	JJL	

Pharmacist: Jen-Jui Lin

0000_240629135621.dm
DISP_GRP_1



29/06/2024 13:57:00

1. OPT	-21.2 [°C]	2. Multi	-25.8 [°C]	3. B1CT	20.9 [°C]	4. SC-140	4.0 [°C]
22110907	5.3 [°C]	6. 201SAR	5.1 [°C]	22100813	22.1 [°C]	8. B2CT	20.4 [°C]
22070604	4.8 [°C]	10. KGC-3	5.4 [°C]				

Jen-Jui Lin
01 Aug 2024