

Temperature Record

Investigational Product Stored Under Refrigerated Condition (2 to 8 °C)

B2 Model: MPR-1412 (22100813) TP215279

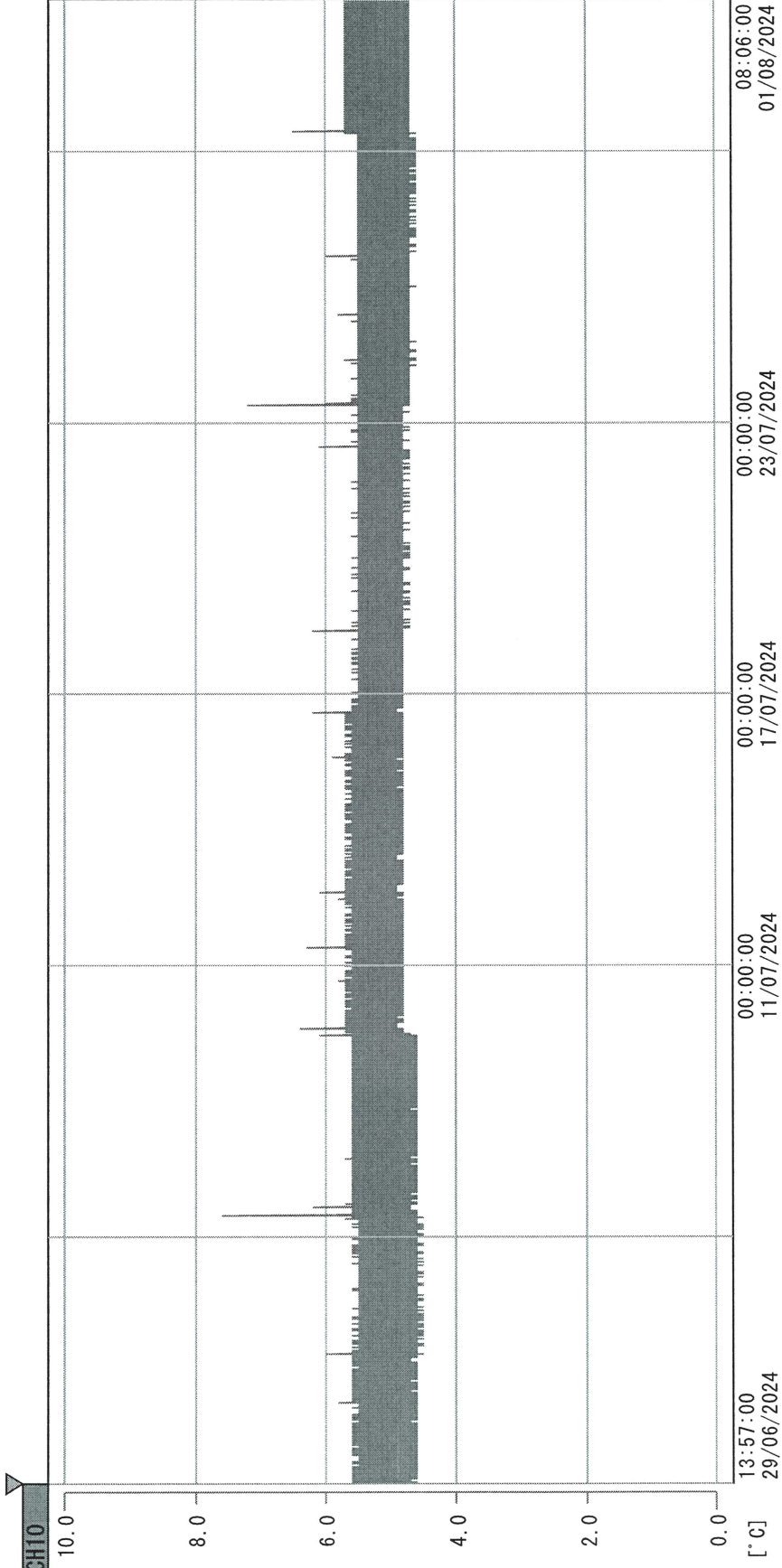
CH10

Date (DD/MMM/YYYY)	Time (24hr)	Temperature (°C)			Signature (Initial)	Comments
		Now	Max	Min		
01 / JUL / 2024	0837	5.3	5.8	5.0	JJL	
02 / JUL / 2024	1033	5.3	5.6	5.2	JJL	
03 / JUL / 2024	0944	5.2	5.5	5.2	JJL	
04 / JUL / 2024	1112	5.3	5.5	5.2	JJL	
05 / JUL / 2024	1556	5.4	6.2	5.3	JJL	
06 / JUL / 2024						Saturday
07 / JUL / 2024						Sunday
08 / JUL / 2024	1437	5.3	5.6	5.2	KLH	
09 / JUL / 2024	1120	5.6	5.6	5.2	JJL	
10 / JUL / 2024	1554	5.3	5.8	5.1	JJL	
11 / JUL / 2024	0954	7.2	7.4	7.1	JW	
12 / JUL / 2024	1137	5.2	5.5	5.1	JJL	
13 / JUL / 2024						Saturday
14 / JUL / 2024						Sunday
15 / JUL / 2024	1409	5.3	5.5	5.1	JJL	
16 / JUL / 2024	0904	5.2	5.5	5.1	JJL	
17 / JUL / 2024	1059	5.2	5.5	5.1	JJL	
18 / JUL / 2024	0937	5.3	5.5	5.2	JJL	
19 / JUL / 2024	1127	5.3	5.7	5.1	JJL	
20 / JUL / 2024						Saturday
21 / JUL / 2024						Sunday
22 / JUL / 2024	1118	5.3	5.4	5.1	KLH	
23 / JUL / 2024	1042	7.2	7.8	7.1	JW	
24 / JUL / 2024	0941	5.2	5.5	5.1	JJL	
25 / JUL / 2024	0935	7.3	7.5	7.1	JW	
26 / JUL / 2024	1617	5.2	5.5	5.1	JJL	
27 / JUL / 2024						Saturday
28 / JUL / 2024						Sunday
29 / JUL / 2024	0925	5.2	5.6	5.1	KLH	
30 / JUL / 2024	1402	5.5	5.6	5.1	JJL	
31 / JUL / 2024	1409	5.5	5.9	5.4	JJL	

Pharmacist: Jen-Jui Lin

0000_240629135621.dm

DISP_GRP_1



29/06/2024 13:57:00

1. OPT	-21.2 [°C]	2. Multi	-25.8 [°C]	3. B1CT	20.9 [°C]	4. SC-140	4.0 [°C]
22110907	5.3 [°C]	6. 201SAR	5.1 [°C]	22100813	22.1 [°C]	8. B2CT	20.4 [°C]
22070604	4.8 [°C]	10. KCC-3	5.4 [°C]				

Jen-Jui Liu
01 Aug 2024