

Temperature Record

Investigational Product Stored Under Refrigerated Condition (2 to 8 °C)

Model: MPR-1412 (22110907) TP215343

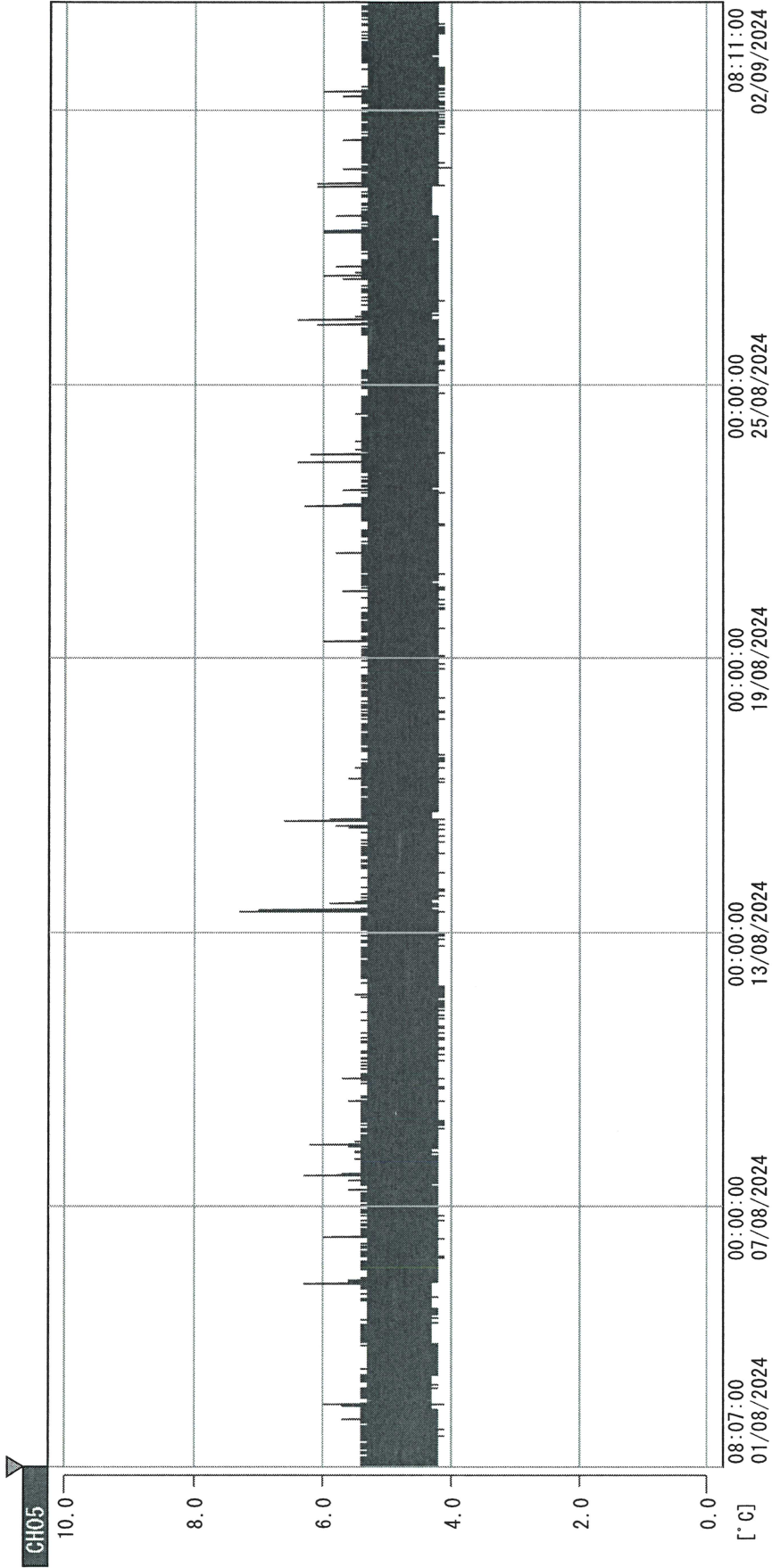
CH05

Date (DD/MM/YY)	Time (24hr)	Temperature (°C)			Signature (Initial)	Comments
		Now	Max	Min		
01 / AUG / 2024	0751	4.5	4.7	4.4	JJL	
02 / AUG / 2024	1009	4.4	4.8	4.3	KLH	
03 / AUG / 2024						Saturday
04 / AUG / 2024						Sunday
05 / AUG / 2024	0741	4.5	4.8	4.3	JJL	
06 / AUG / 2024	0843	4.7	4.9	4.6	JJL	
07 / AUG / 2024	0747	4.5	4.9	4.4	JJL	
08 / AUG / 2024	0826	4.5	4.8	4.4	KLH	
09 / AUG / 2024	0750	4.8	4.9	4.5	JJL	
10 / AUG / 2024						Saturday
11 / AUG / 2024						Sunday
12 / AUG / 2024	0906	4.6	5.3	4.3	KLH	
13 / AUG / 2024	0752	4.9	4.9	4.6	JJL	
14 / AUG / 2024	0755	4.6	5.0	4.6	JJL	
15 / AUG / 2024	0747	4.7	4.9	4.6	JJL	
16 / AUG / 2024	0908	4.3	5.0	3.0	JYW	
17 / AUG / 2024						Saturday
18 / AUG / 2024						Sunday
19 / AUG / 2024	0847	4.7	4.9	4.3	JYW	
20 / AUG / 2024	0749	4.7	5.0	4.6	JJL	
21 / AUG / 2024	0749	4.8	5.0	4.7	JJL	
22 / AUG / 2024	0855	4.8	5.0	4.7	JJL	
23 / AUG / 2024	0758	4.7	5.2	4.5	JJL	
24 / AUG / 2024						Saturday
25 / AUG / 2024						Sunday
26 / AUG / 2024	0755	4.8	5.1	4.6	JJL	
27 / AUG / 2024	0755	4.8	5.1	4.7	JJL	
28 / AUG / 2024	0722	4.7	5.6	4.1	JYW	
29 / AUG / 2024	0757	4.6	5.1	4.6	JJL	
30 / AUG / 2024	0800	4.9	5.1	4.6	JJL	
31 / AUG / 2024						Saturday

Pharmacist: Jen-Jui Lin

0000_240801081139. dm

DISP_GRP_1



01/08/2024 08:12:00

1. OPT	-22.4 [°C]	2. Multi	-22.6 [°C]	3. B1CT	20.4 [°C]	4. SC-140	3.5 [°C]
22110907	5.4 [°C]	6. 201SAR	4.8 [°C]	7. kcc3	21.5 [°C]	8. B2CT	19.8 [°C]
22070604	4.5 [°C]	22100813	5.0 [°C]				

Jean-Ju Li
02 SEP 2024