

Temperature Record

Investigational Product Stored Under Refrigerated Condition (2 to 8 °C)

CH09

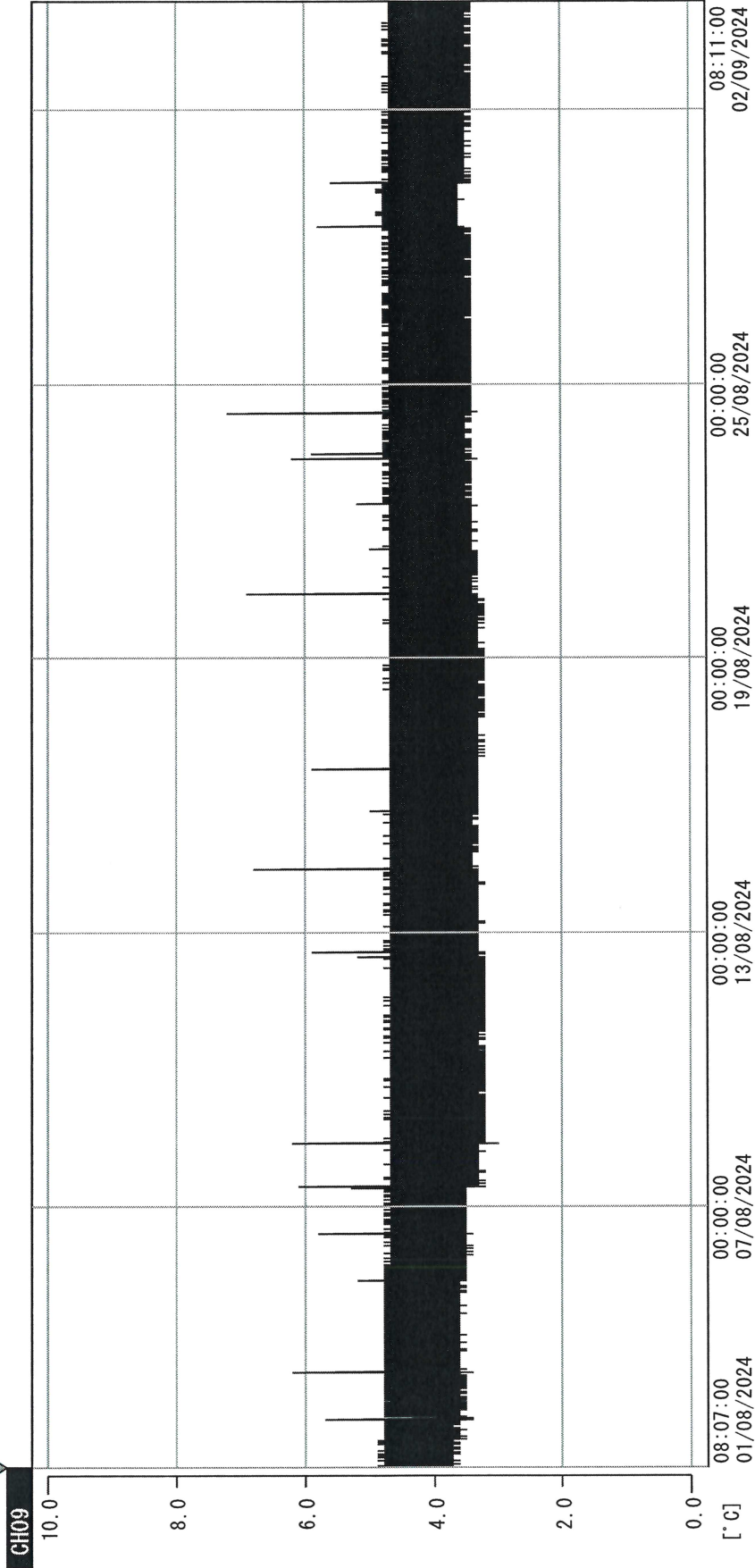
B2 Model: MPR-1412 (22070604) TP215288

Date (DD/MMM/YYYY)	Time (24hr)	Temperature (°C)			Signature (Initial)	Comments
		Now	Max	Min		
01 / AUG / 2024	0931	5.1	5.3	4.9	JJL	
02 / AUG / 2024	0954	4.9	5.2	4.7	KLH	
03 / AUG / 2024						Saturday
04 / AUG / 2024						Sunday
05 / AUG / 2024	0912	4.9	5.2	4.6	JJL	
06 / AUG / 2024	1008	4.9	5.4	4.8	KLH	
07 / AUG / 2024	1031	5.0	5.2	4.9	JJL	
08 / AUG / 2024	0942	5.1	5.3	5.0	KLH	
09 / AUG / 2024	1526	5.5	5.5	5.1	JJL	
10 / AUG / 2024						Saturday
11 / AUG / 2024						Sunday
12 / AUG / 2024	1124	5.7	5.7	5.3	SYW	
13 / AUG / 2024	1035	5.3	6.0	5.1	KLH	
14 / AUG / 2024	0951	5.0	5.5	5.0	KLH	
15 / AUG / 2024	1438	5.1	5.2	5.0	JJL	
16 / AUG / 2024	1415	5.3	5.5	4.9	JJL	
17 / AUG / 2024						Saturday
18 / AUG / 2024						Sunday
19 / AUG / 2024	1042	5.6	5.6	5.1	SYW	
20 / AUG / 2024	0959	5.3	5.6	5.2	KLH	
21 / AUG / 2024	0933	5.6	5.6	5.2	JJL	
22 / AUG / 2024	0926	5.8	5.4	5.0	JJL	
23 / AUG / 2024	0906	5.1	5.3	4.9	JJL	
24 / AUG / 2024						Saturday
25 / AUG / 2024						Sunday
26 / AUG / 2024	1433	4.9	5.3	4.7	JJL	
27 / AUG / 2024	1445	5.0	5.2	4.8	JJL	
28 / AUG / 2024	1033	4.7	5.2	4.6	SYW	
29 / AUG / 2024	1023	5.4	5.5	4.7	KLH	
30 / AUG / 2024	1504	5.3	5.7	5.2	JJL	
31 / AUG / 2024						Saturday

Pharmacist: Jen-Jui Lin

0000_240801081139.dfm

DISP_GRP_1



01/08/2024 08:12:00

1. OPT	-22.4 [°C]	2. Multi	-22.6 [°C]	3. B1G1	20.4 [°C]	4. SC-140	3.5 [°C]
22110907	5.4 [°C]	6. 201SAR	4.8 [°C]	7. kcc3	21.5 [°C]	8. B2C1	19.8 [°C]
22070604	4.5 [°C]	22100813	5.0 [°C]				

Jen-Jui Lin
02SEP2024