

Temperature Record

Investigational Product Stored Under Refrigerated Condition (2 to 8 °C)

CH10

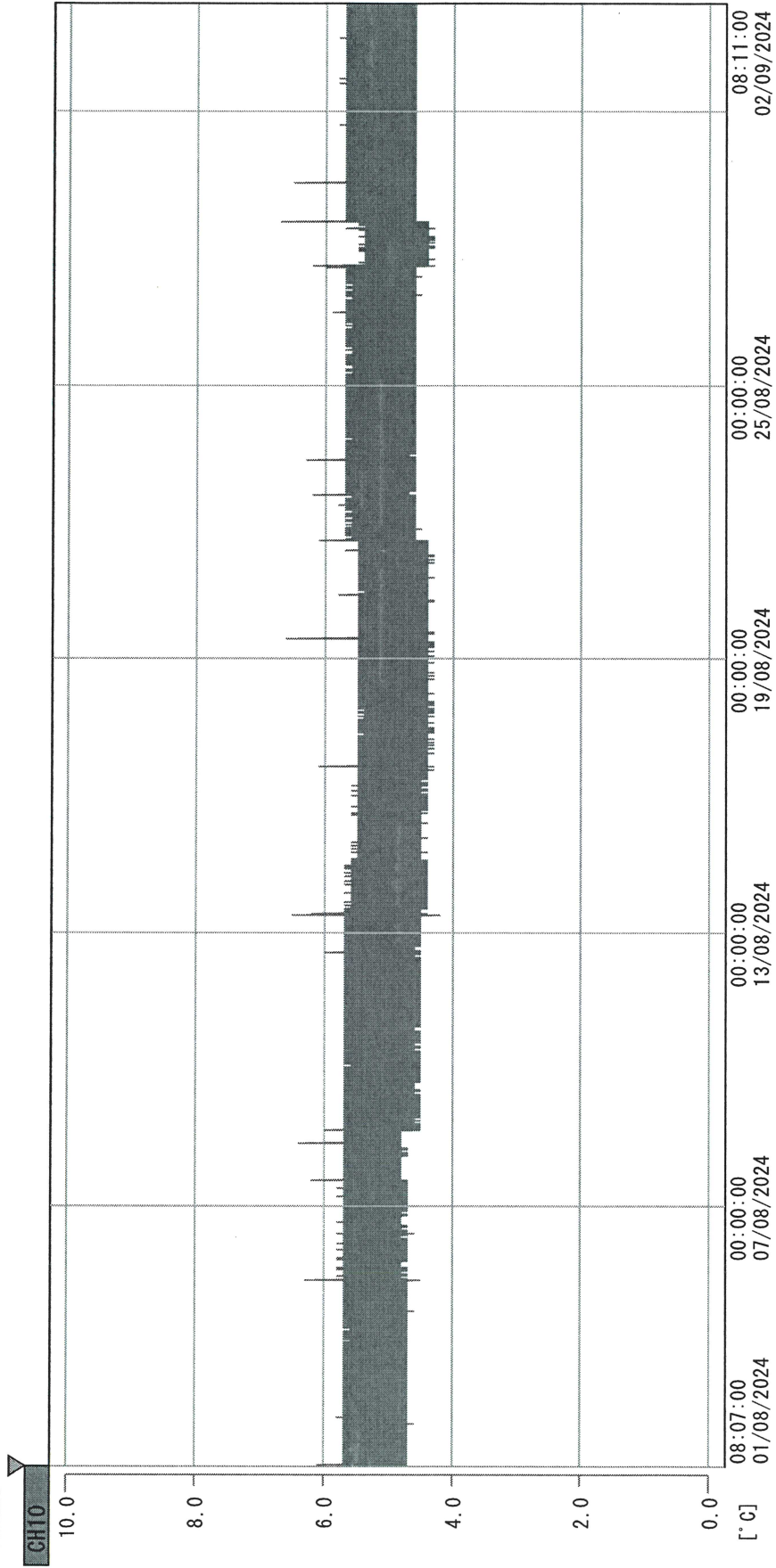
B2 Model: MPR-1412 (22100813) TP215279

Date (DD/MMM/YYYY)	Time (24hr)	Temperature (°C)			Signature (Initial)	Comments
		Now	Max	Min		
01 / AUG / 2024	0932	5.5	5.6	5.4	TTL	
02 / AUG / 2024	0955	5.5	5.7	5.4	KLH	
03 / AUG / 2024						Saturday
04 / AUG / 2024						Sunday
05 / AUG / 2024	0910	5.5	5.6	5.4	JTL	
06 / AUG / 2024	1009	5.4	5.7	5.2	KLH	
07 / AUG / 2024	1032	5.3	5.5	5.2	JTL	
08 / AUG / 2024	0943	5.3	5.7	5.2	KLH	
09 / AUG / 2024	1527	5.4	5.5	5.2	JTL	
10 / AUG / 2024						Saturday
11 / AUG / 2024						Sunday
12 / AUG / 2024	1127	5.3	5.6	5.2	SYW	
13 / AUG / 2024	1036	5.5	5.7	5.2	KLH	
14 / AUG / 2024	0952	5.3	5.7	5.3	KLH	
15 / AUG / 2024	1439	5.3	5.6	5.2	JTL	
16 / AUG / 2024	1416	5.4	5.6	5.3	JTL	
17 / AUG / 2024						Saturday
18 / AUG / 2024						Sunday
19 / AUG / 2024	1043	5.3	5.6	5.2	SYW	
20 / AUG / 2024	1000	5.4	5.6	5.2	KLH	
21 / AUG / 2024	0935	5.5	5.5	5.2	JTL	
22 / AUG / 2024	0926	5.3	5.5	5.2	JTL	
23 / AUG / 2024	0907	5.3	5.6	5.2	JTL	
24 / AUG / 2024						Saturday
25 / AUG / 2024						Sunday
26 / AUG / 2024	1435	5.4	5.7	5.2	JTL	
27 / AUG / 2024	1445	5.5	5.6	5.2	JTL	
28 / AUG / 2024	1033	5.4	5.7	5.2	SYW	
29 / AUG / 2024	1024	5.4	6.0	5.1	KLH	
30 / AUG / 2024	1505	5.7	5.7	5.3	JTL	
31 / AUG / 2024						Saturday

Pharmacist: Jen-Jui Lin

0000_240801081139.dlm

DISP_GRP_1



01/08/2024 08:12:00

1. OPT	-22.4 [°C]	2. Multi	-22.6 [°C]	3. B1CT	20.4 [°C]	4. SC-140	3.5 [°C]
22110907	5.4 [°C]	6. 201SAR	4.8 [°C]	7. kcc3	21.5 [°C]	8. B2CT	19.8 [°C]
22070604	4.5 [°C]	22100813	5.0 [°C]				

Jen-Jui Lin
02-SEP-2024