

Temperature Record

Investigational Product Stored Under Refrigerated Condition (2 to 8 °C)

B2 Model: MPR-1412 (22100813) TP215279

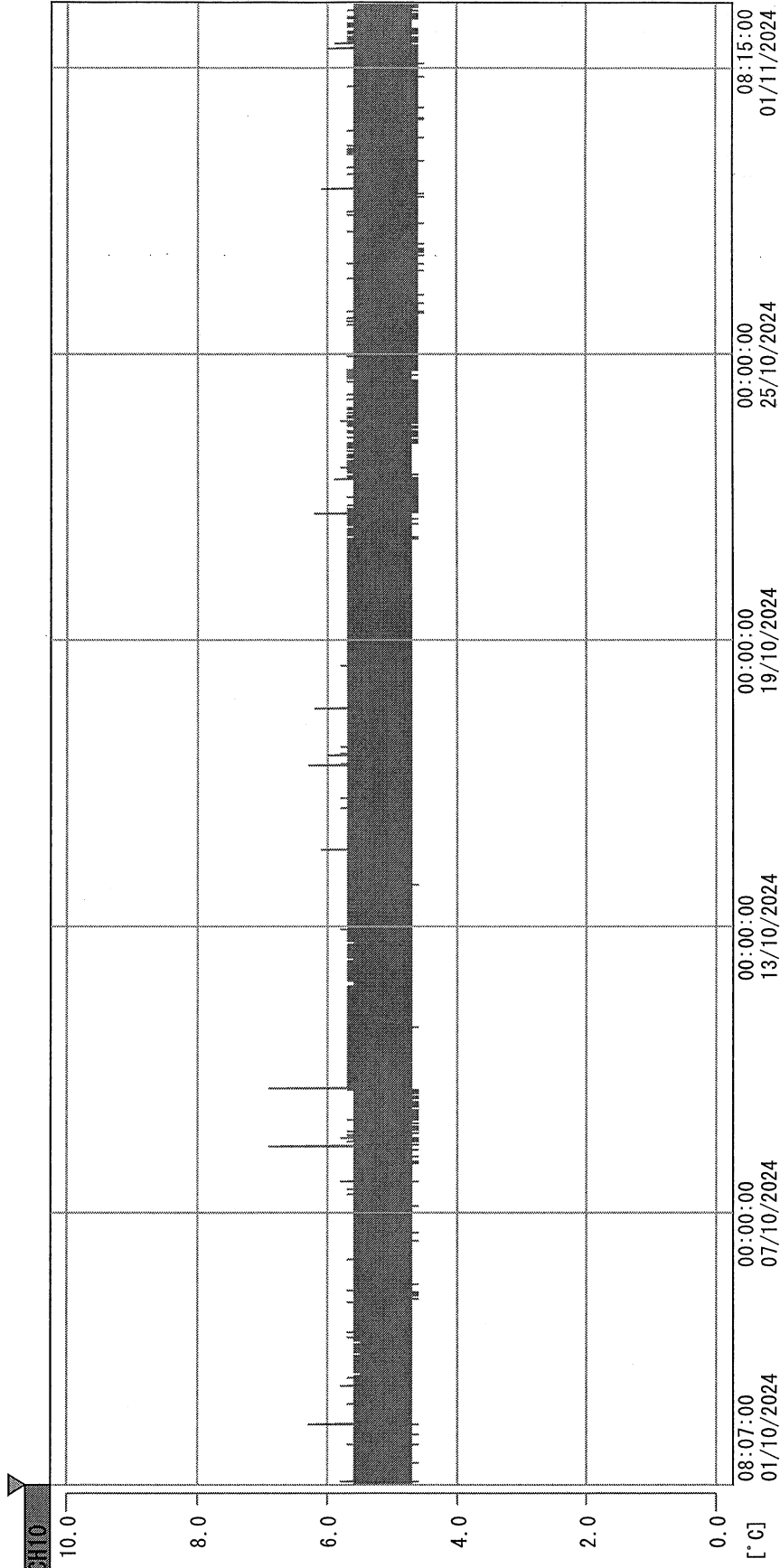
CH10

Date (DD/MMM/YYYY)	Time (24hr)	Temperature (°C)			Signature (Initial)	Comments
		Now	Max	Min		
01 / OCT / 2024	0957	5.4	5.5	5.2	JJL	
02 / OCT / 2024	1435	5.4	5.5	5.2	JJL	Typhoon
03 / OCT / 2024	0932	5.3	5.6	5.2	JJL	Typhoon
04 / OCT / 2024	0933	5.2	5.6	5.1	JJL	
05 / OCT / 2024						Saturday
06 / OCT / 2024						Sunday
07 / OCT / 2024	1610	5.3	5.4	5.1	JJL	
08 / OCT / 2024	0949	5.2	5.5	5.1	JJL	
09 / OCT / 2024	1436	5.5	5.8	5.2	JJL	
10 / OCT / 2024						Public Holiday
11 / OCT / 2024	0926	5.4	5.6	5.3	JJL	
12 / OCT / 2024						Saturday
13 / OCT / 2024						Sunday
14 / OCT / 2024	1425	5.4	5.4	5.2	JJL	
15 / OCT / 2024	1039	5.5	5.8	5.3	JJL	
16 / OCT / 2024	0923	5.4	5.6	5.3	JJL	
17 / OCT / 2024	1307	7.4	7.7	7.3	JW	
18 / OCT / 2024	1331	5.4	5.7	5.3	JJL	
19 / OCT / 2024						Saturday
20 / OCT / 2024						Sunday
21 / OCT / 2024	1050	5.6	5.8	5.4	JJL	
22 / OCT / 2024	0949	5.4	5.6	5.3	JJL	
23 / OCT / 2024	1417	5.4	5.6	5.3	JJL	
24 / OCT / 2024	1000	5.4	5.7	5.3	JW	
25 / OCT / 2024	0846	5.4	5.5	5.3	JJL	
26 / OCT / 2024						Saturday
27 / OCT / 2024						Sunday
28 / OCT / 2024	1107	5.4	5.6	5.3	KLH	
29 / OCT / 2024	1424	5.3	5.6	5.2	KLH	
30 / OCT / 2024	1124	7.2	7.5	7.1	JW	
31 / OCT / 2024	0908	7.3	7.5	7.2	JW	Typhoon

Pharmacist: *Jen-Jui Lu*

0000_241001080651.dfm

DISP_GRP_1



01/10/2024 08:07:00

1. OPT	-22.7 [°C]	2. Multi	-24.6 [°C]	3. B1C1	19.3 [°C]	4. SC-140	5.7 [°C]
22110907	4.4 [°C]	6. 201SAR	6.3 [°C]	7. kcc3	21.6 [°C]	8. B2C1	19.0 [°C]
22070604	4.1 [°C]	22100813	5.1 [°C]				

See-See Log
01 NOV 2024