

Temperature Record

Investigational Product Stored Under Refrigerated Condition (2 to 8 °C)

CH04

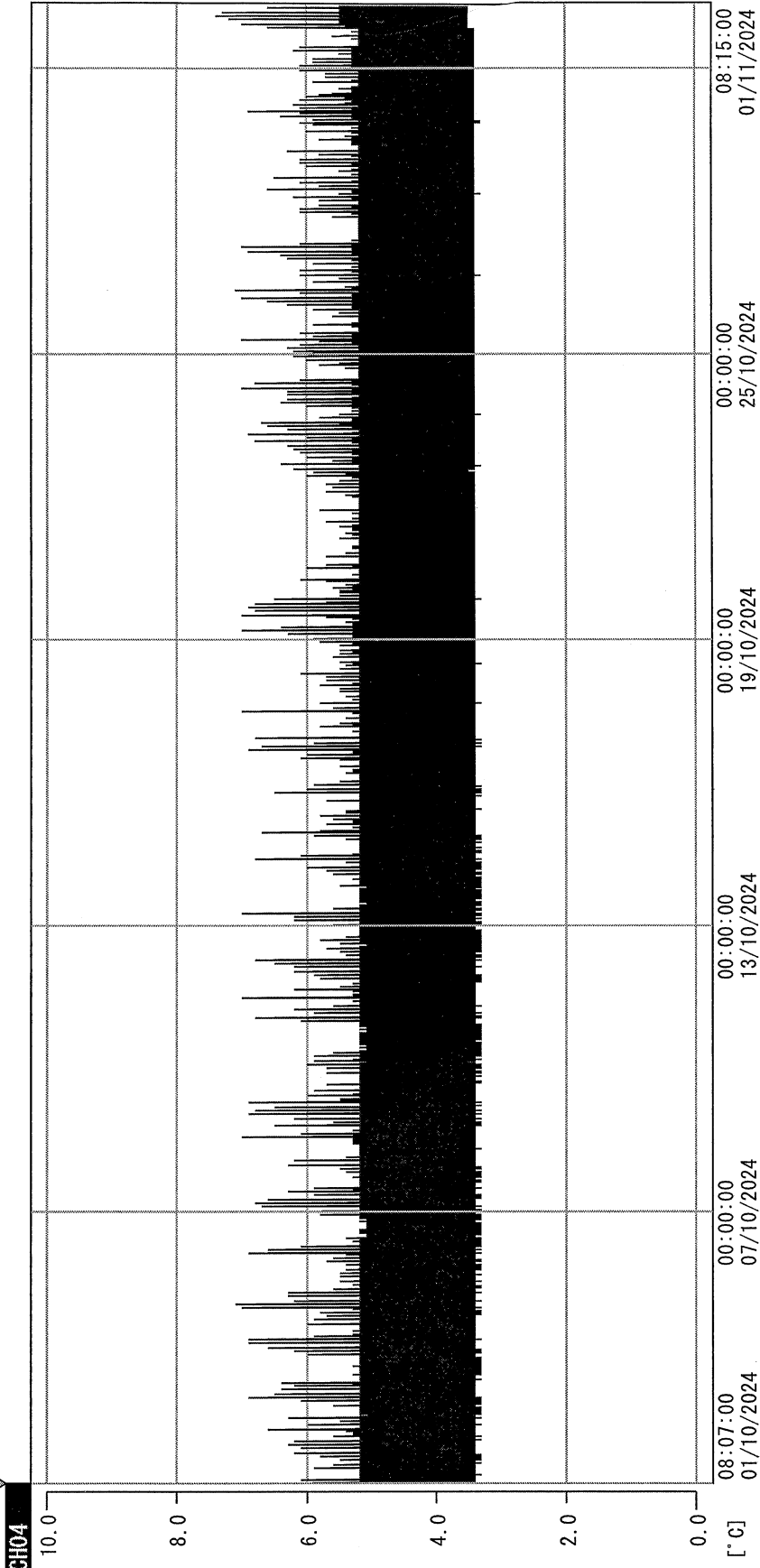
Model: SC-140E-CT (G1404001) TP215255

Date (DD/MMM/YYYY)	Time (24hr)	Temperature (°C)			Signature (Initial)	Comments
		Now	Max	Min		
01 / OCT / 2024	0749	4.7	5.3	4.6	JJL	
02 / OCT / 2024	0807	4.7	5.1	4.6	JJL	Typhoon
03 / OCT / 2024	0806	5.2	5.2	4.6	JJL	Typhoon
04 / OCT / 2024	0748	4.7	5.3	4.6	JJL	
05 / OCT / 2024						Saturday
06 / OCT / 2024						Sunday
07 / OCT / 2024	0748	4.7	5.3	4.5	JJL	
08 / OCT / 2024	0857	4.7	5.1	4.5	JJL	
09 / OCT / 2024	0801	4.6	5.3	4.5	JJL	
10 / OCT / 2024						Public Holiday
11 / OCT / 2024	0744	4.7	5.2	4.5	JJL	
12 / OCT / 2024						Saturday
13 / OCT / 2024						Sunday
14 / OCT / 2024	0802	4.5	5.2	4.4	JJL	
15 / OCT / 2024	0857	4.5	5.2	4.4	JJL	
16 / OCT / 2024	0748	4.6	5.1	4.5	JJL	
17 / OCT / 2024	0850	4.6	5.3	4.6	JJL	
18 / OCT / 2024	0757	4.7	5.3	4.6	JJL	
19 / OCT / 2024						Saturday
20 / OCT / 2024						Sunday
21 / OCT / 2024	0749	4.7	5.3	4.5	JJL	
22 / OCT / 2024	0749	4.7	5.0	4.6	JJL	
23 / OCT / 2024	0748	5.3	5.3	4.5	JJL	
24 / OCT / 2024	0752	4.8	5.3	4.5	JJL	
25 / OCT / 2024	0756	5.4	5.4	4.5	JJL	
26 / OCT / 2024						Saturday
27 / OCT / 2024						Sunday
28 / OCT / 2024	0752	4.8	5.3	4.5	JJL	
29 / OCT / 2024	0907	4.6	5.1	4.5	JW	
30 / OCT / 2024	0925	4.7	5.3	4.5	KH	
31 / OCT / 2024	1030	4.8	5.0	4.6	JW	Typhoon

Pharmacist: Jen-Jui Liu

0000_241001080651.dm

DISP_GRP_1



01/10/2024 08:07:00

1. OPT	-22.7 [°C]	2. Multi	-24.6 [°C]	3. B1[G]	19.3 [°C]	4. SC-140	5.7 [°C]
22110907	4.4 [°C]	6. 201SAR	6.3 [°C]	7. kec3	21.6 [°C]	8. B2[G]	19.0 [°C]
22070604	4.1 [°C]	22100813	5.1 [°C]				

Jen-Jui Lin
01/10/2024