

Temperature Record

Investigational Product Stored at Room Temperature (15 to 25 °C)

CH03

Model: TP201492

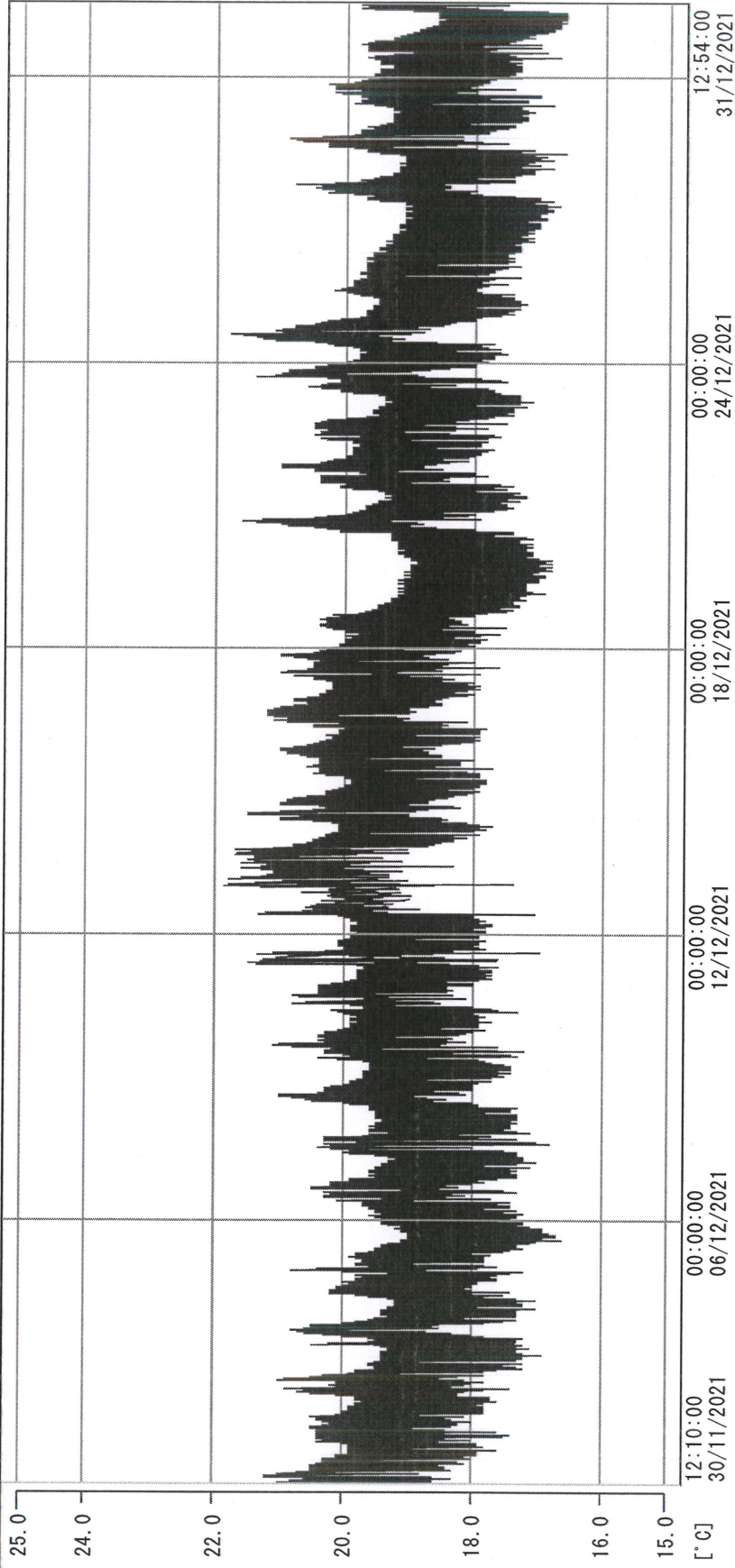
PHRCR1 (B1)

Date (DD/MM/YY)	Time (24hr)	Temperature (°C)			Signature (Initial)	Comments
		Now	Max	Min		
01 / DEC / 2021	0820	19.7	21.3	19.0	KLH	
02 / DEC / 2021	0913	20.3	20.5	18.9	SW	
03 / DEC / 2021	0905	19.3	21.0	18.3	KLH	
04 / DEC / 2021	0920	19.1	20.6	18.3	KLH	
05 / DEC / 2021						Sunday
06 / DEC / 2021	0853	19.7	20.3	17.9	SW	
07 / DEC / 2021	0905	19.4	20.6	18.3	KLH	
08 / DEC / 2021	0855	19.3	20.4	18.6	KLH	
09 / DEC / 2021	0900	19.2	20.8	18.8	KLH	
10 / DEC / 2021	0850	19.6	21.0	19.0	KLH	
11 / DEC / 2021	0915	20.9	21.0	18.8	KLH	
12 / DEC / 2021						Sunday
13 / DEC / 2021	0927	20.9	21.4	19.0	KLH	
14 / DEC / 2021	0910	19.9	21.8	19.0	SW	
15 / DEC / 2021	0842	20.2	21.7	18.9	KLH	
16 / DEC / 2021	0840	19.9	20.7	19.1	KLH	
17 / DEC / 2021	0915	20.2	21.3	19.2	KLH	
18 / DEC / 2021	0904	19.9	20.9	19.0	YPL	
19 / DEC / 2021						Sunday
20 / DEC / 2021	0850 0950 KLH 20/12/2021	19.0	20.2	18.0	KLH	
21 / DEC / 2021	0852	19.0	21.1	18.3	KLH	
22 / DEC / 2021	0915	19.7	20.8	18.8	KLH	
23 / DEC / 2021	0906	19.0	20.4	18.4	SW	
24 / DEC / 2021	0913	19.6	21.0	18.8	SW	
25 / DEC / 2021	0958	19.3	21.4	18.5	SW	
26 / DEC / 2021						Sunday
27 / DEC / 2021	0831	18.3	19.8	17.9	KLH	
28 / DEC / 2021	0845	18.7	20.4	18.1	KLH	
29 / DEC / 2021	0930	18.6	20.4	18.3	KLH	
30 / DEC / 2021	0830	18.7	20.0	18.6	KLH	
31 / DEC / 2021	0857	18.2	19.8	17.9	KLH	

 Pharmacist: *Lai Lin Huang*
 31 DEC 2021

DISP_GRP_1

CH03



30/11/2021 12:10:00

1. OPT	-22.7 [°C]	2. Multi	-27.0 [°C]	3. B1CT	21.0 [°C]	4. SC-140	4.3 [°C]
5. SC160	4.4 [°C]	6. 201SAR	4.2 [°C]	7. SC160	4.8 [°C]	8. B2CT	17.6 [°C]
TAG01	22.9 [°C]	10. KCC-3	5.3 [°C]	TAG01	-75.0 [°C]	TAG01	-75.0 [°C]

Xai Lin Phung

31 DEC 2021