

Temperature Record
Investigational Product Stored Under Refrigerated Condition (2 to 8 °C)
CH04

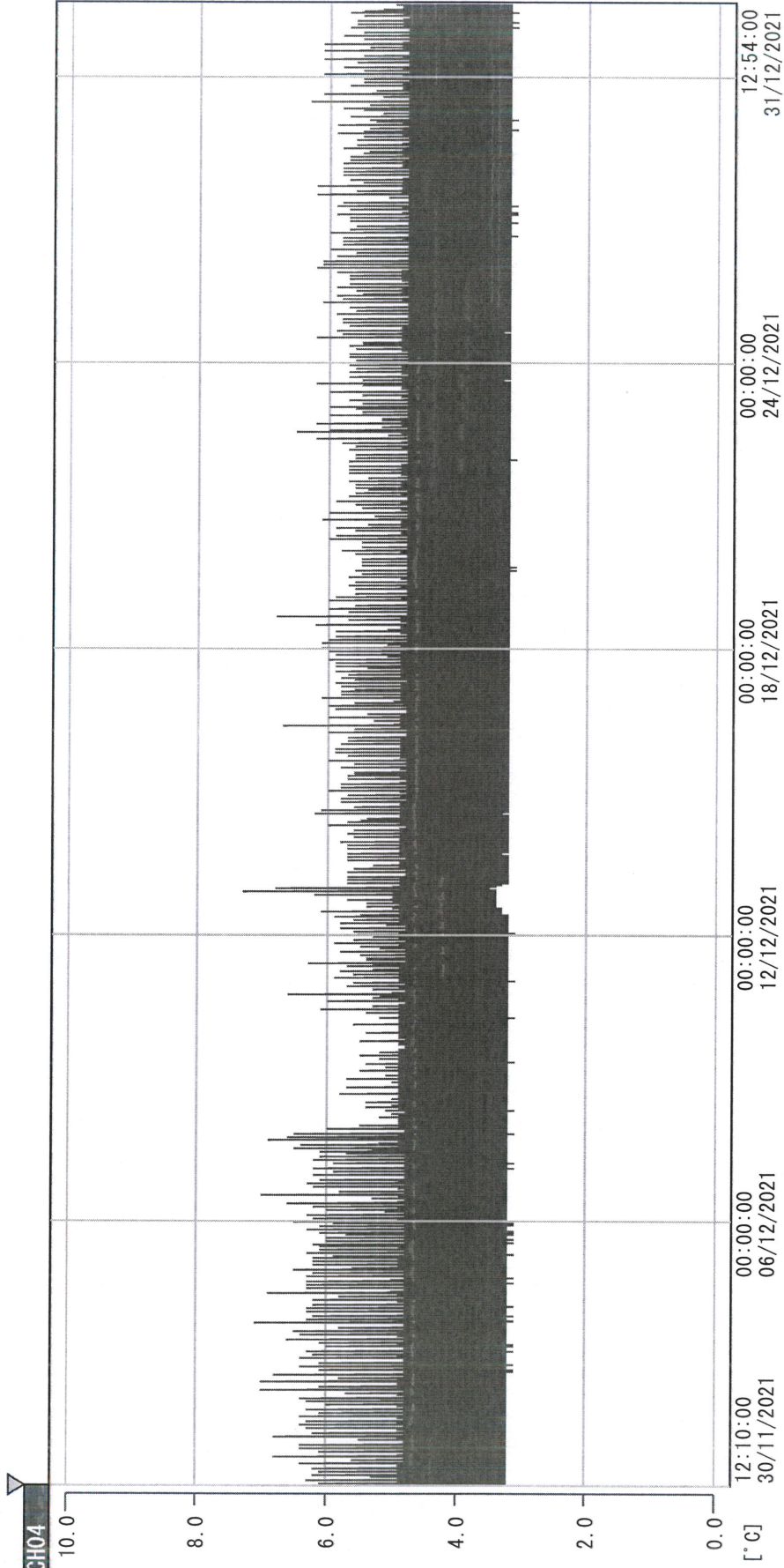
Model:SC-140E-CT (G1404001) TP201491

Date (DD/MMM/YYYY)	Time (24hr)	Temperature (°C)			Signature (Initial)	Comments
		Now	Max	Min		
01 / DEC / 2021	0822	4.0	4.9	3.2	KLH	
02 / DEC / 2021	0916	3.7	4.9	3.3	SYW	
03 / DEC / 2021	0907	3.7	5.0	3.3	KLH	
04 / DEC / 2021	0922	3.6	5.0	3.2	KLH	
05 / DEC / 2021						Sunday
06 / DEC / 2021	0855	3.2	4.9	3.2	SYW	
07 / DEC / 2021	0907	3.3	5.0	3.2	KLH	
08 / DEC / 2021	0857	3.3	4.9	3.2	KLH	
09 / DEC / 2021	0902	3.6	4.6	3.2	KLH	
10 / DEC / 2021	0852	3.7	4.0	3.2	KLH	
11 / DEC / 2021	0917	3.4	4.7	3.2	KLH	
12 / DEC / 2021						Sunday
13 / DEC / 2021	0929	3.6	5.1	3.1	KLH	
14 / DEC / 2021	0912	3.6	4.2	3.2	SYW	
15 / DEC / 2021	0844	3.5	4.4	3.2	KLH	
16 / DEC / 2021	0842	3.3	4.3	3.2	KLH	
17 / DEC / 2021	0917	3.6	4.8	3.1	KLH	
18 / DEC / 2021	0909	3.6	4.3	3.2	YPL	
19 / DEC / 2021						Sunday
20 / DEC / 2021	0852	3.3	4.8	3.1	KLH	
21 / DEC / 2021	0854	3.6	4.4	3.1	KLH	
22 / DEC / 2021	0917	3.3	4.1	3.1	KLH	
23 / DEC / 2021	0909	3.8	4.6	3.1	SYW	
24 / DEC / 2021	0916	3.4	4.4	3.1	SYW	
25 / DEC / 2021	1022	3.7	4.3	3.1	SYW	
26 / DEC / 2021						Sunday
27 / DEC / 2021	0833	3.9	4.4	3.1	KLH	
28 / DEC / 2021	0847	3.2	4.4	3.1	KLH	
29 / DEC / 2021	0932	3.2	4.2	3.1	KLH	
30 / DEC / 2021	0832	3.8	4.5	3.1	KLH	
31 / DEC / 2021	0859	3.2	4.3	3.1	KLH	

 Pharmacist: *Lin Hsiang*
 31 DEC 2021

D:\Recorder data\RAW DATA\2021\2021 Dec\211130120912\0000_211130120912. dm

DISP_GRP_1



30/11/2021 12:10:00

1. OPT	-22.7 [°C]	2. Multi	-27.0 [°C]	3. B1CT	21.0 [°C]	4. SC-140	4.3 [°C]
5. SC160	4.4 [°C]	6. 201SAR	4.2 [°C]	7. SC160	4.8 [°C]	8. B2CT	17.6 [°C]
TAG01	22.9 [°C]	10. KCC-3	5.3 [°C]	TAG01	-75.0 [°C]	TAG01	-75.0 [°C]

Don't fix change

31 DEC 2021