

Temperature Record

Investigational Product Stored Under Refrigerated Condition (2 to 8 °C)

CH05

Model:SC-160E (F1222006) TP190718

Date (DD/MMM/YYYY)	Time (24hr)	Temperature (°C)			Signature (Initial)	Comments
		Now	Max	Min		
01 / DEC / 2021	0821	5.1	5.9	4.2	KLH	
02 / DEC / 2021	0915	4.8	5.5	4.2	SW	
03 / DEC / 2021	0906	4.7	5.9	4.2	KLH	
04 / DEC / 2021	0921	5.0	5.8	4.3	KLH	
05 / DEC / 2021						Sunday
06 / DEC / 2021	0854	4.3	6.0	4.3	SW	
07 / DEC / 2021	0906	5.2	5.9	4.3	KLH	
08 / DEC / 2021	0856	5.0	5.9	4.3	KLH	
09 / DEC / 2021	0901	5.1	5.7	4.3	KLH	
10 / DEC / 2021	0851	5.1	5.9	4.3	KLH	
11 / DEC / 2021	0916	4.9	5.9	4.3	KLH	
12 / DEC / 2021						Sunday
13 / DEC / 2021	0928	4.5	6.3	4.1	KLH	
14 / DEC / 2021	0911	5.1	6.0	4.2	SW	
15 / DEC / 2021	0843	4.4	6.5	4.2	KLH	
16 / DEC / 2021	0841	5.3	6.4	4.4	KLH	
17 / DEC / 2021	0916	5.1	6.0	4.3	KLH	
18 / DEC / 2021	0906	5.4	6.0	4.2	YPL	
19 / DEC / 2021						Sunday
20 / DEC / 2021	0851	4.7	5.9	4.3	KLH	
21 / DEC / 2021	0853	5.1	5.6	4.1	KLH	
22 / DEC / 2021	0916	4.3	5.8	4.0	KLH	
23 / DEC / 2021	0908	5.0	5.6	3.9	SW	
24 / DEC / 2021	0915	4.6	6.0	4.4	SW	
25 / DEC / 2021	1001	4.8	5.6	4.1	SW	
26 / DEC / 2021						Sunday
27 / DEC / 2021	0832	5.2	6.1	4.4	KLH	
28 / DEC / 2021	0846	4.4	5.9	4.3	KLH	
29 / DEC / 2021	0931	5.2	6.0	4.3	KLH	
30 / DEC / 2021	0831	5.3	6.1	4.4	KLH	
31 / DEC / 2021	0858	5.6	6.1	4.8	KLH	

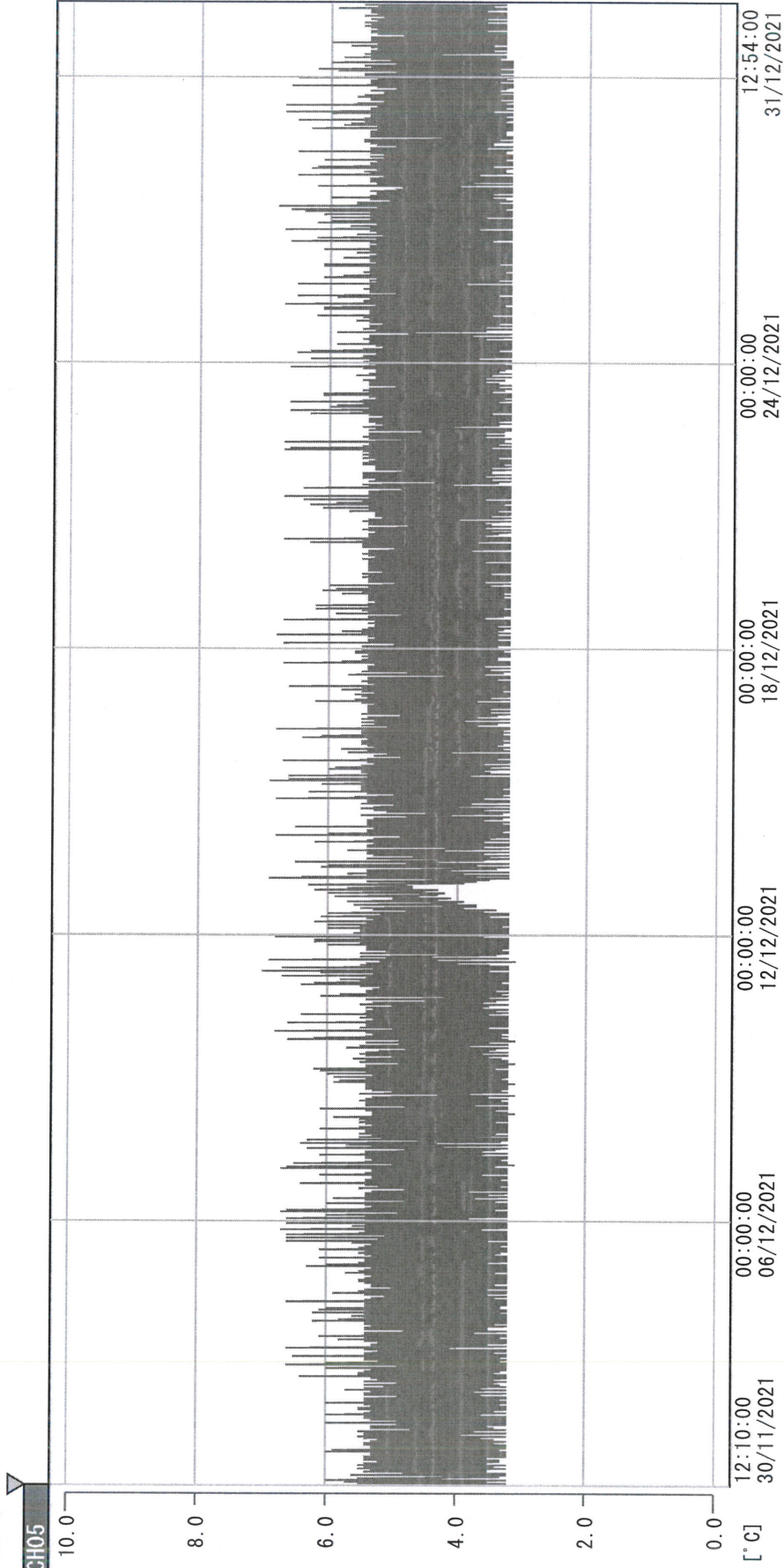
 Pharmacist: *Kai Lin Hwang*

31 DEC 2021

Page 1

(From JUN/2012 v0.4)

D:\Recorder data\RAW DATA\2021\Dec\211130120912\0000_211130120912.dm
 DISP_GRP_1



30/11/2021 12:10:00

1. OPT	-22.7 [°C]	2. Multi	-27.0 [°C]	3. B1CT	21.0 [°C]	4. SC-140	4.3 [°C]
5. SC160	4.4 [°C]	6. 201SAR	4.2 [°C]	7. SC160	4.8 [°C]	8. B2CT	17.6 [°C]
TAG01	22.9 [°C]	10. KCC-3	5.3 [°C]	TAG01	-75.0 [°C]	TAG01	-75.0 [°C]

Handwritten signature

31 DEC 2021