

Temperature Record

Investigational Product Stored Under Refrigerated Condition (2 to 8 °C)

B2 Model: TP200650 Model: SC-160E H1224001

CH07

Date (DD/MM/YY)	Time (24hr)	Temperature (°C)			Signature (Initial)	Comments
		Now	Max	Min		
01 / DEC / 2021	1530	4.1	4.9	4.0	SW	
02 / DEC / 2021	0945	4.1	5.0	4.0	KLH	
03 / DEC / 2021	1436	4.0	5.0	3.9	SW	
04 / DEC / 2021	1006	4.2	4.9	3.9	KLH	
05 / DEC / 2021						Sunday
06 / DEC / 2021	1044	4.0	5.0	3.9	SW	
07 / DEC / 2021	1114	4.5	4.9	4.0	KLH	
08 / DEC / 2021	1008	4.1	4.8	3.9	SW	
09 / DEC / 2021	1058	4.0	4.7	3.9	KLH	
10 / DEC / 2021	1123	4.0	4.8	3.9	SW	
11 / DEC / 2021	1106	4.1	4.6	3.9	KLH	
12 / DEC / 2021						Sunday
13 / DEC / 2021	1437	4.1	4.6	3.9	KLH	
14 / DEC / 2021	1053	4.0	4.7	3.9	SW	
15 / DEC / 2021	1020	4.1	4.8	3.9	KLH	
16 / DEC / 2021	1358	4.1	4.7	3.9	KLH	
17 / DEC / 2021	1214	4.0	4.6	3.9	KLH	
18 / DEC / 2021	1155	4.1	4.7	3.9	YPL	
19 / DEC / 2021						Sunday
20 / DEC / 2021	1459	4.2	4.5	3.9	KLH	
21 / DEC / 2021	1627	4.2	4.6	3.9	KLH	
22 / DEC / 2021	1229	4.2	4.8	3.9	KLH	
23 / DEC / 2021	0954	4.4	4.7	3.9	SW	
24 / DEC / 2021	1535	4.2	5.0	3.9	SW	
25 / DEC / 2021	1006	4.0	4.7	3.9	SW	
26 / DEC / 2021						Sunday
27 / DEC / 2021	1000	3.9	4.8	3.9	KLH	
28 / DEC / 2021	1430	4.2	4.7	3.9	KLH	
29 / DEC / 2021	1408	4.2	4.5	3.9	KLH	
30 / DEC / 2021	1403	4.0	4.6	3.9	KLH	
31 / DEC / 2021	1157	4.0	4.5	3.9	KLH	

 Pharmacist: *Hai Lin Huang*

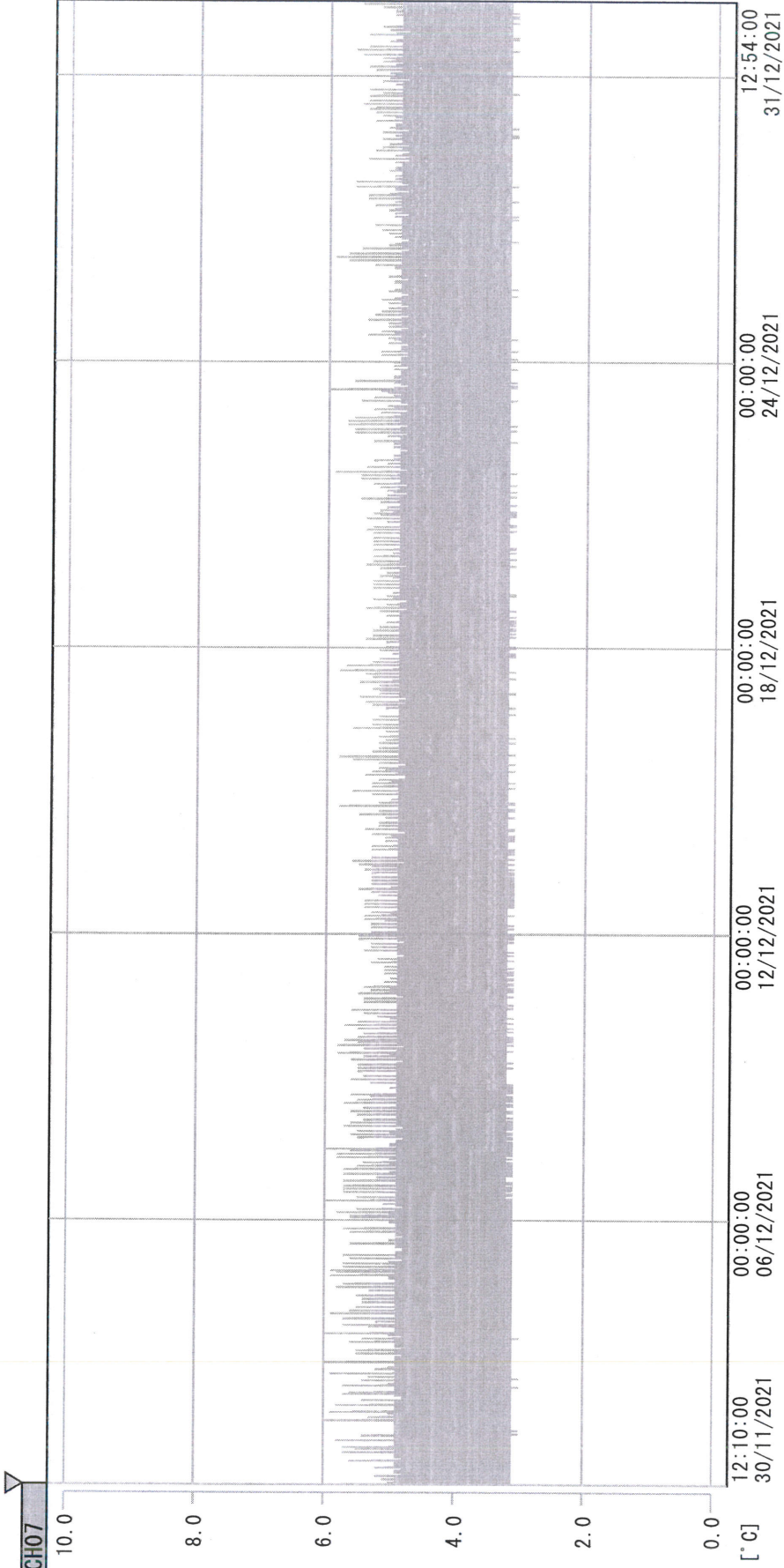
31 DEC 2021

Page 1

(From JUN/2012 V0.4)

D:\Recorder data\RAW DATA\2021\Dec\211130120912\0000_211130120912.d

DISP_GRP_1



30/11/2021 12:10:00

1. OPT	-22.7 [°C]	2. Multi	-27.0 [°C]	3. B1CT	21.0 [°C]	4. SC-140	4.3 [°C]
5. SC160	4.4 [°C]	6. 201SAR	4.2 [°C]	7. SC160	4.8 [°C]	8. B2CT	17.6 [°C]
TAG01	22.9 [°C]	10. KCC-3	5.3 [°C]	TAG01	-75.0 [°C]	TAG01	-75.0 [°C]

Kai bin Hung
31 DEC 2021