

Temperature Record

Investigational Product Stored Under Refrigerated Condition (2 to 8 °C)

CH10

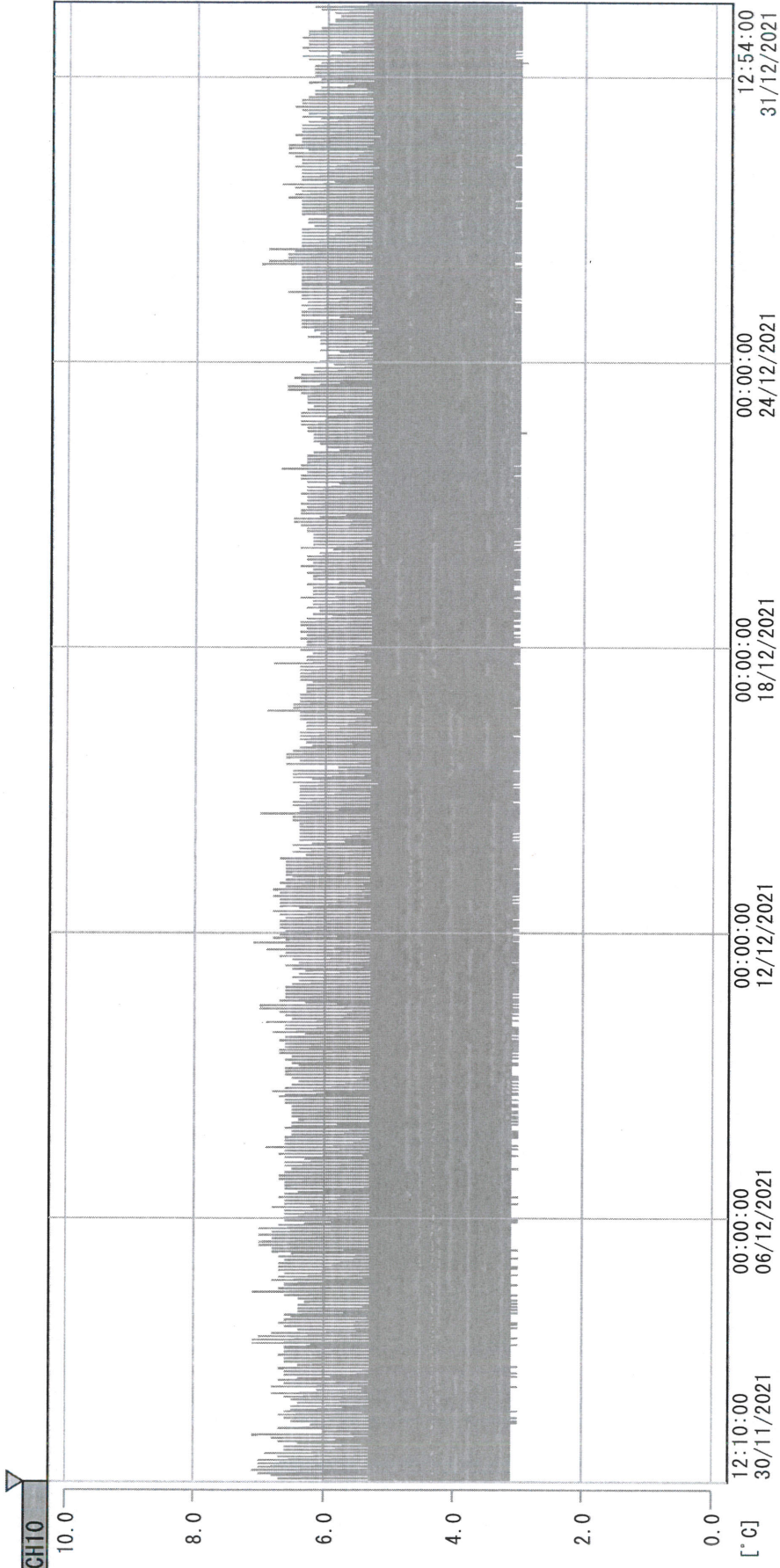
B2 Model: KCC3 TP 190672

Date (DD/MMM/YYYY)	Time (24hr)	Temperature (°C)			Signature (Initial)	Comments
		Now	Max	Min		
01 / DEC / 2021	1531	4.7	6.7	4.7	SLW	
02 / DEC / 2021	0946	4.6	6.2	4.4	KLH	
03 / DEC / 2021	1437	7.1	6.4	4.4	SLW	
04 / DEC / 2021	1007	4.6	6.2	4.4	KLH	
05 / DEC / 2021						Sunday
06 / DEC / 2021	1045	7.2	6.4	4.4	SLW	
07 / DEC / 2021	1115	4.9	6.1	4.4	KLH	
08 / DEC / 2021	1509	4.9	6.2	4.4	SLW	
09 / DEC / 2021	1059	5.6	6.2	4.4	KLH	
10 / DEC / 2021	1124	4.9	6.3	4.4	SLW	
11 / DEC / 2021	1107	5.1	6.3	4.4	KLH	
12 / DEC / 2021						Sunday
13 / DEC / 2021	1438	4.8	6.4	4.4	KLH	
14 / DEC / 2021	1053	4.6	6.0	4.3	SLW	
15 / DEC / 2021	1021	4.5	6.5	4.3	KLH	
16 / DEC / 2021	1359	4.6	6.1	4.5	KLH	
17 / DEC / 2021	1215	5.9	6.2	4.5	KLH	
18 / DEC / 2021	1157	4.8	6.1	4.5	YPL	
19 / DEC / 2021						Sunday
20 / DEC / 2021	1500	4.6	5.8	4.5	KLH	
21 / DEC / 2021	1628	5.0	6.0	4.5	KLH	
22 / DEC / 2021	1230	5.1	6.1	4.4	KLH	
23 / DEC / 2021	0955	4.6	7.8	4.7	SLW	
24 / DEC / 2021	1735	7.1	6.1	4.4	SLW	
25 / DEC / 2021	1007	4.8	7.9	4.7	SLW	
26 / DEC / 2021						Sunday
27 / DEC / 2021	1001	4.5	6.3	4.4	KLH	
28 / DEC / 2021	1431	4.9	6.1	4.4	KLH	
29 / DEC / 2021	1409	5.1	6.0	4.5	KLH	
30 / DEC / 2021	1404	4.6	5.8	4.5	KLH	
31 / DEC / 2021	1158	5.0	5.8	4.5	KLH	

 Pharmacist: *Kai Lin Hwang*
 31 DEC 2021

D:\Recorder data\RAW DATA\2021\2021 Dec\211130120912\0000_211130120912. dm

DISP_GRP_1



30/11/2021 12:10:00

1. OPT	-22.7 [°C]	2. Multi	-27.0 [°C]	3. B1CT	21.0 [°C]	4. SC-140	4.3 [°C]
5. SC160	4.4 [°C]	6. 201SAR	4.2 [°C]	7. SC160	4.8 [°C]	8. B2CT	17.6 [°C]
TAG01	22.9 [°C]	10. KCC-3	5.3 [°C]	TAG01	-75.0 [°C]	TAG01	-75.0 [°C]

(Handwritten signature)
31 DEC 2021