

Temperature Record

Investigational Product Stored at Room Temperature (15 to 25 °C)

Model: TP201492

PHRCR1 (B1)

CH03

Date (DD/MMM/YYYY)	Time (24hr)	Temperature (°C)			Signature (Initial)	Comments
		Now	Max	Min		
01 / JAN / 2022						Holiday
02 / JAN / 2022						Sunday
03 / JAN / 2022	0900	18.6	20.8	18.0	KLH	
04 / JAN / 2022	0858	18.6	19.7	18.4	SPW	
05 / JAN / 2022	0910	19.5	21.1	18.6	KLH	
06 / JAN / 2022	0901	19.1	21.3	18.7	KLH	
07 / JAN / 2022	0925	19.4	20.5	18.7	KLH	
08 / JAN / 2022	0818	19.0	20.6	18.7	KLH	
09 / JAN / 2022						Sunday
10 / JAN / 2022	0855	19.0	19.9	18.6	SPW	
11 / JAN / 2022	0900	19.3	20.3	18.7	KLH	
12 / JAN / 2022	0915	18.7	20.0	18.4	KLH	
13 / JAN / 2022	0916	18.6	19.8	18.3	KLH	
14 / JAN / 2022	0842	18.8	20.0	18.3	KLH	
15 / JAN / 2022	0905	18.9	19.6	18.3	SPW	
16 / JAN / 2022						Sunday
17 / JAN / 2022	0921	18.9	19.7	18.1	KLH	
18 / JAN / 2022	0830	19.0	20.2	18.2	KLH	
19 / JAN / 2022	0928	18.8	20.4	18.1	KLH	
20 / JAN / 2022	1020	19.2	20.4	18.1	KLH	
21 / JAN / 2022	0913	19.0	20.3	18.3	SPW	
22 / JAN / 2022	0939	19.6	20.2	18.6	YPL	
23 / JAN / 2022						Sunday
24 / JAN / 2022	0905	19.3	21.7	18.2	KLH	
25 / JAN / 2022	1000	20.1	20.3	18.3	KLH	
26 / JAN / 2022	0850	18.9	20.4	18.4	KLH	
27 / JAN / 2022	0920	20.5	21.1	19.0	KLH	
28 / JAN / 2022	0838	19.6	20.8	19.0	KLH	
29 / JAN / 2022	0833	19.5	21.2	19.1	KLH	
30 / JAN / 2022						Sunday
31 / JAN / 2022						Holiday

Pharmacist:

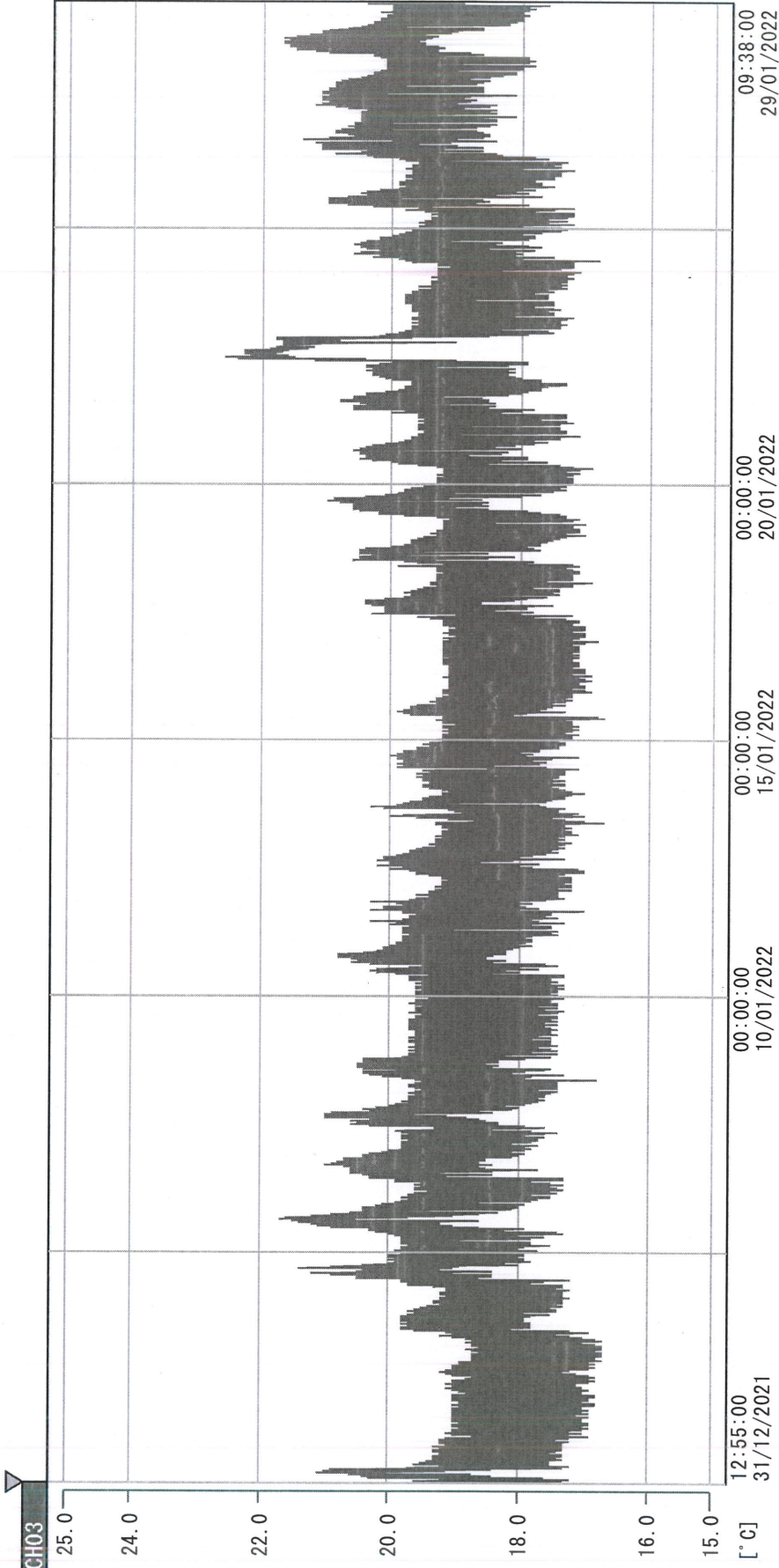
Hsin Lin Hwang

29 JAN 2022

Page 1

(From Jun/2012 v0.4)

D:\Recorder data\RAW DATA\2022\2022 Jan\211231125429\0000_211231125429.dm
 DISP_GRP_1



31/12/2021 12:55:00

1. OPT	-22.5 [°C]	2. Multi	-27.1 [°C]	3. B1CT	19.5 [°C]	4. SC-140	4.8 [°C]
5. SC160	4.2 [°C]	6. 201SAR	3.2 [°C]	7. SC160	3.3 [°C]	8. B2CT	18.5 [°C]
TAG01	21.5 [°C]	10. KCC-3	3.9 [°C]	TAG01	-75.0 [°C]	TAG01	-75.0 [°C]

David Lin
 29 JAN 2022