

Temperature Record

Investigational Product Stored Under Refrigerated Condition (2 to 8 °C)

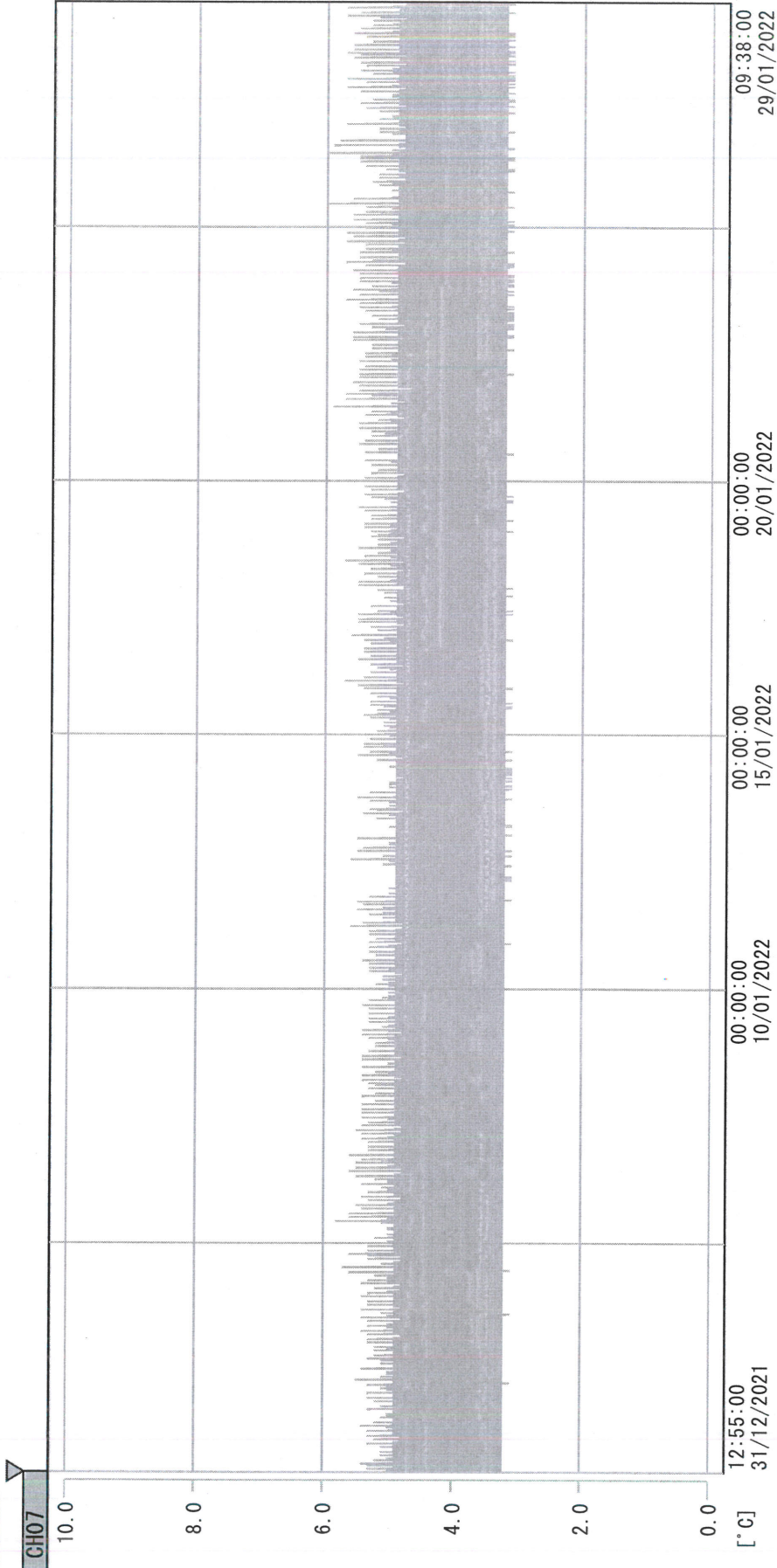
B2 Model: TP200650 Model: SC-160E H1224001

CH07

Date (DD/MMM/YYYY)	Time (24hr)	Temperature (°C)			Signature (Initial)	Comments
		Now	Max	Min		
01 / JAN / 2022						Holiday
02 / JAN / 2022						Sunday
03 / JAN / 2022	1102	4.1	4.5	3.9	KLH	
04 / JAN / 2022	0934	4.0	4.5	3.9	KLH	
05 / JAN / 2022	0959	4.3	4.7	3.9	KLH	
06 / JAN / 2022	1436	4.0	4.8	3.9	KLH	
07 / JAN / 2022	1501	4.3	4.7	3.9	KLH	
08 / JAN / 2022	1043	4.5	4.6	3.9	KLH	
09 / JAN / 2022						Sunday
10 / JAN / 2022	1129	4.1	4.5	3.9	SW	
11 / JAN / 2022	1402	4.1	4.6	3.9	KLH	
12 / JAN / 2022	1227	4.0	4.6	3.9	KLH	
13 / JAN / 2022	1208	4.0	4.7	3.9	KLH	
14 / JAN / 2022	0939	4.1	4.6	3.9	KLH	
15 / JAN / 2022	1007	4.1	4.5	3.9	SW	
16 / JAN / 2022						Sunday
17 / JAN / 2022	1033	4.1	4.6	3.8	KLH	
18 / JAN / 2022	1520	4.0	4.6	3.9	KLH	
19 / JAN / 2022	1120	3.9	4.5	3.9	SW	
20 / JAN / 2022	0957	4.2	4.5	3.9	KLH	
21 / JAN / 2022	0940	4.1	4.6	3.9	SW	
22 / JAN / 2022	1141	4.0	5.0	3.9	YPL	
23 / JAN / 2022						Sunday
24 / JAN / 2022	1448	3.9	4.8	3.9	KLH	
25 / JAN / 2022	1109	4.3	5.0	3.9	KLH	
26 / JAN / 2022	1003	4.0	4.7	3.9	KLH	
27 / JAN / 2022	1025	4.0	5.0	3.9	KLH	
28 / JAN / 2022	1433	4.2	4.8	3.9	KLH	
29 / JAN / 2022	0844	4.0	4.8	3.9	KLH	
30 / JAN / 2022						Sunday
31 / JAN / 2022						Holiday

 Pharmacist: *Hsi Lin Huang*
 29 JAN 2022

D:\Recorder data\RAW DATA\2022\2022 Jan\211231125429\0000_211231125429.dlm
 DISP_GRP_1



31/12/2021 12:55:00

1. OPT	-22.5 [°C]	2. Multi	-27.1 [°C]	3. B1CT	19.5 [°C]	4. SC-140	4.8 [°C]
5. SC160	4.2 [°C]	6. 201SAR	3.2 [°C]	7. SC160	3.3 [°C]	8. B2CT	18.5 [°C]
TAG01	21.5 [°C]	10. KCC-3	3.9 [°C]	TAG01	-75.0 [°C]	TAG01	-75.0 [°C]

Stan Lin Huang
 29 JAN 2022