

Temperature Record

Investigational Product Stored at Room Temperature (15 to 25 °C)

CH08

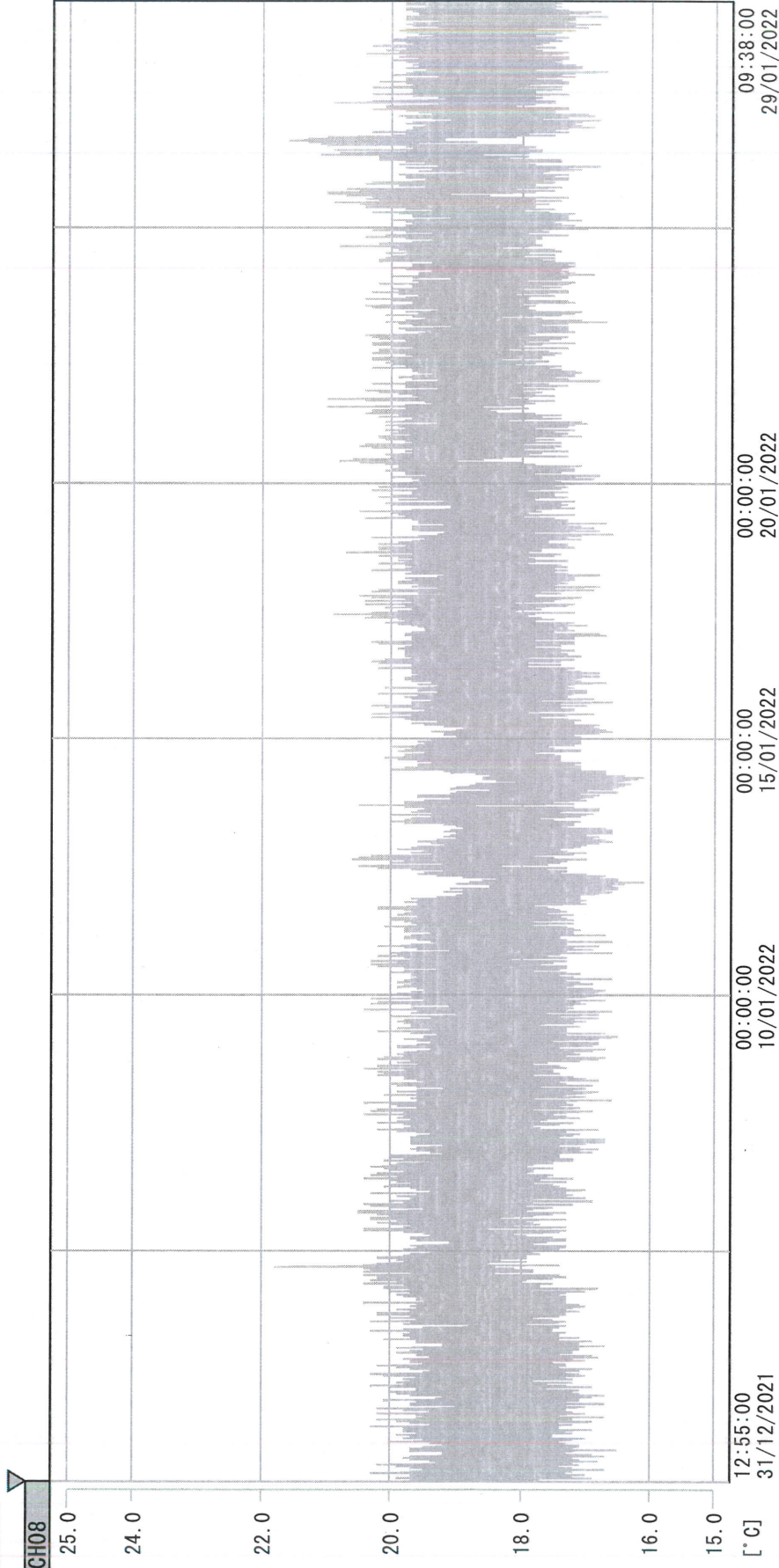
PHRCR2 (B2) model: TP191560

Date (DD/MMM/YYYY)	Time (24hr)	Temperature (°C)			Signature (Initial)	Comments
		Now	Max	Min		
01 / JAN / 2022						Holiday
02 / JAN / 2022						Sunday
03 / JAN / 2022	1104	18.8	19.1	17.9	KLH	
04 / JAN / 2022	0936	19.0	19.0	17.8	KLH	
05 / JAN / 2022	1001	19.1	19.7	18.0	KLH	
06 / JAN / 2022	1438	18.9	19.3	18.2	KLH	
07 / JAN / 2022	1503	18.9	19.6	18.0	KLH	
08 / JAN / 2022	1045	18.8	19.3	17.9	KLH	
09 / JAN / 2022						Sunday
10 / JAN / 2022	1130	18.8	19.0	17.9	SYW	
11 / JAN / 2022	1404	18.8	19.0	17.9	KLH	
12 / JAN / 2022	1229	19.2	19.2	17.4	KLH	
13 / JAN / 2022	1210	18.7	19.2	17.7	KLH	
14 / JAN / 2022	0941	18.7	19.0	17.2	KLH	
15 / JAN / 2022	1009	18.7	19.0	17.8	SYW	
16 / JAN / 2022						Sunday
17 / JAN / 2022	1035	19.2	19.2	17.9	KLH	
18 / JAN / 2022	1522	18.8	19.2	17.8	KLH	
19 / JAN / 2022	1122	18.7	19.2	17.9	SYW	
20 / JAN / 2022	0959	19.3	19.4	17.9	KLH	
21 / JAN / 2022	0962	19.1	19.5	18.2	SYW	
22 / JAN / 2022	1139	18.6	19.4	17.8	YPL	
23 / JAN / 2022						Sunday
24 / JAN / 2022	1450	18.7	19.0	17.9	KLH	
25 / JAN / 2022	1111	19.1	19.1	18.0	KLH	
26 / JAN / 2022	1005	19.5	19.7	17.9	KLH	
27 / JAN / 2022	1027	18.9	20.1	17.9	KLH	
28 / JAN / 2022	1435	18.7	19.3	18.1	KLH	
29 / JAN / 2022	0846	18.4	19.0	17.9	KLH	
30 / JAN / 2022						Sunday
31 / JAN / 2022						Holiday

 Pharmacist: *Shi Lin Huang*
 29 JAN 2022

D:\Recorder data\RAW DATA\2022\2022 Jan\211231125429\0000_211231125429. dm

DISP_GRP_1



31/12/2021 12:55:00

1. OPT	-22.5 [°C]	2. Multi	-27.1 [°C]	3. B1CT	19.5 [°C]	4. SC-140	4.8 [°C]
5. SC160	4.2 [°C]	6. 201SAR	3.2 [°C]	7. SC160	3.3 [°C]	8. B2CT	18.5 [°C]
TAG01	21.5 [°C]	10. KCC-3	3.9 [°C]	TAG01	-75.0 [°C]	TAG01	-75.0 [°C]

Stevi Lin Phuang

29 JAN 2022