

### Temperature Record

#### Investigational Product Stored Under Refrigerated Condition (2 to 8 °C)

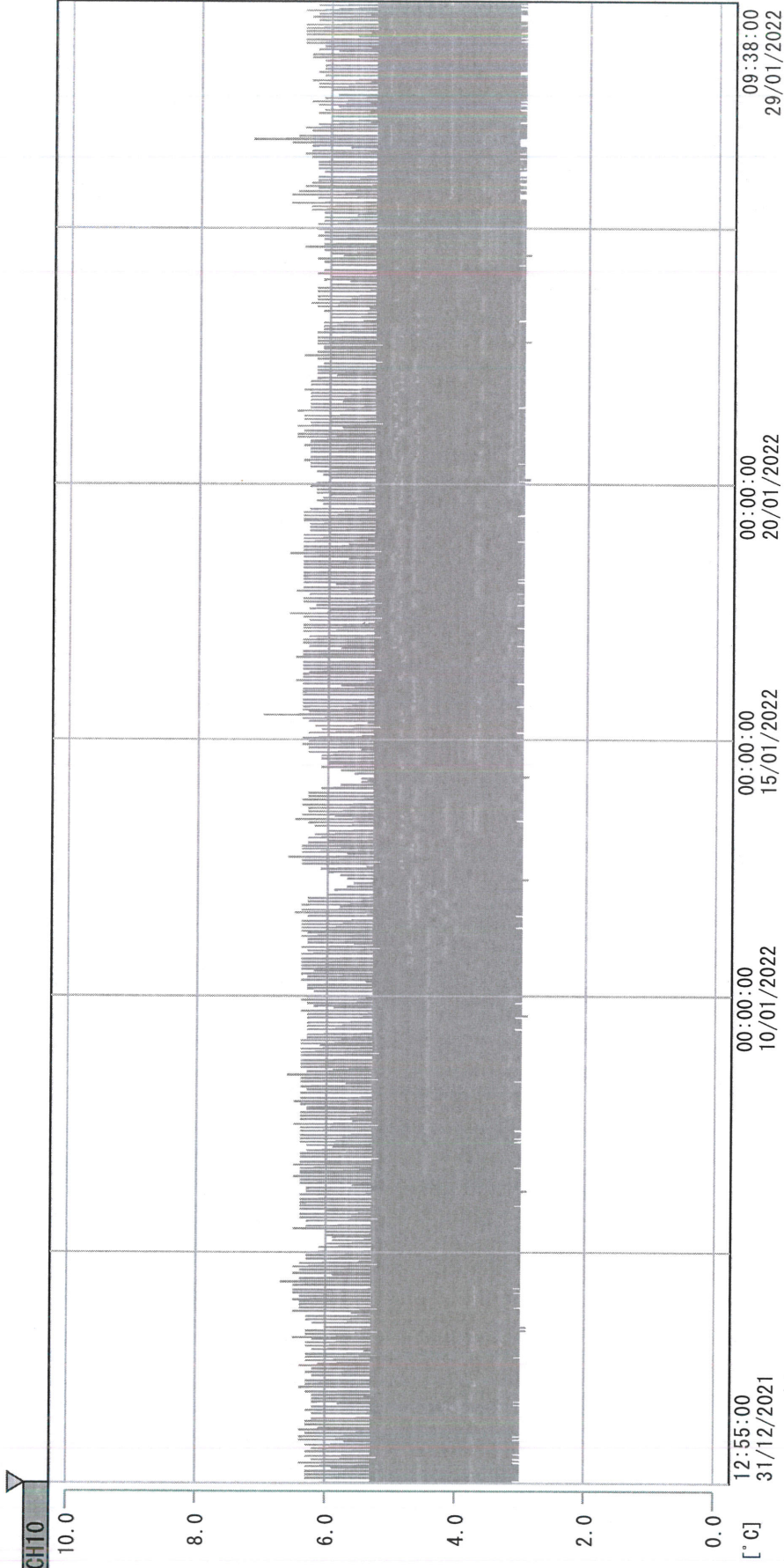
B2 Model: KCC3 TP 190672

CH10

Date (DD/MMM/YYYY)	Time (24hr)	Temperature (°C)			Signature (Initial)	Comments
		Now	Max	Min		
01 / JAN / 2022						Holiday
02 / JAN / 2022						Sunday
03 / JAN / 2022	1103	5.0	5.9	4.5	KLH	
04 / JAN / 2022	0935	4.7	6.0	4.5	KLH	
05 / JAN / 2022	1000	4.8	6.0	4.5	KLH	
06 / JAN / 2022	1437	5.0	5.9	4.5	KLH	
07 / JAN / 2022	1502	4.8	5.9	4.5	KLH	
08 / JAN / 2022	1044	4.5	6.0	4.5	KLH	
09 / JAN / 2022						Sunday
10 / JAN / 2022	1529	4.9	6.0	4.5	SYW	
11 / JAN / 2022	1403	4.5	5.9	4.5	KLH	
12 / JAN / 2022	1228	4.9	6.0	4.4	KLH	
13 / JAN / 2022	1209	4.8	6.0	4.5	KLH	
14 / JAN / 2022	0940	5.0	5.9	4.4	KLH	
15 / JAN / 2022	1008	5.0	5.9	4.4	SYW	
16 / JAN / 2022						Sunday
17 / JAN / 2022	1034	4.5	6.2	4.5	KLH	
18 / JAN / 2022	1521	5.7	6.0	4.5	KLH	
19 / JAN / 2022	1121	5.0	5.9	4.5	SYW	
20 / JAN / 2022	0958	5.1	5.8	4.5	KLH	
21 / JAN / 2022	0944	4.6	6.0	4.5	SYW	
22 / JAN / 2022	1142	4.6	6.0	4.5	YPL	
23 / JAN / 2022						Sunday
24 / JAN / 2022	1449	5.6	5.9	4.6	KLH	
25 / JAN / 2022	1110	4.8	5.9	4.6	KLH	
26 / JAN / 2022	1004	4.7	6.2	4.7	KLH	
27 / JAN / 2022	1026	4.8	6.5	4.7	KLH	
28 / JAN / 2022	1434	5.2	6.0	4.7	KLH	
29 / JAN / 2022	0845	5.1	6.1	4.8	KLH	
30 / JAN / 2022						Sunday
31 / JAN / 2022						Holiday

Pharmacist: *Harlin Hsing*  
29 JAN 2022

D:\Recorder data\RAW DATA\2022\2022 Jan\211231125429\0000\_211231125429.dlm  
 DISP\_GRP\_1



31/12/2021 12:55:00

1. OPT	-22.5 [°C]	2. Multi	-27.1 [°C]	3. B1CT	19.5 [°C]	4. SC-140	4.8 [°C]
5. SC160	4.2 [°C]	6. 201SAR	3.2 [°C]	7. SC160	3.3 [°C]	8. B2CT	18.5 [°C]
TAG01	21.5 [°C]	10. KCC-3	3.9 [°C]	TAG01	-75.0 [°C]	TAG01	-75.0 [°C]

*Stavilin Huang*

29 JAN 2022