

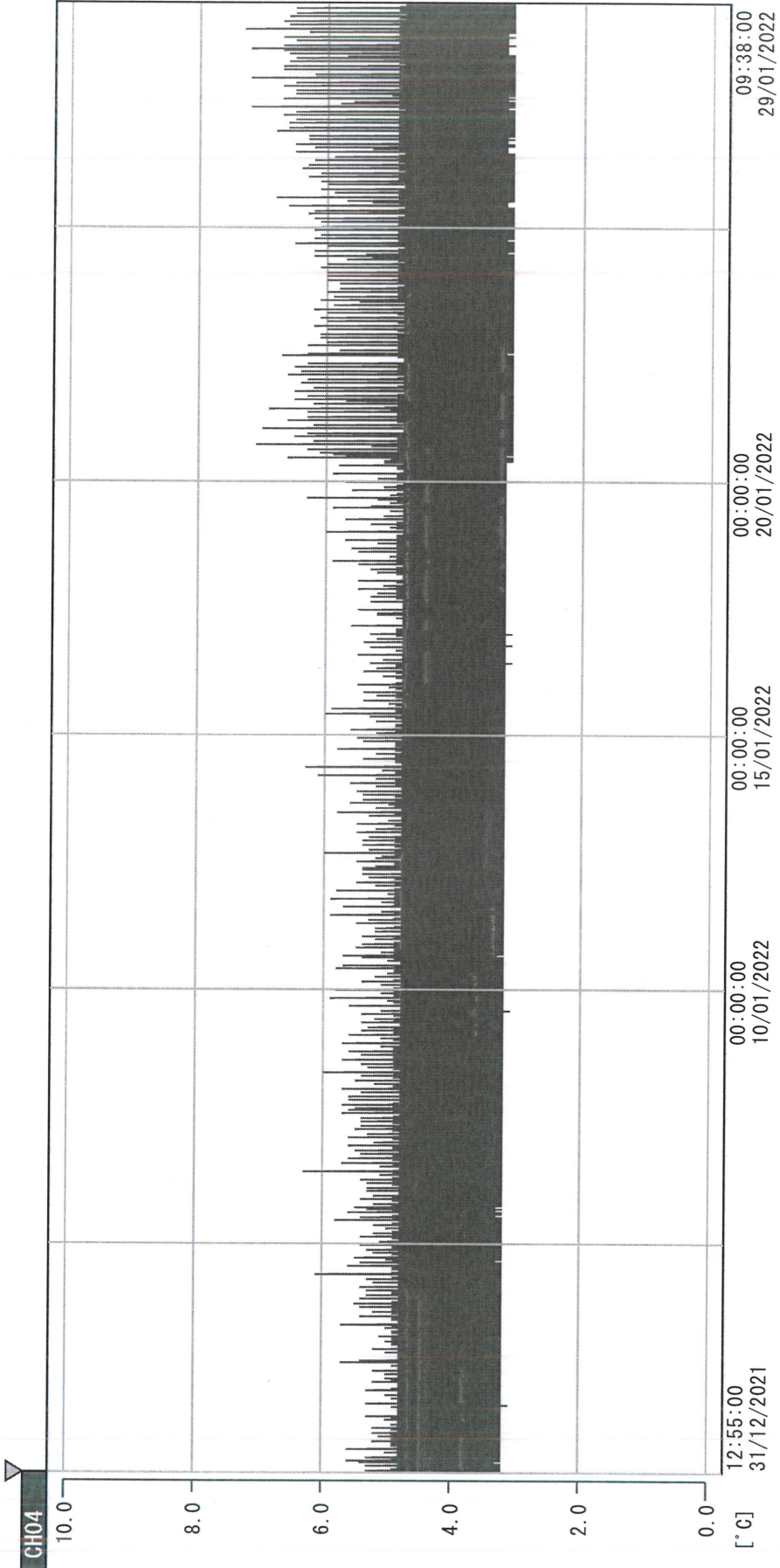
Temperature Record
Investigational Product Stored Under Refrigerated Condition (2 to 8 °C)
CH04

Model: SC-140E-CT (G1404001) TP201491

Date (DD/MM/YY)	Time (24hr)	Temperature (°C)			Signature (Initial)	Comments
		Now	Max	Min		
01 / JAN / 2022						Holiday
02 / JAN / 2022						Sunday
03 / JAN / 2022	0902	3.1	3.9	3.0	KLH	
04 / JAN / 2022	0900	3.1	4.0	3.0	SYW	
05 / JAN / 2022	0912	3.1	4.2	3.0	KLH	
06 / JAN / 2022	0903	3.1	4.2	3.0	KLH	
07 / JAN / 2022	0927	3.8	4.4	3.0	KLH	
08 / JAN / 2022	0920	3.1	4.0	3.0	KLH	
09 / JAN / 2022						Sunday
10 / JAN / 2022	0838	3.2	4.2	3.0	SYW	
11 / JAN / 2022	0902	3.1	4.1	3.0	KLH	
12 / JAN / 2022	0917	3.4	4.2	3.0	KLH	
13 / JAN / 2022	0918	3.5	4.2	3.0	KLH	
14 / JAN / 2022	0844	3.1	4.2	3.0	KLH	
15 / JAN / 2022	0919	3.3	4.4	2.1	SYW	
16 / JAN / 2022						Sunday
17 / JAN / 2022	0923	3.3	4.0	3.1	KLH	
18 / JAN / 2022	0832	3.5	3.9	3.1	KLH	
19 / JAN / 2022	0930	3.3	4.1	3.1	KLH	
20 / JAN / 2022	1022	3.2	4.2	3.0	KLH	
21 / JAN / 2022	0917	3.6	4.9	3.4	SYW	
22 / JAN / 2022	0943	3.7	4.8	3.5	YPL	
23 / JAN / 2022						Sunday
24 / JAN / 2022	0907	3.7	4.7	3.5	KLH	
25 / JAN / 2022	1002	4.5	4.6	3.5	KLH	
26 / JAN / 2022	0852	3.8	4.7	3.5	KLH	
27 / JAN / 2022	0922	3.9	4.9	3.6	KLH	
28 / JAN / 2022	0840	3.8	4.9	3.5	KLH	
29 / JAN / 2022	0835	3.6	4.9	3.5	KLH	
30 / JAN / 2022						Sunday
31 / JAN / 2022						Holiday

 Pharmacist: *Karin Lin Hwang*
 29 JAN 2022

D:\Recorder data\RAW DATA\2022\2022 Jan\211231125429\0000_211231125429.dfm
 DISP_GRP_1



31/12/2021 12:55:00

1. OPT	-22.5 [°C]	2. Multi	-27.1 [°C]	3. B1CT	19.5 [°C]	4. SC-140	4.8 [°C]
5. SC160	4.2 [°C]	6. 201SAR	3.2 [°C]	7. SC160	3.3 [°C]	8. B2CT	18.5 [°C]
TAG01	21.5 [°C]	10. KCC-3	3.9 [°C]	TAG01	-75.0 [°C]	TAG01	-75.0 [°C]

Sai Lin Huang

29 JAN 2022