

Temperature Record

Investigational Product Stored at Room Temperature (15 to 25 °C)

Model: TP201492

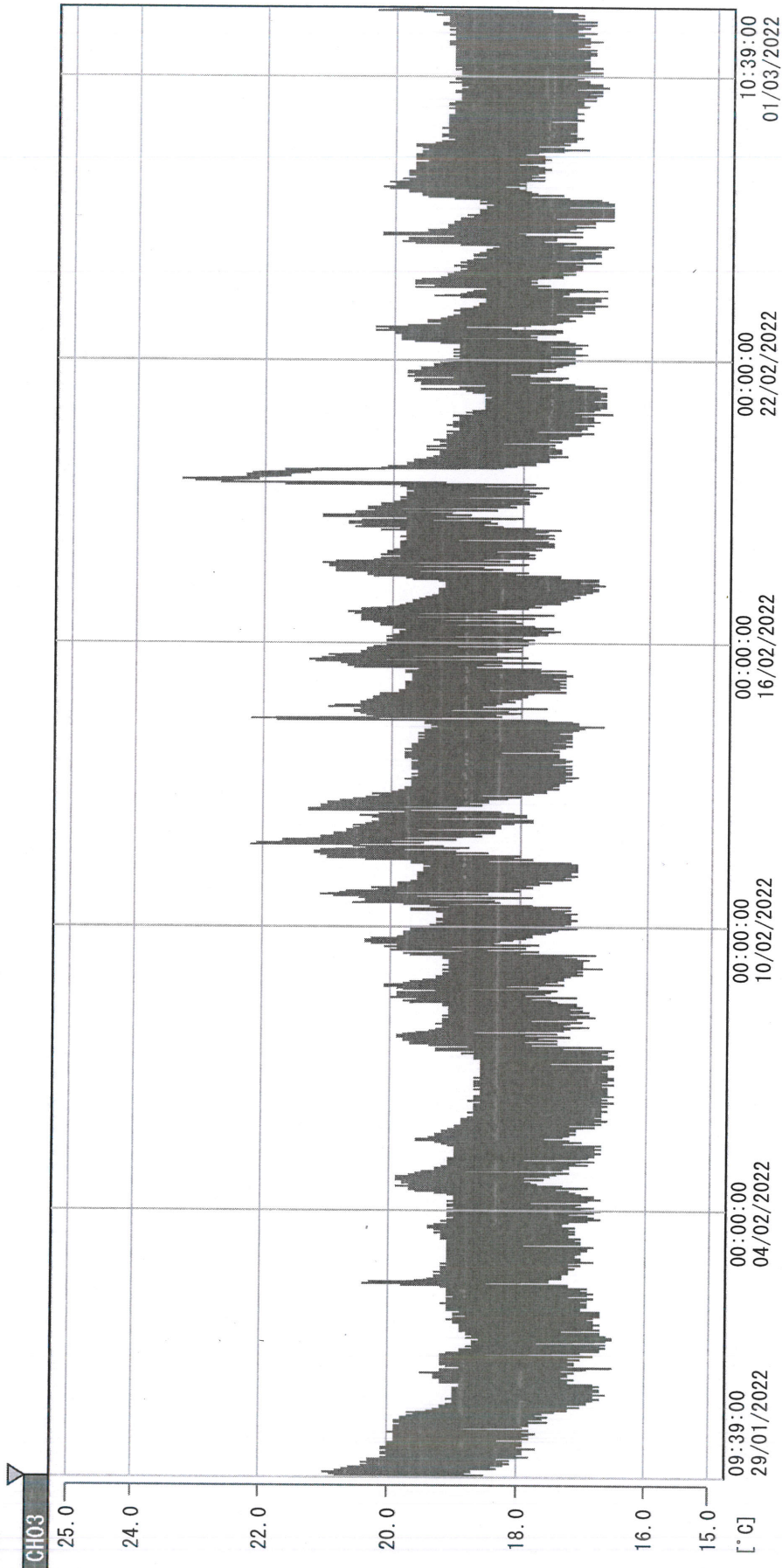
PHRCR1 (B1)

CH03

Date (DD/MM/YY)	Time (24hr)	Temperature (°C)			Signature (Initial)	Comments
		Now	Max	Min		
01 / FEB / 2022						Holiday
02 / FEB / 2022						Holiday
03 / FEB / 2022						Holiday
04 / FEB / 2022	0820	18.1	20.4	17.7	KLH	
05 / FEB / 2022	0900	17.9	19.6	17.9	KLH	
06 / FEB / 2022						Sunday
07 / FEB / 2022	0806	18.6	19.1	17.5	SW	
08 / FEB / 2022	0904	18.8	19.7	18.1	SW	
09 / FEB / 2022	0920	18.5	20.5	17.9	KLH	
10 / FEB / 2022	0922	19.1	20.2	18.2	SW	
11 / FEB / 2022	0918	19.3	20.8	18.2	KLH	
12 / FEB / 2022	0820	19.2	21.6	19.0	YPL	
13 / FEB / 2022						Sunday
14 / FEB / 2022	0903	20.3	21.0	18.0	KLH	
15 / FEB / 2022	0920	19.1	21.5	18.5	KLH	
16 / FEB / 2022	0910	19.5	21.0	18.7	KLH	
17 / FEB / 2022	0932	19.2	20.4	18.1	KLH	
18 / FEB / 2022	0848	18.9	20.6	18.8	KLH	
19 / FEB / 2022	1003	20.8	21.8	18.9	SW	
20 / FEB / 2022						Sunday
21 / FEB / 2022	0912	18.4	22.4	17.8	KLH	
22 / FEB / 2022	0925	18.7	19.9	18.2	KLH	
23 / FEB / 2022	0915	18.7	20.0	18.0	KLH	
24 / FEB / 2022	0839	18.3	19.7	18.1	KLH	
25 / FEB / 2022	0915	18.1	19.9	17.9	SW	
26 / FEB / 2022	0923	19.4	20.0	18.1	YPL	
27 / FEB / 2022						Sunday
28 / FEB / 2022						Holiday

 Pharmacist: *Dai Lin Huang*
 01 MAR 2022

D:\Recorder data\RAW DATA\2022\2022 Feb\220129093837\0000_220129093837.dlm
 DISP_GRP_1



29/01/2022 09:39:00

1. OPT	-23.8 [°C]	2. Multi	-24.2 [°C]	3. BICT	20.4 [°C]	4. SC-140	3.3 [°C]
5. SC160	3.7 [°C]	6. 201SAR	2.7 [°C]	7. SC160	4.1 [°C]	8. B2CT	19.1 [°C]
TAG01	21.7 [°C]	10. KCC-3	3.2 [°C]	TAG01	-75.0 [°C]	TAG01	-75.0 [°C]

Lai Liu Huang
 01 MAR 2022