

Temperature Record
Investigational Product Stored Under Refrigerated Condition (2 to 8 °C)
CH04

Model:SC-140E-CT (G1404001) TP201491

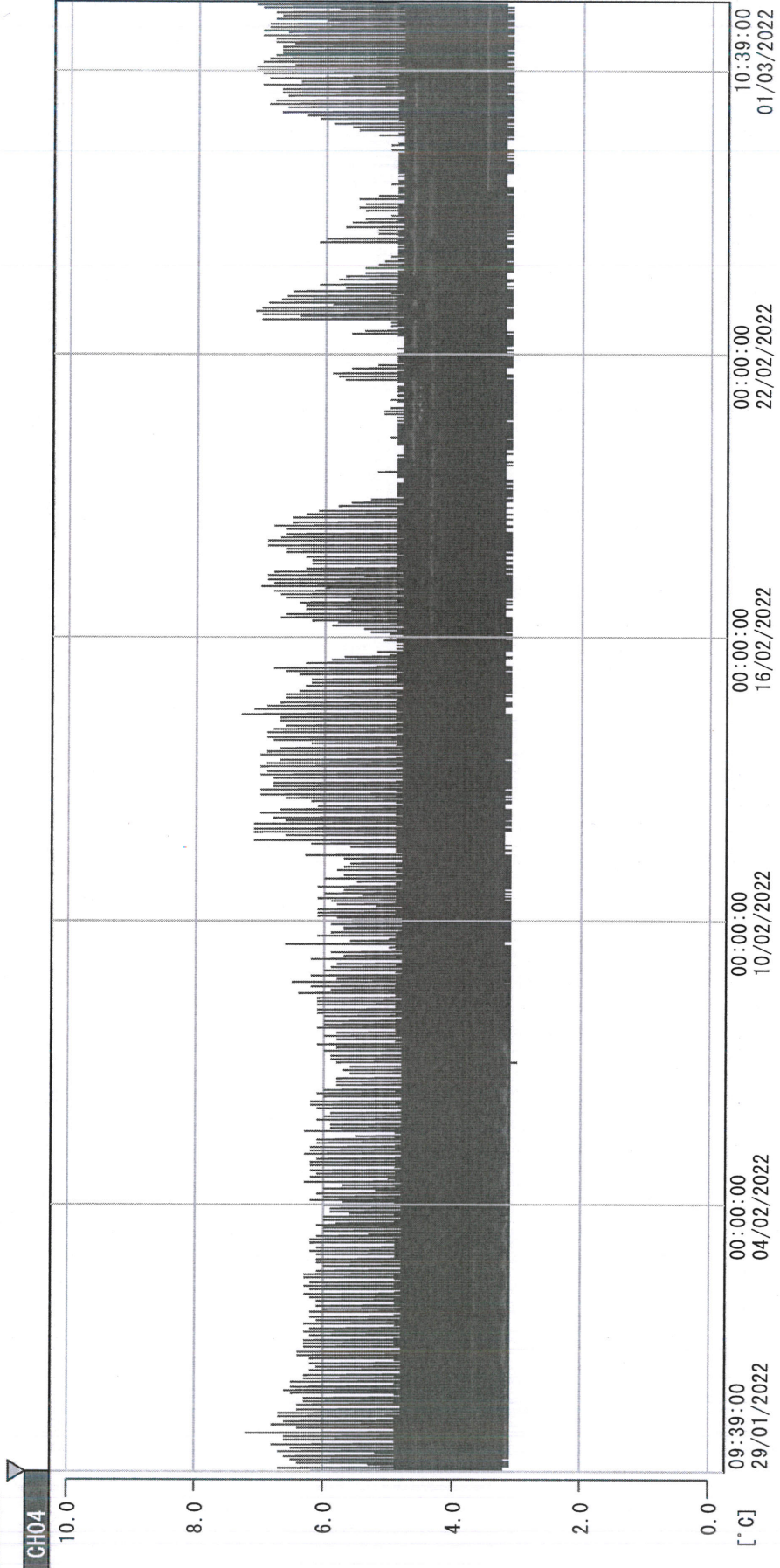
Date (DD/MM/YY)	Time (24hr)	Temperature (°C)			Signature (Initial)	Comments
		Now	Max	Min		
01 / FEB / 2022						Holiday
02 / FEB / 2022						Holiday
03 / FEB / 2022						Holiday
04 / FEB / 2022	0822	3.7	4.9	3.5	KLH	
05 / FEB / 2022	0902	4.1	4.4	3.5	KLH	
06 / FEB / 2022						Sunday
07 / FEB / 2022	0908	3.7	4.7	3.5	SYW	
08 / FEB / 2022	0908	3.9	4.4	3.5	SYW	
09 / FEB / 2022	0922	3.8	4.5	3.5	KLH	
10 / FEB / 2022	0924	3.8	4.6	3.6	SYW	
11 / FEB / 2022	0920	3.8	4.4	3.6	KLH	
12 / FEB / 2022	0834	4.2	4.9	3.5	YPL	
13 / FEB / 2022						Sunday
14 / FEB / 2022	0905	3.8	4.9	3.5	KLH	
15 / FEB / 2022	0922	3.8	5.0	3.5	KLH	
16 / FEB / 2022	0912	3.9	4.6	3.5	KLH	
17 / FEB / 2022	0934	4.0	4.9	3.6	KLH	
18 / FEB / 2022	0850	4.1	4.9	3.6	KLH	
19 / FEB / 2022	1006	4.2	5.0	3.6	KLH	
20 / FEB / 2022						Sunday
21 / FEB / 2022	0914	3.8	4.7	3.6	KLH	
22 / FEB / 2022	0927	3.9	4.5	3.7	KLH	
23 / FEB / 2022	0917	4.0	5.0	3.7	KLH	
24 / FEB / 2022	0841	4.0	4.6	3.7	KLH	
25 / FEB / 2022	0917	3.9	4.6	3.7	SYW	
26 / FEB / 2022	0940	3.9	4.2	3.8	YPL	
27 / FEB / 2022						Sunday
28 / FEB / 2022						Holiday

 Pharmacist: *Hsin Lin Huang*

01 MAR 2022

D:\Recorder data\RAW DATA\2022\Feb\20129093837\0000_220129093837.dlm

DISP_GRP_1



29/01/2022 09:39:00

1. OPT	-23.8 [°C]	2. Multi	-24.2 [°C]	3. B1CT	20.4 [°C]	4. SC-140	3.3 [°C]
5. SC160	3.7 [°C]	6. 201SAR	2.7 [°C]	7. SC160	4.1 [°C]	8. B2CT	19.1 [°C]
TAG01	21.7 [°C]	10. KCC-3	3.2 [°C]	TAG01	-75.0 [°C]	TAG01	-75.0 [°C]

David Liu Johnson
01 MAR 2022