

Temperature Record

Investigational Product Stored Under Refrigerated Condition (2 to 8 °C)

CH05

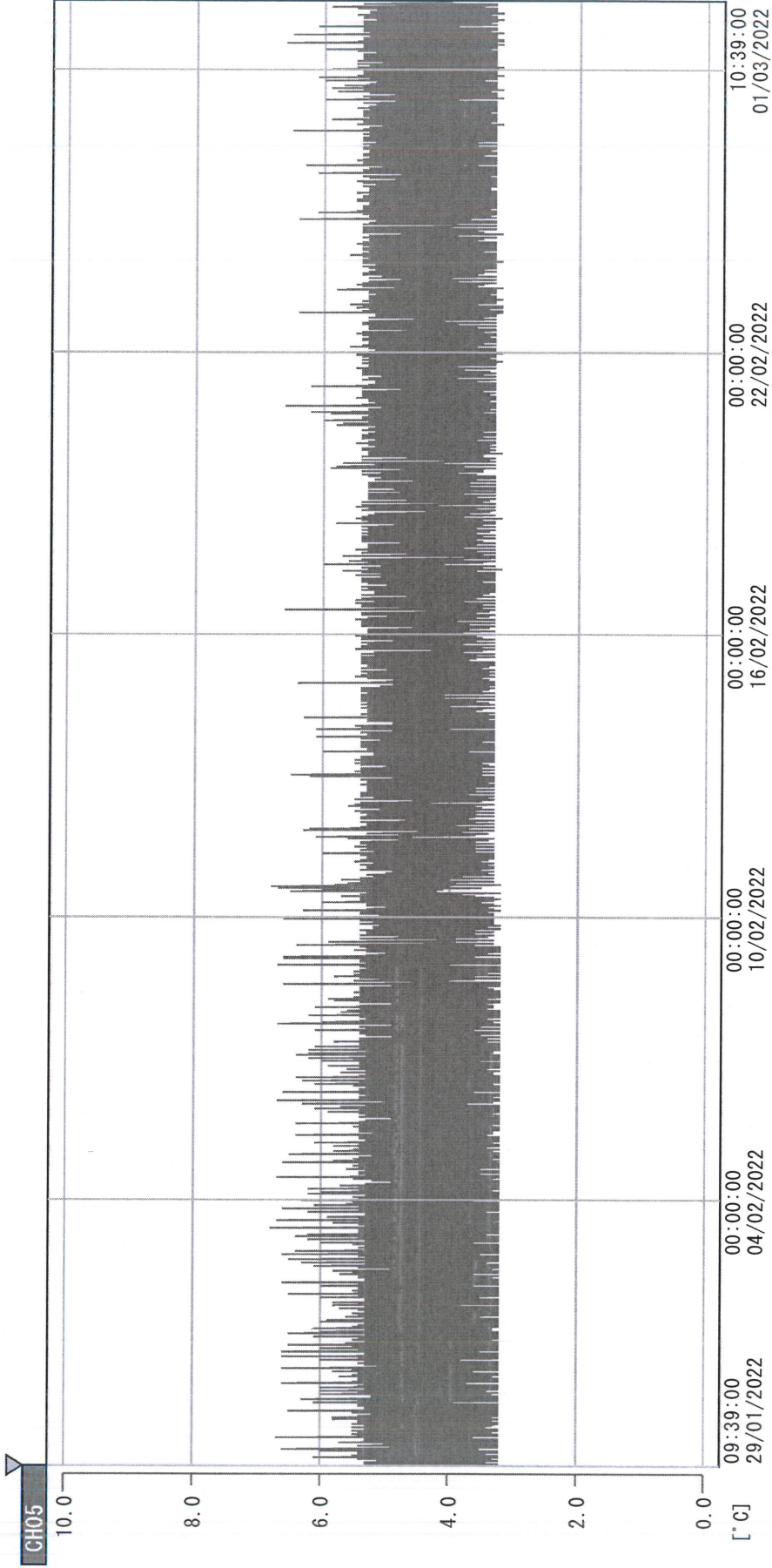
Model:SC-160E (F1222006) TP190718

Date (DD/MMM/YYYY)	Time (24hr)	Temperature (°C)			Signature (Initial)	Comments
		Now	Max	Min		
01 / FEB / 2022						Holiday
02 / FEB / 2022						Holiday
03 / FEB / 2022						Holiday
04 / FEB / 2022	0821	6.0	6.9	5.1	KLH	
05 / FEB / 2022	0901	6.6	6.9	5.2	KLH	
06 / FEB / 2022						Sunday
07 / FEB / 2022	0908	5.6	6.9	5.2	SLW	
08 / FEB / 2022	0909	5.8	6.9	5.2	SLW	
09 / FEB / 2022	0921	6.3	6.9	5.2	KLH	
10 / FEB / 2022	0923	6.1	7.0	5.3	SLW	
11 / FEB / 2022	0919	6.0	7.1	5.3	KLH	
12 / FEB / 2022	0822	6.3	7.3	5.3	YPL	
13 / FEB / 2022						Sunday
14 / FEB / 2022	0904	5.9	7.1	5.5	KLH	
15 / FEB / 2022	0921	6.2	6.7	5.2	KLH	
16 / FEB / 2022	0911	5.9	6.6	5.2	KLH	
17 / FEB / 2022	0933	6.5	7.3	5.3	KLH	
18 / FEB / 2022	0849	6.0	7.0	5.5	KLH	
19 / FEB / 2022	1005	6.5	6.8	5.4	SLW	
20 / FEB / 2022						Sunday
21 / FEB / 2022	0913	5.5	6.8	5.0	KLH	
22 / FEB / 2022	0926	5.6	6.0	5.0	KLH	
23 / FEB / 2022	0916	5.5	6.2	5.0	KLH	
24 / FEB / 2022	0840	5.5	5.9	4.9	KLH	
25 / FEB / 2022	0917	5.3	6.1	4.9	SLW	
26 / FEB / 2022	0925	5.5	6.2	5.1	YPL	
27 / FEB / 2022						Sunday
28 / FEB / 2022						Holiday

 Pharmacist: *Sai Lin Huang*

01 MAR 2022

D:\Recorder data\RAW DATA\2022\Feb\20129093837\0000_220129093837.dfm
 DISP_GRP_1



29/01/2022 09:39:00

1. OPT	-23.8 [°C]	2. Multi	-24.2 [°C]	3. B1CT	20.4 [°C]	4. SC-140	3.3 [°C]
5. SC160	3.7 [°C]	6. 201SAR	2.7 [°C]	7. SC160	4.1 [°C]	8. B2CT	19.1 [°C]
TAG01	21.7 [°C]	10. KCC-3	3.2 [°C]	TAG01	-75.0 [°C]	TAG01	-75.0 [°C]

Xai Lin Phung

01 MAR 2022