

### Temperature Record

#### Investigational Product Stored Under Refrigerated Condition (2 to 8 °C)

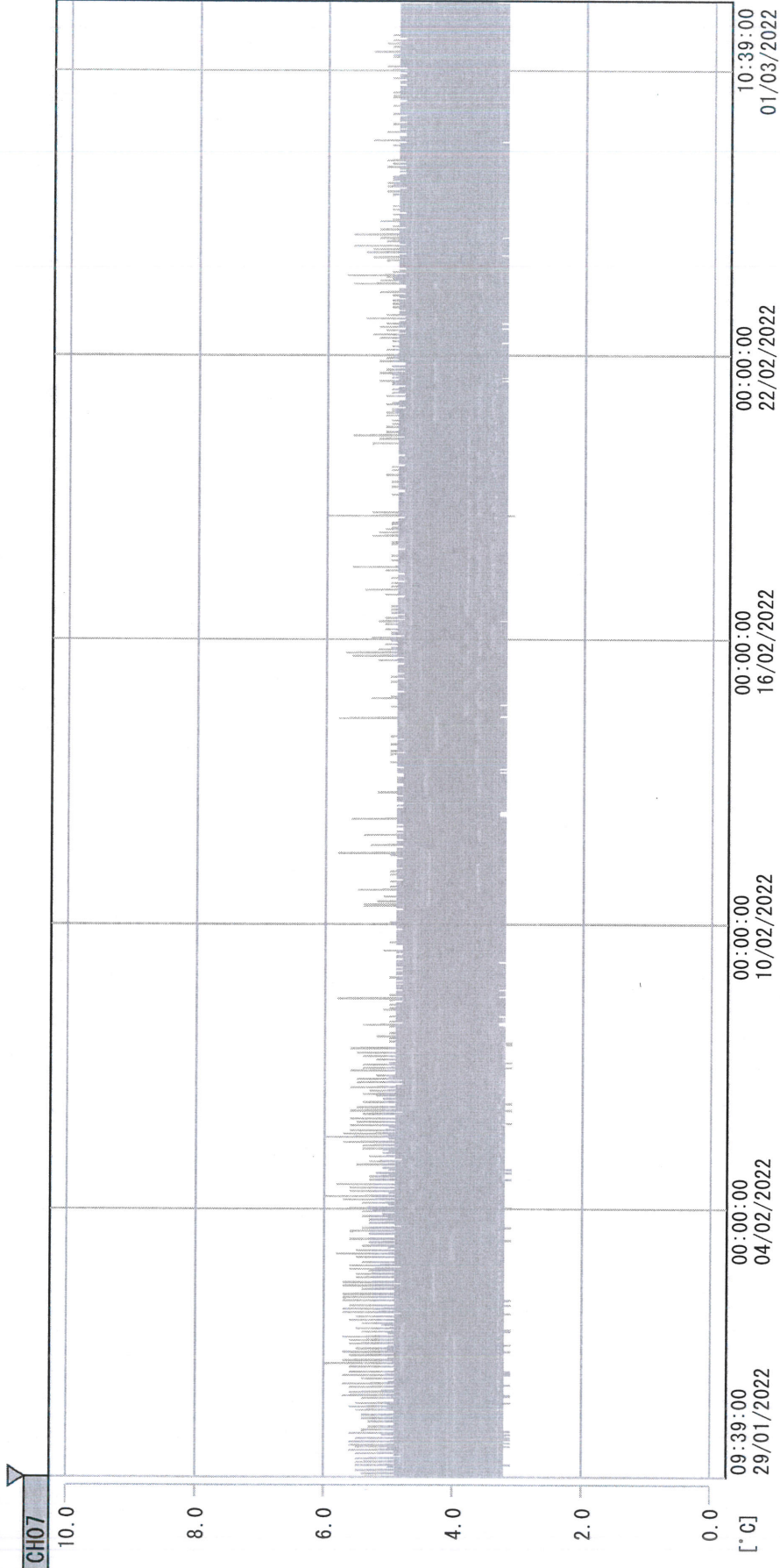
**CH07**

B2 Model: TP200650    Model: SC-160E H1224001

Date (DD/MMM/YYYY)	Time (24hr)	Temperature (°C)			Signature (Initial)	Comments
		Now	Max	Min		
01 / FEB / 2022						Holiday
02 / FEB / 2022						Holiday
03 / FEB / 2022						Holiday
04 / FEB / 2022	1211	4.1	5.0	3.8	KLH	
05 / FEB / 2022	1012	4.2	4.9	3.8	KLH	
06 / FEB / 2022						Sunday
07 / FEB / 2022	0948	3.9	5.0	3.8	SYW	
08 / FEB / 2022	1128	4.3	4.8	3.8	FW	
09 / FEB / 2022	1024	4.3	4.4	3.9	KLH	
10 / FEB / 2022	1004	4.1	4.5	3.9	KLH	
11 / FEB / 2022	1129	4.2	4.6	3.9	KLH	
12 / FEB / 2022	1046	4.0	4.7	3.9	SYW	
13 / FEB / 2022						Sunday
14 / FEB / 2022	1518	4.2	4.9	3.9	KLH	
15 / FEB / 2022	1008	4.1	4.5	3.9	KLH	
16 / FEB / 2022	0943	4.1	4.8	3.9	KLH	
17 / FEB / 2022	0947	4.2	4.6	3.9	KLH	
18 / FEB / 2022	1107	4.0	4.8	3.9	KLH	
19 / FEB / 2022	1027	4.0	4.5	3.9	SYW	
20 / FEB / 2022						Sunday
21 / FEB / 2022	1542	4.2	4.7	3.9	KLH	
22 / FEB / 2022	1620	4.0	4.5	3.9	KLH	
23 / FEB / 2022	1158	4.2	4.7	3.9	KLH	
24 / FEB / 2022	1005	4.0	4.8	3.9	KLH	
25 / FEB / 2022	1359	4.0	4.7	3.9	SYW	
26 / FEB / 2022	1147	4.0	4.4	3.9	YPL	
27 / FEB / 2022						Sunday
28 / FEB / 2022						Holiday

 Pharmacist: *Mai Lin Huang*  
 01 MAR 2022

D:\Recorder data\RAW DATA\2022\Feb\220129093837\0000\_220129093837.dm  
 DISP\_GRP\_1



29/01/2022 09:39:00

1. OPT	-23.8 [°C]	2. Multi	-24.2 [°C]	3. B1CT	20.4 [°C]	4. SC-140	3.3 [°C]
5. SC160	3.7 [°C]	6. 201SAR	2.7 [°C]	7. SC160	4.1 [°C]	8. B2CT	19.1 [°C]
TAG01	21.7 [°C]	10. KCC-3	3.2 [°C]	TAG01	-75.0 [°C]	TAG01	-75.0 [°C]

*Sai Lin Huang*  
 01 MAR 2022