

Temperature Record
Investigational Product Stored at Room Temperature (15 to 25 °C)
CH08

PHRCR2 (B2) model: TP191560

Date (DD/MM/YY)	Time (24hr)	Temperature (°C)			Signature (Initial)	Comments
		Now	Max	Min		
01 / FEB / 2022						Holiday
02 / FEB / 2022						Holiday
03 / FEB / 2022						Holiday
04 / FEB / 2022	1213	18.8	19.0	17.9	KLH	
05 / FEB / 2022	1014	18.7	18.9	18.1	KLH	
06 / FEB / 2022						Sunday
07 / FEB / 2022	0952	18.7	18.9	17.8	SYW	
08 / FEB / 2022	1127	18.8	19.1	17.4	SYW	
09 / FEB / 2022	1026	18.9	18.9	17.8	KLH	
10 / FEB / 2022	1006	19.3	19.3	17.9	KLH	
11 / FEB / 2022	1131	19.3	19.7	17.9	KLH	
12 / FEB / 2022	1048	19.0	19.4	18.1	SYW	
13 / FEB / 2022						Sunday
14 / FEB / 2022	1520	18.7	19.0	17.9	KLH	
15 / FEB / 2022	1010	18.9	19.2	17.9	KLH	
16 / FEB / 2022	0945	18.8	19.2	17.9	KLH	
17 / FEB / 2022	0949	18.6	19.0	17.9	KLH	
18 / FEB / 2022	1109	18.8	19.1	17.9	KLH	
19 / FEB / 2022	1029	18.7	19.4	17.8	SYW	
20 / FEB / 2022						Sunday
21 / FEB / 2022	1544	18.5	19.0	17.8	KLH	
22 / FEB / 2022	1622	18.6	18.9	17.9	KLH	
23 / FEB / 2022	1200	18.7	18.8	17.8	KLH	
24 / FEB / 2022	1007	18.7	19.0	17.9	KLH	
25 / FEB / 2022	1401	18.2	18.8	17.8	SYW	
26 / FEB / 2022	1145	18.4	18.7	17.8	YPL	
27 / FEB / 2022						Sunday
28 / FEB / 2022						Holiday

 Pharmacist: *Dai Lin Huang*

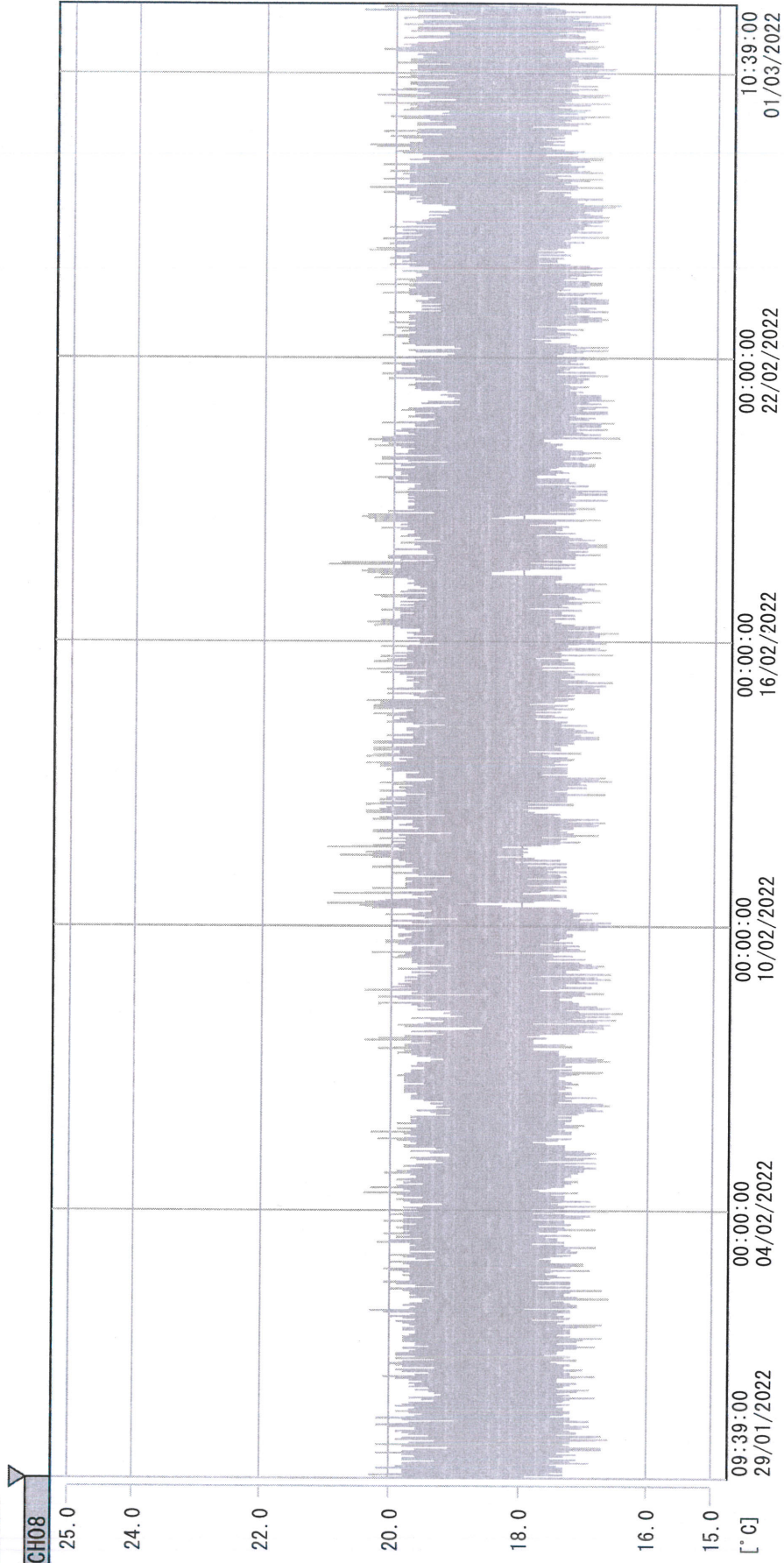
01 MAR 2022

Page 1

(From JUN/2012 v0.4)

D:\Recorder data\RAW DATA\2022\Feb\220129093837\0000_220129093837.dm

DISP_GRP_1



29/01/2022 09:39:00

1. OPT	-23.8 [°C]	2. Multi	-24.2 [°C]	3. BICT	20.4 [°C]	4. SC-140	3.3 [°C]
5. SC160	3.7 [°C]	6. 201SAR	2.7 [°C]	7. SC160	4.1 [°C]	8. B2CT	19.1 [°C]
TAG01	21.7 [°C]	10. KCC-3	3.2 [°C]	TAG01	-75.0 [°C]	TAG01	-75.0 [°C]

David Lin / Hung

01 MAR 2022