

Temperature Record

Investigational Product Stored Under Refrigerated Condition (2 to 8 °C)

CH10

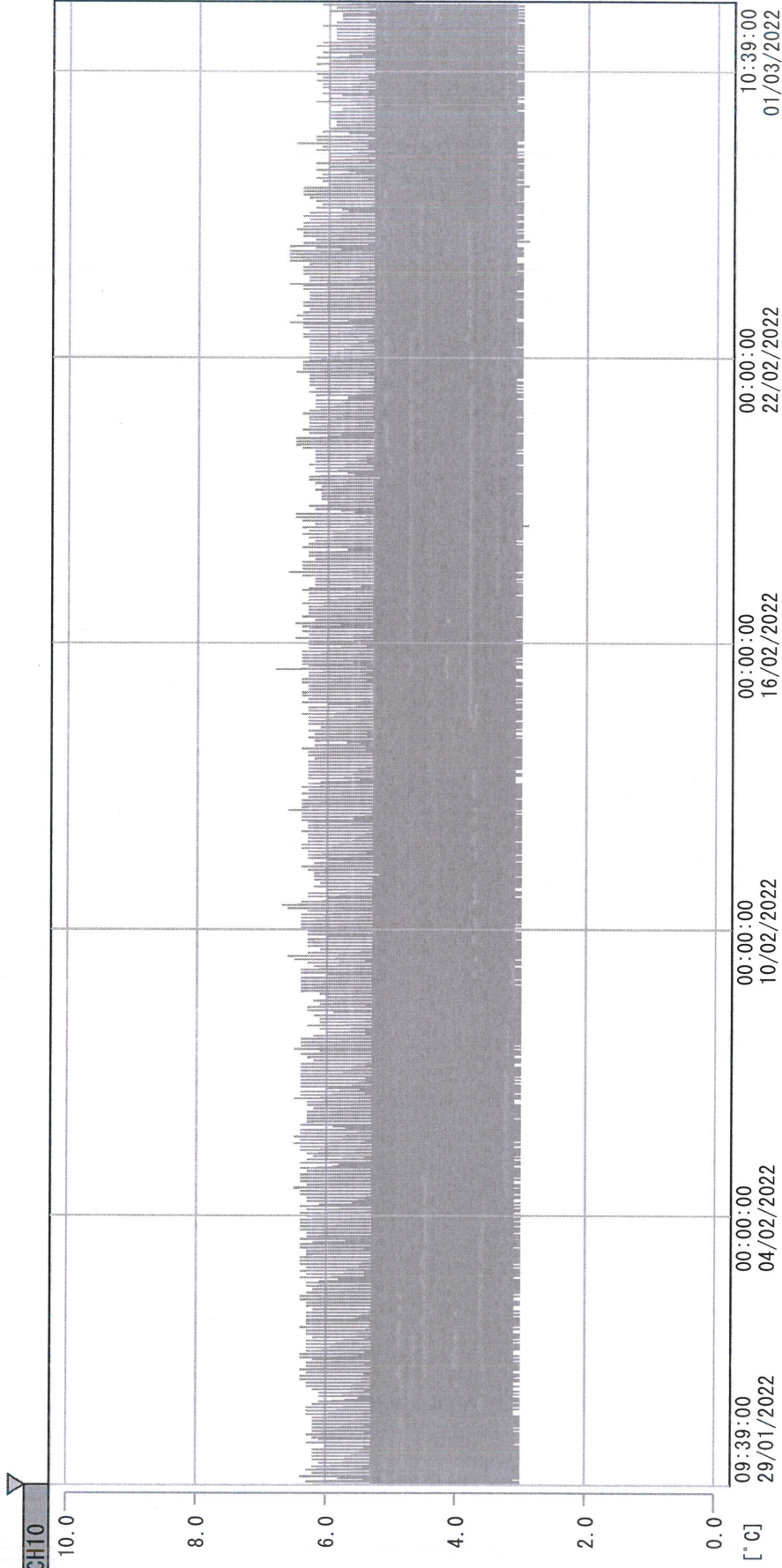
B2 Model: KCC3 TP 190672

Date (DD/MM/YY)	Time (24hr)	Temperature (°C)			Signature (Initial)	Comments
		Now	Max	Min		
01 / FEB / 2022						Holiday
02 / FEB / 2022						Holiday
03 / FEB / 2022						Holiday
04 / FEB / 2022	1212	5.4	6.4	4.8	KLH	
05 / FEB / 2022	1013	5.1	6.4	5.0	KLH	
06 / FEB / 2022						Sunday
07 / FEB / 2022	0941	5.5	6.5	5.1	SYW	
08 / FEB / 2022	1529	5.4	6.5	5.1	SYW	
09 / FEB / 2022	1025	6.1	6.2	5.2	KLH	
10 / FEB / 2022	1005	5.6	6.7	5.2	KLH	
11 / FEB / 2022	1130	5.9	6.8	5.2	KLH	
12 / FEB / 2022	1049	5.6	6.2	5.2	SYW	
13 / FEB / 2022						Sunday
14 / FEB / 2022	1519	5.9	6.7	5.3	KLH	
15 / FEB / 2022	1009	5.7	6.7	5.3	KLH	
16 / FEB / 2022	0944	6.5	7.0	5.4	KLH	
17 / FEB / 2022	0948	5.9	6.8	5.4	KLH	
18 / FEB / 2022	1108	6.1	6.9	5.4	KLH	
19 / FEB / 2022	1029	6.0	6.9	5.5	SYW	
20 / FEB / 2022						Sunday
21 / FEB / 2022	1543	5.6	6.9	5.5	KLH	
22 / FEB / 2022	1621	5.6	7.0	5.5	KLH	
23 / FEB / 2022	1159	5.2	6.8	5.2	KLH	
24 / FEB / 2022	1006	5.7	6.9	5.2	KLH	
25 / FEB / 2022	1400	5.6	6.8	5.1	SYW	
26 / FEB / 2022	1148	6.0	6.8	5.2	YPL	
27 / FEB / 2022						Sunday
28 / FEB / 2022						Holiday

 Pharmacist: *Dai Lin Hung*
 01 MAR 2022

D:\Recorder data\RAW DATA\2022\2022 Feb\220129093837\0000_220129093837.dm

DISP_GRP_1



29/01/2022 09:39:00

1. OPT	-23.8 [°C]	2. Multi	-24.2 [°C]	3. B1CT	20.4 [°C]	4. SC-140	3.3 [°C]
5. SC160	3.7 [°C]	6. 201SAR	2.7 [°C]	7. SC160	4.1 [°C]	8. B2CT	19.1 [°C]
TAG01	21.7 [°C]	10. KCC-3	3.2 [°C]	TAG01	-75.0 [°C]	TAG01	-75.0 [°C]

Don Lin Hung

01 MAR 2022