

Temperature Record

Investigational Product Stored Under Refrigerated Condition (2 to 8 °C)

Transfer to TP211307 since 13 APR 2022 KLH

B2 Model: TP200650 Model: SC-160E H1224001

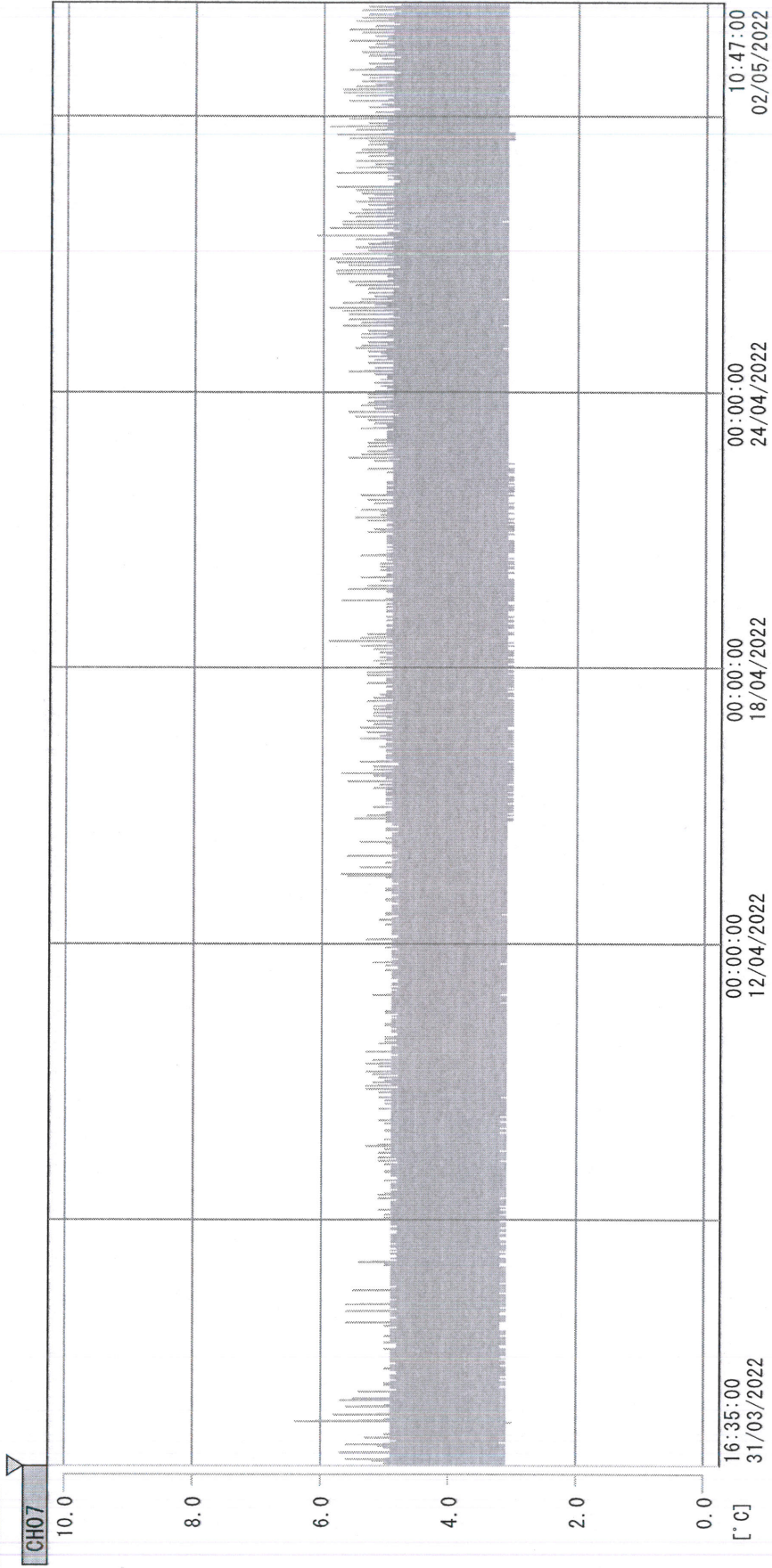
CH07

Date (DD/MMM/YYYY)	Time (24hr)	Temperature (°C)			Signature (Initial)	Comments
		Now	Max	Min		
01 / APR / 2022	1455	4.6	5.5	4.4	KLH	
02 / APR / 2022	1108	4.8	5.8	4.5	KLH	
03 / APR / 2022						Sunday
04 / APR / 2022						Holiday
05 / APR / 2022						Holiday
06 / APR / 2022	1216	5.2	5.7	4.7	KLH	
07 / APR / 2022	1445	5.3	5.6	4.8	KLH	
08 / APR / 2022	1522	5.2	5.5	4.9	KLH	
09 / APR / 2022	1144	5.5	5.7	5.0	KLH	
10 / APR / 2022						Sunday
11 / APR / 2022	0932	5.4	5.8	5.0	KLH	
12 / APR / 2022	0950	5.6	5.8	5.1	KLH	
13 / APR / 2022	1451	5.5	6.2	5.1	KLH	
14 / APR / 2022	1527	5.5	6.1	5.1	SYW	
15 / APR / 2022	1054	5.5	5.8	5.1	SYW	
16 / APR / 2022	1045	4.3	6.0	4.1	SYW	
17 / APR / 2022						Sunday
18 / APR / 2022	1132	4.3	4.6	4.1	KLH	
19 / MAR / 2022	1019	4.1	5.0	4.0	KLH	
20 / APR / 2022	1002	4.1	4.8	4.0	KLH	
21 / APR / 2022	1032	4.1	4.7	4.0	KLH	
22 / APR / 2022	1534	4.7	4.7	4.0	SYW	
23 / APR / 2022	1100	4.2	4.7	4.0	SYW	
24 / APR / 2022						Sunday
25 / APR / 2022	0944	4.2	4.8	4.0	KLH	
26 / APR / 2022	0944	4.2	5.0	4.0	KLH	
27 / APR / 2022	1021	4.3	5.0	4.0	KLH	
28 / APR / 2022	1511	4.4	5.0	4.0	KLH	
29 / APR / 2022	1504	4.1	4.9	4.0	KLH	
30 / APR / 2022	11:42	4.1	5.0	4.0	KLH	

Pharmacist: *Lai Lin Huang*
 02 MAY 2022

D:\Recorder data\RAW DATA\2022\2022 Apr\220331163444\0000_220331163444.dm

DISP_GRP_1



31/03/2022 16:35:00

1. OPT	-21.9 [°C]	2. Multi	-22.9 [°C]	3. BICT	21.6 [°C]	4. SC-140	4.1 [°C]
5. SC160	3.6 [°C]	6. 201SAR	4.0 [°C]	7. SC160	3.5 [°C]	8. B2CT	19.3 [°C]
TAG01	22.8 [°C]	10. KCC-3	3.4 [°C]	TAG01	-75.0 [°C]	TAG01	-75.0 [°C]

doi jin hwan

02 MAY 2022