

### Temperature Record

#### Investigational Product Stored at Room Temperature (15 to 25 °C)

Transfer to TP211318 since 13 APR 2022 KLI

CH08

PHRCR2 (B2) model: TP191560

Date (DD/MM/YY)	Time (24hr)	Temperature (°C)			Signature (Initial)	Comments
		Now	Max	Min		
01 / APR / 2022	1457	18.9	19.4	17.7	KLI	
02 / APR / 2022	1110	18.6	19.1	18.0	KLI	
03 / APR / 2022						Sunday
04 / APR / 2022						Holiday
05 / APR / 2022						Holiday
06 / APR / 2022	1218	19.1	19.2	17.5	KLI	
07 / APR / 2022	1447	18.5	19.3	17.9	KLI	
08 / APR / 2022	1524	18.7	19.1	17.8	KLI	
09 / APR / 2022	1146	18.8	19.2	18.1	KLI	
10 / APR / 2022						Sunday
11 / APR / 2022	0934	18.9	19.4	18.0	KLI	
12 / APR / 2022	0952	19.4	19.5	18.1	KLI	
13 / APR / 2022	1453	19.9	20.2	18.2	KLI	
14 / APR / 2022	1529	19.6	20.0	18.2	SYW	
15 / APR / 2022	1055	19.8	20.4	18.1	SYW	
16 / APR / 2022	1046	18.8	20.4	18.2	SYW	
17 / APR / 2022						Sunday
18 / APR / 2022	1134	19.0	19.3	17.9	KLI	
19 / MAR / 2022	1021	19.2	20.1	17.9	KLI	
20 / APR / 2022	1004	19.4	19.6	18.1	KLI	
21 / APR / 2022	1034	19.7	19.7	18.1	KLI	
22 / APR / 2022	1536	18.8	19.8	18.1	SYW	
23 / APR / 2022	1102	19.0	19.2	18.3	SYW	
24 / APR / 2022						Sunday
25 / APR / 2022	0949	19.5	19.5	18.2	KLI	
26 / APR / 2022	0946	19.7	20.0	18.6	KLI	
27 / APR / 2022	1023	20.5	20.5	18.7	KLI	
28 / APR / 2022	1513	20.6	20.8	18.6	KLI	
29 / APR / 2022	1506	19.8	20.8	18.6	KLI	
30 / APR / 2022	1144	19.1	20.1	18.4	KLI	

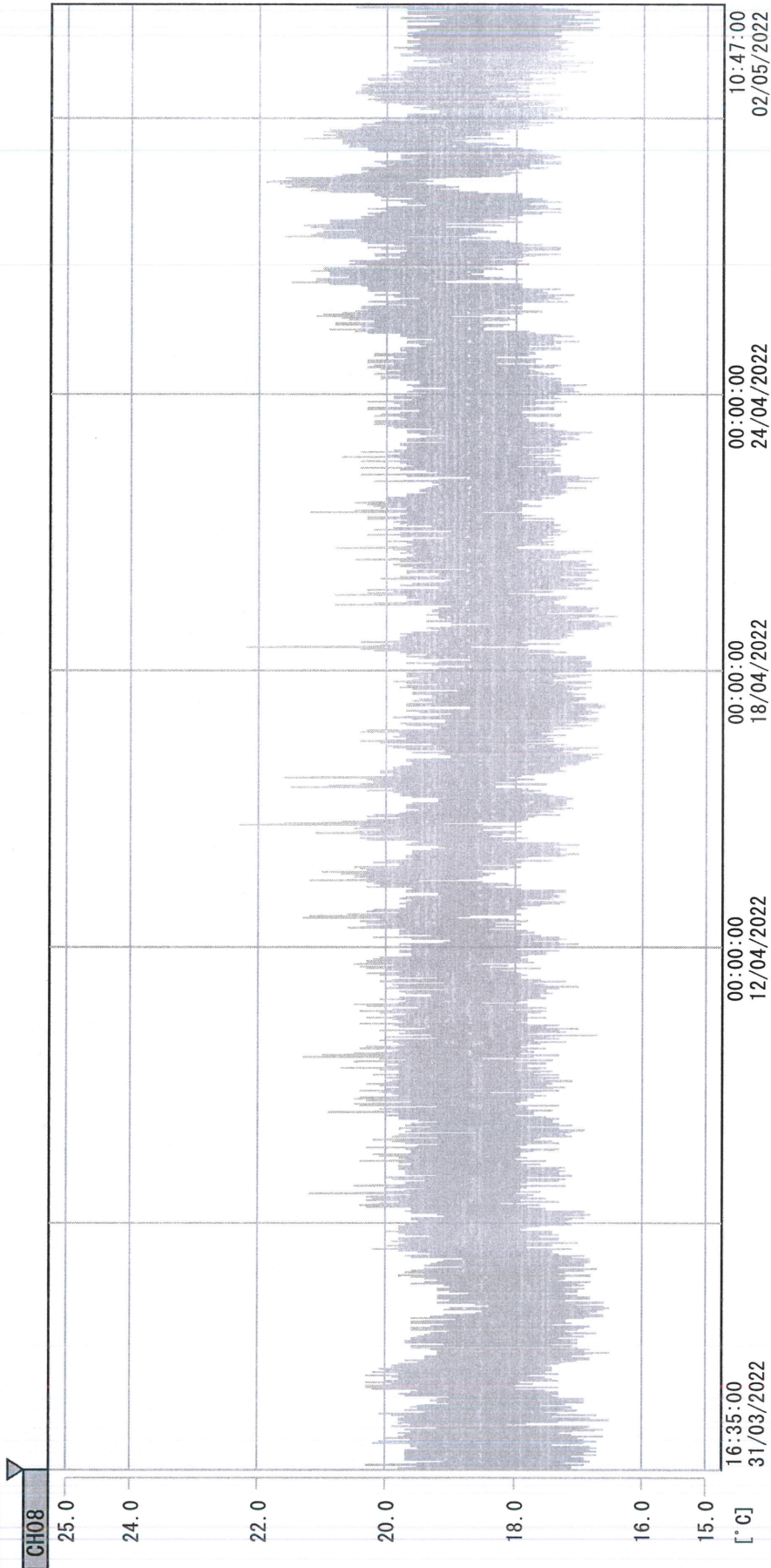
Pharmacist: *Kai Lin Huang*

02 MAY 2022

Page 1

(From JUN/2012 v0.4)

D:\Recorder data\RAW DATA\2022\2022 Apr\220331163444\0000\_220331163444.dfm  
 DISP\_GRP\_1



31/03/2022 16:35:00

1. OPT	-21.9 [°C]	2. Multi	-22.9 [°C]	3. B1CT	21.6 [°C]	4. SC-140	4.1 [°C]
5. SC160	3.6 [°C]	6. 201SAR	4.0 [°C]	7. SC160	3.5 [°C]	8. B2CT	19.3 [°C]
TAG01	22.8 [°C]	10. KCC-3	3.4 [°C]	TAG01	-75.0 [°C]	TAG01	-75.0 [°C]

*Sai Lin Idung*

02 MAY 2022