

Temperature Record

Investigational Product Stored at Room Temperature (15 to 25 °C)

Model: TP211283

PHRCR1 (B1)

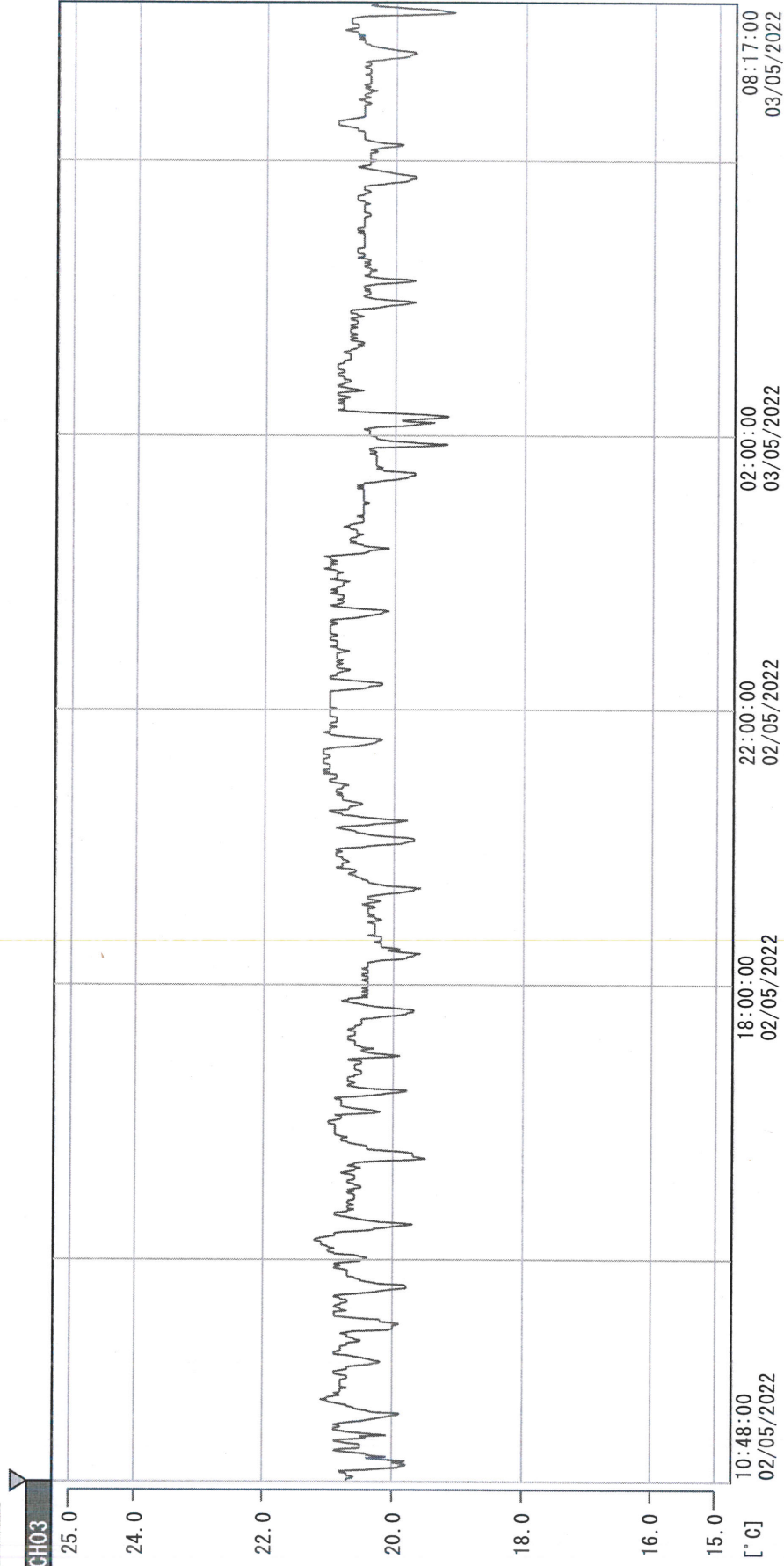
CH03

Date (DD/MM/YY)	Time (24hr)	Temperature (°C)			Signature (Initial)	Comments
		Now	Max	Min		
01 / MAY / 2022						Sunday
02 / MAY / 2022	0956	21.0	21.8	20.4	KLH	
03 / MAY / 2022	0815	21.3	21.5	20.4	KLH	
04 / MAY / 2022	0913	20.4	22.0	20.4	KLH	
05 / MAY / 2022	0930	22.4	22.9	20.4	KLH	
06 / MAY / 2022	0952	21.7	22.5	20.8	YPL	
07 / MAY / 2022	0918	21.1	21.8	20.5	KLH	
08 / MAY / 2022						Sunday
09 / MAY / 2022	0935	22.3	22.7	20.4	KLH	
10 / MAY / 2022	0916	21.3	22.4	20.8	KLH	
11 / MAY / 2022	0919	22.1	22.7	21.1	KLH	
12 / MAY / 2022	0915	23.0	23.0	21.1	KLH	
13 / MAY / 2022	0926	21.5	23.1	20.9	KLH	
14 / MAY / 2022	0842	21.3	22.6	21.1	KLH	
15 / MAY / 2022						Sunday
16 / MAY / 2022	0932	21.2	22.1	20.7	SYW	
17 / MAY / 2022	0940	21.2	22.1	20.5	KLH	
18 / MAY / 2022	0914	21.5	22.3	20.2	KLH	
19 / MAY / 2022	0921	21.3	22.2	20.5	KLH	
20 / MAY / 2022	0833	21.1	22.4	20.8	YPL	
21 / MAY / 2022	0822	20.6	21.8	19.9	YPL	
22 / MAY / 2022						Sunday
23 / MAY / 2022	0841	22.1	22.2	20.4	KLH	
24 / MAY / 2022	0905	22.1	21.8	21.3	KLH	
25 / MAY / 2022	0832	22.2	23.6	21.3	KLH	
26 / MAY / 2022	1029	22.9	22.9	21.2	KLH	
27 / MAY / 2022	0912	22.5	23.1	21.4	SYW	
28 / MAY / 2022	0951	22.3	22.7	21.1	KLH	
29 / MAY / 2022						Sunday
30 / MAY / 2022	0907	22.4	23.1	21.3	KLH	
31 / MAY / 2022	0950	23.5	24.0	22.3	KLH	

 Pharmacist: *Hai Lin Huang*
 31 MAY 2022

D:\Recorder data\RAW DATA\2022\2022 May\220502104740\0000_220502104740.dm

DISP_GRP_1



02/05/2022 10:48:00

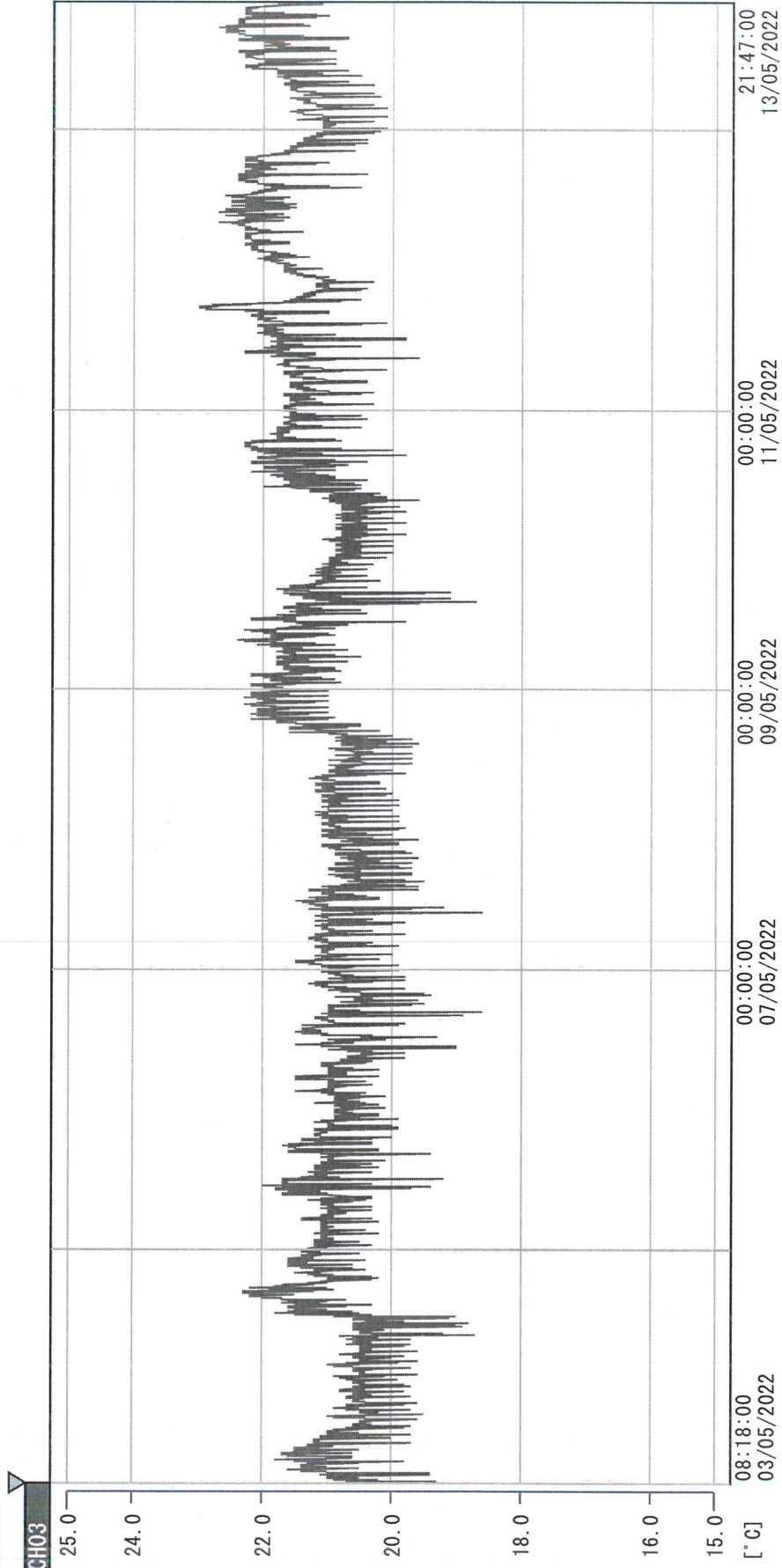
1. OPT	-21.8 [°C]	2. Multi	-22.8 [°C]	3. B1CT	20.7 [°C]	4. SC-140	6.9 [°C]
5. SC160	4.7 [°C]	6. 201SAR	3.4 [°C]	7. SC160	4.2 [°C]	8. B2CT	18.6 [°C]
TAG01	22.4 [°C]	10. KCC-3	3.7 [°C]	TAG01	-75.0 [°C]	TAG01	-75.0 [°C]

Xai Lin /strong

31 MAY 2022

D:\Recorder data\RAW DATA\2022\2022 May\220503081708\0000_220503081708.dlm

DISP GRP 1



03/05/2022 08:18:00

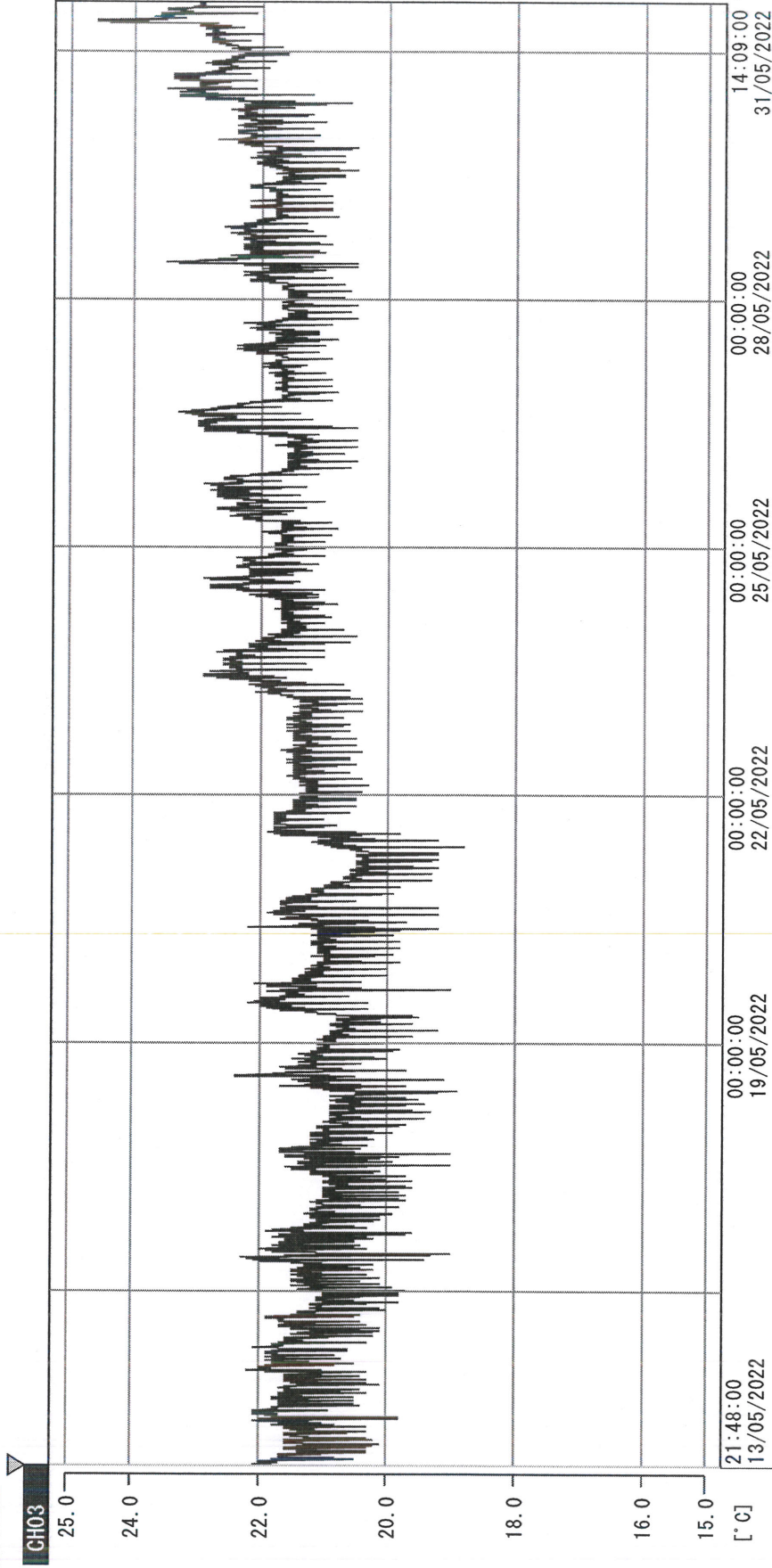
1. OPT	-22.8 [°C]	2. Multi	-27.4 [°C]	3. B1CT	20.3 [°C]	4. SC-140	5.0 [°C]
5. SC160	5.2 [°C]	6. 201SAR	2.9 [°C]	7. SC160	4.6 [°C]	8. B2CT	17.6 [°C]
TAG01	21.7 [°C]	10. KCC-3	5.7 [°C]	TAG01	-75.0 [°C]	TAG01	-75.0 [°C]

Xai Lin Hong

31 MAY 2022

D:\Recorder data\RAW DATA\2022\2022 May\220513214743\0000_220513214743.dlm

DISP_GRP_1



Time	Temperature [°C]	Channel
13/05/2022 21:48:00	-21.5	1. OPT
	5.7	5. SC160
	22.3	TAG01
		2. Multi
		6. 201SAR
		10. KCC-3
00:00:00 19/05/2022	-23.6	3. B1CI
	3.8	7. SC160
	4.8	TAG01
00:00:00 22/05/2022		
00:00:00 25/05/2022	20.5	4. SC-140
	5.1	8. B2CI
	-75.0	TAG01
00:00:00 28/05/2022		
00:00:00 31/05/2022	6.5	
	19.1	
	-75.0	

Lai Lin Huang
31 MAY 2022