

Temperature Record
Investigational Product Stored at Room Temperature (15 to 25 °C)

Model: TP211283

PHRCR1 (B1)

CH03

Date (DD/MMM/YYYY)	Time (24hr)	Temperature (°C)			Signature (Initial)	Comments
		Now	Max	Min		
01 / JUN / 2022	0955	22.6	23.8	21.7	KLH	
02 / JUN / 2022	0905	22.2	22.9	21.3	SYW	
03 / JUN / 2022						Holiday
04 / JUN / 2022						Holiday
05 / JUN / 2022						Sunday
06 / JUN / 2022	0909	21.9	23.8	21.1	KLH	
07 / JUN / 2022	0926	21.8	22.9	21.4	KLH	
08 / JUN / 2022	0848	21.8	23.3	21.3	SYW	
09 / JUN / 2022	0856	21.9	23.3	21.3	KLH	
10 / JUN / 2022	0938	21.9	22.6	21.1	KLH	
11 / JUN / 2022	0813	22.0	22.6	21.1	KLH	
12 / JUN / 2022						Sunday
13 / JUN / 2022	1100	22.3	22.4	20.9	KLH	
14 / JUN / 2022	0924	21.9	22.8	21.4	KLH	
15 / JUN / 2022	0900	22.0	22.9	21.4	KLH	
16 / JUN / 2022	0909	22.7	22.9	21.8	SYW	
17 / JUN / 2022	0848	21.9	23.5	21.3	KLH	
18 / JUN / 2022	0905	22.3	22.8	21.3	KLH	
19 / JUN / 2022						Sunday
20 / JUN / 2022	0929	22.4	23.0	21.4	KLH	
21 / JUN / 2022	0912	23.3	23.7	22.1	KLH	
22 / JUN / 2022	0931	23.2	23.5 23.7 KLH	22.0 22 JUN 2022	KLH	
23 / JUN / 2022	10:03	23.3	23.7	22.0	KLH	
24 / JUN / 2022	0911	22.4	24.4	21.9	SYW	
25 / JUN / 2022	0822	22.2	23.6	21.7	YPL	
26 / JUN / 2022						Sunday
27 / JUN / 2022	0851	21.6	22.7	20.9	KLH	
28 / JUN / 2022	0910	23.4	23.8	21.7	KLH	
29 / JUN / 2022	0932	22.9	23.6	21.8	KLH	
30 / JUN / 2022	0911	21.8	23.7	21.6	KLH	

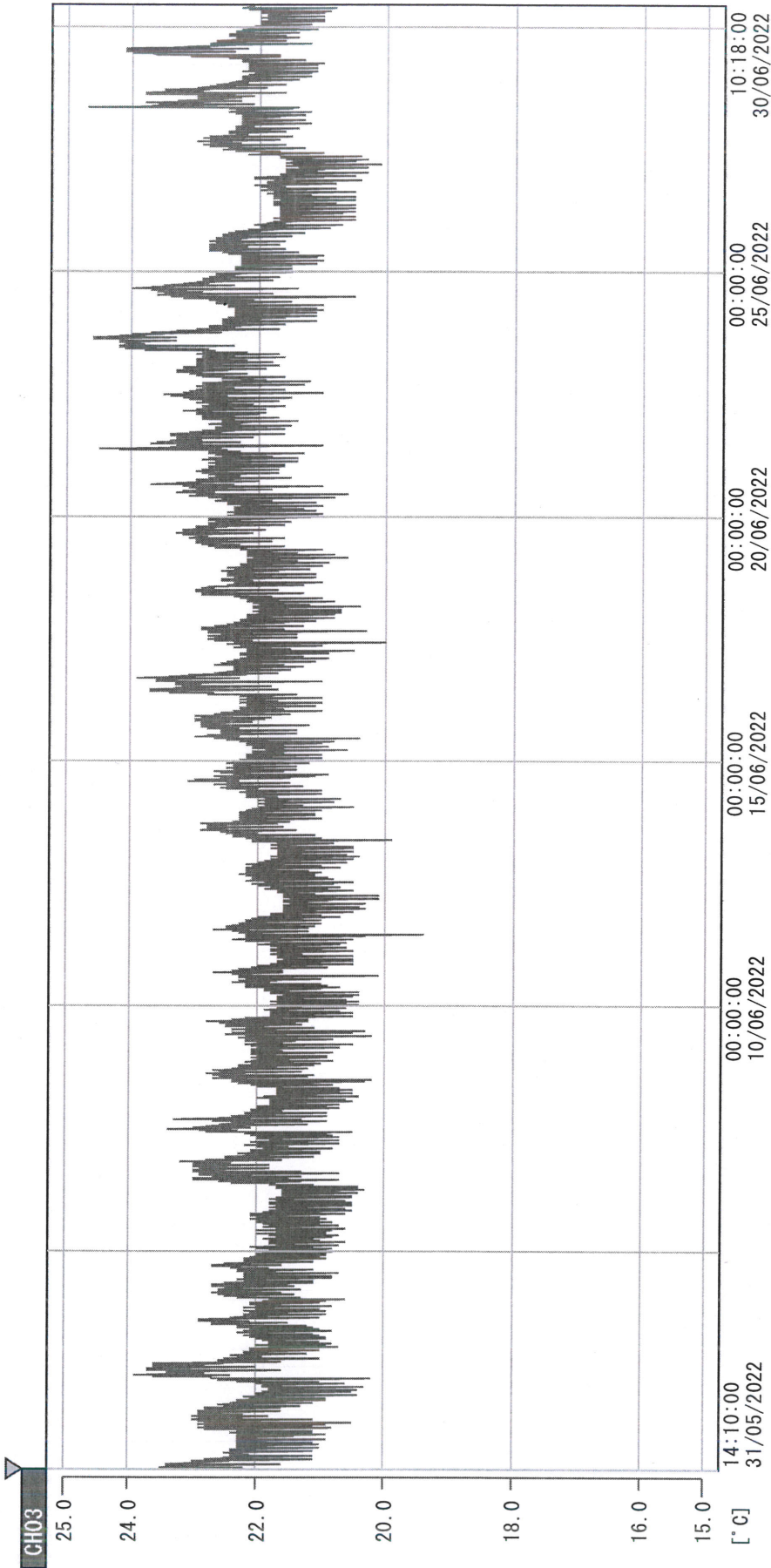
Pharmacist: *Dai Lin Huang*

30 JUN 2022

Page 1

(From Jun/2012 v0.4)

D:\Recorder data\RAW DATA\2022\2022 Jun\220531140922\40000_220531140922.d
 DISP_GRP_1



31/05/2022 14:10:00

1. OPT	-23.9 [°C]	2. Multi	-26.5 [°C]	3. BICT	23.0 [°C]	4. SC-140	3.6 [°C]
5. SC160	3.8 [°C]	6. 201SAR	2.8 [°C]	7. SC160	3.4 [°C]	8. B2CT	19.8 [°C]
TAG01	24.1 [°C]	10. KCC-3	4.5 [°C]	TAG01	-75.0 [°C]	TAG01	-75.0 [°C]

Don Lin / Huang

30 JUN 2022