

Temperature Record
Investigational Product Stored Under Refrigerated Condition (2 to 8 °C)
CH04

Model: SC-140E-CT (G1404001) TP211284

Date (DD/MMM/YYYY)	Time (24hr)	Temperature (°C)			Signature (Initial)	Comments
		Now	Max	Min		
01 / JUN / 2022	0957	4.8	5.3	4.7	KLH	
02 / JUN / 2022	0908	4.8	5.2	4.7	SYW	
03 / JUN / 2022						Holiday
04 / JUN / 2022						Holiday
05 / JUN / 2022						Sunday
06 / JUN / 2022	0910	4.8	5.3	4.6	KLH	
07 / JUN / 2022	0928	5.2	5.5	4.8	KLH	
08 / JUN / 2022	0849	5.2	5.4	4.4	SYW	
09 / JUN / 2022	0857	4.9	5.6	4.8	KLH	
10 / JUN / 2022	0940	4.9	7.4	4.5	KLH	
11 / JUN / 2022	0814	4.8	5.2	4.7	KLH	
12 / JUN / 2022						Sunday
13 / JUN / 2022	1102	4.7	5.2	4.6	KLH	
14 / JUN / 2022	0926	4.7	5.5	4.6	KLH	
15 / JUN / 2022	0902	4.7	5.4	4.6	KLH	
16 / JUN / 2022	0850	4.6	5.5	4.5	KLH	
17 / JUN / 2022	0905	4.7	5.7	4.7	KLH	
18 / JUN / 2022	0907	4.7	5.1	4.6	KLH	
19 / JUN / 2022						Sunday
20 / JUN / 2022	0931	4.8	5.1	3.6	KLH	
21 / JUN / 2022	0914	4.8	5.6	4.6	KLH	
22 / JUN / 2022	0933	4.8	5.5	4.5	KLH	
23 / JUN / 2022	1005	4.7	5.2	4.6	KLH	
24 / JUN / 2022	0914	4.7	5.8	4.6	SYW	
25 / JUN / 2022	0840	4.8	5.3	4.6	FPL	
26 / JUN / 2022						Sunday
27 / JUN / 2022	0853	5.1	5.3	4.8	KLH	
28 / JUN / 2022	0911	4.9	5.7	4.9	KLH	
29 / JUN / 2022	0934	5.0	5.7	4.8	KLH	
30 / JUN / 2022	0912	4.9	5.6	4.8	KLH	

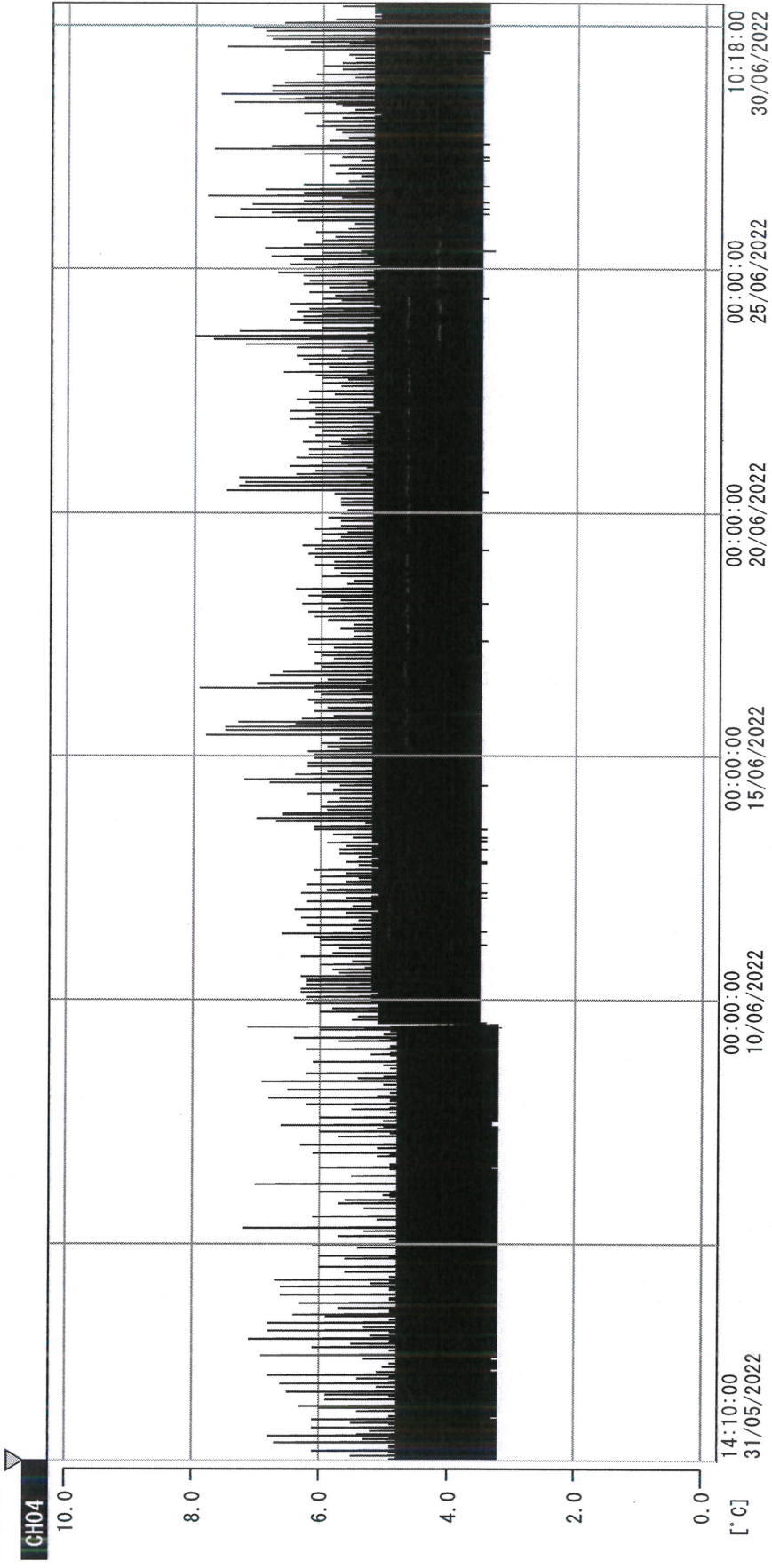
 Pharmacist: *Sai Lin Huang*

30 JUN 2022

Page 1

(From JUN/2012 v0.4)

Recorder data\RAW DATA\2022\2022 Jun\220531140922\0000_220531140922.d
 :P_GRP_1



'05/2022 14:10:00

OPT	-23.9 [°C]	2. Multi	-26.5 [°C]	3. B1CT	23.0 [°C]	4. SC-140	3.6 [°C]
SC160	3.8 [°C]	6. 201SAR	2.8 [°C]	7. SC160	3.4 [°C]	8. B2CT	19.8 [°C]
G01	24.1 [°C]	10. KCC-3	4.5 [°C]	TAG01	-75.0 [°C]	TAG01	-75.0 [°C]

Dai Lin Huang

30 JUN 2022