

Temperature Record
Investigational Product Stored Under Refrigerated Condition (2 to 8 °C)

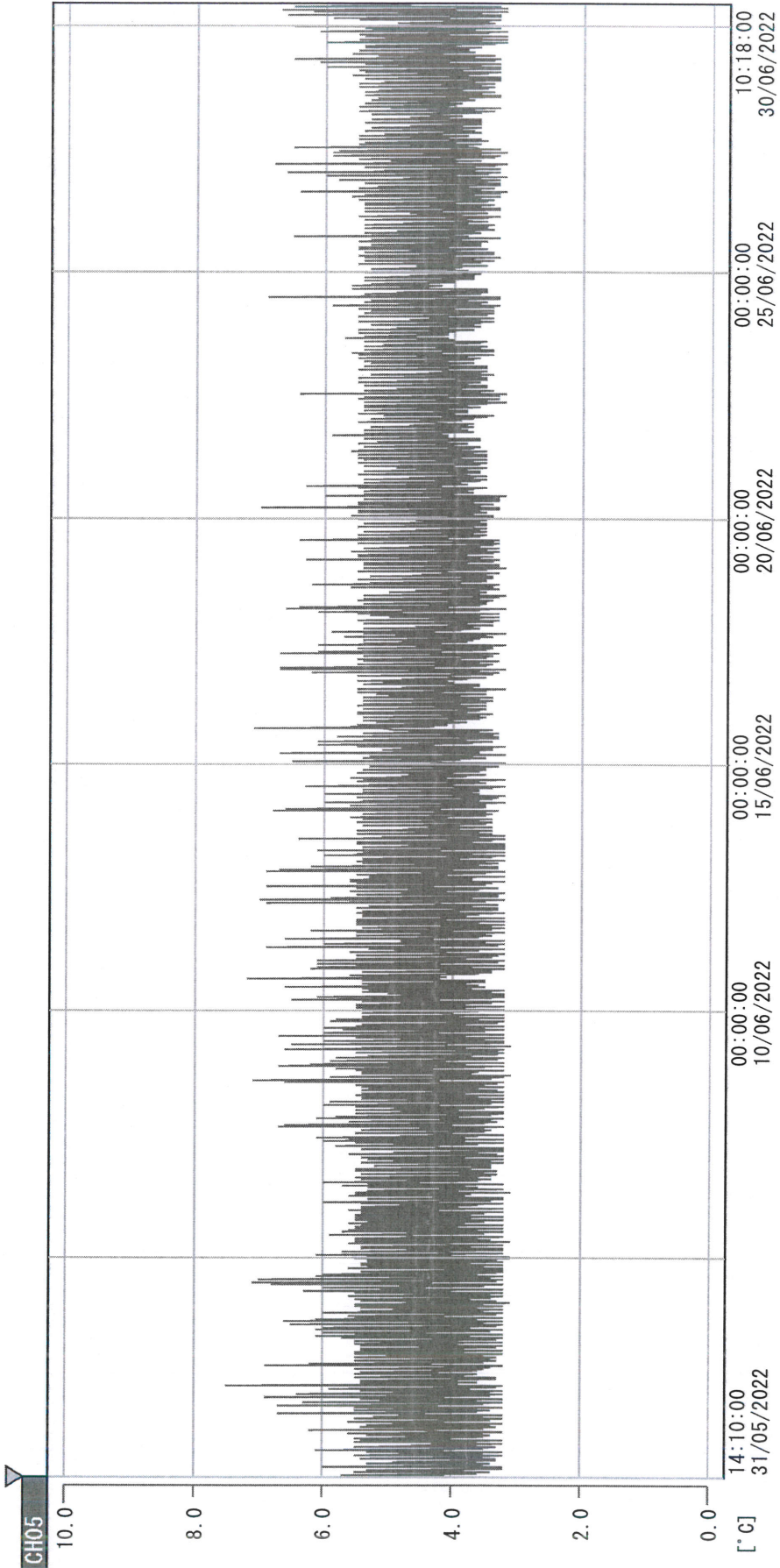
Model: SC-160E (F1222006) TP211295

CH05

Date (DD/MM/YY)	Time (24hr)	Temperature (°C)			Signature (Initial)	Comments
		Now	Max	Min		
01 / JUN / 2022	0956	3.8	6.3	3.4	KLH	
02 / JUN / 2022	0907	3.7	5.7	3.3	SYW	
03 / JUN / 2022						Holiday
04 / JUN / 2022						Holiday
05 / JUN / 2022						Sunday
06 / JUN / 2022	0911	3.8	6.3	3.3	KLH	
07 / JUN / 2022	0927	4.8	5.4	3.5	KLH	
08 / JUN / 2022	0850	3.6	5.5	3.5	SYW	
09 / JUN / 2022	0858	4.2	5.9	3.6	KLH	
10 / JUN / 2022	0939	3.8	5.5	3.7	KLH	
11 / JUN / 2022	0815	3.6	3.1	3.6	KLH	
12 / JUN / 2022						Sunday
13 / JUN / 2022	1101	3.9	5.6	3.5	KLH	
14 / JUN / 2022	0925	5.2	5.6	3.6	KLH	
15 / JUN / 2022	0901	4.8	5.6	3.5	KLH	
16 / JUN / 2022	0910	4.5	6.0	3.7	SYW	
17 / JUN / 2022	0849	4.8	5.8	3.7	KLH	
18 / JUN / 2022	0906	4.0	5.7	3.7	KLH	
19 / JUN / 2022						Sunday
20 / JUN / 2022	0930	4.6	6.0	3.6	KLH	
21 / JUN / 2022	0913	4.7	5.5	3.7	KLH	
22 / JUN / 2022	0932	4.7	6.1	4.0	KLH	
23 / JUN / 2022	1004	6.0	6.7	4.1	KLH	
24 / JUN / 2022	0913	5.0	6.0	4.4	SYW	
25 / JUN / 2022	0838	5.1	6.3	4.8	YPL	
26 / JUN / 2022						Sunday
27 / JUN / 2022	0852	5.8	6.4	4.8	KLH	
28 / JUN / 2022	0912	5.4	6.5	4.7	KLH	
29 / JUN / 2022	0933	5.0	6.4	4.8	KLH	
30 / JUN / 2022	0913	5.9	6.1	4.2	KLH	

Pharmacist: *Lai Lin Huang*
30 JUN 2022

D:\Recorder data\RAW DATA\2022\2022 Jun\220531140922\40000_220531140922.dtm
 DISP_GRP_1



31/05/2022 14:10:00

1. OPT	-23.9 [°C]	2. Multi	-26.5 [°C]	3. B1CT	23.0 [°C]	4. SC-140	3.6 [°C]
5. SC160	3.8 [°C]	6. 201SAR	2.8 [°C]	7. SC160	3.4 [°C]	8. B2CT	19.8 [°C]
TAG01	24.1 [°C]	10. KCC-3	4.5 [°C]	TAG01	-75.0 [°C]	TAG01	-75.0 [°C]

Hai Lin Huang

30 JUN 2022