

Temperature Record

Investigational Product Stored Under Refrigerated Condition (2 to 8 °C)

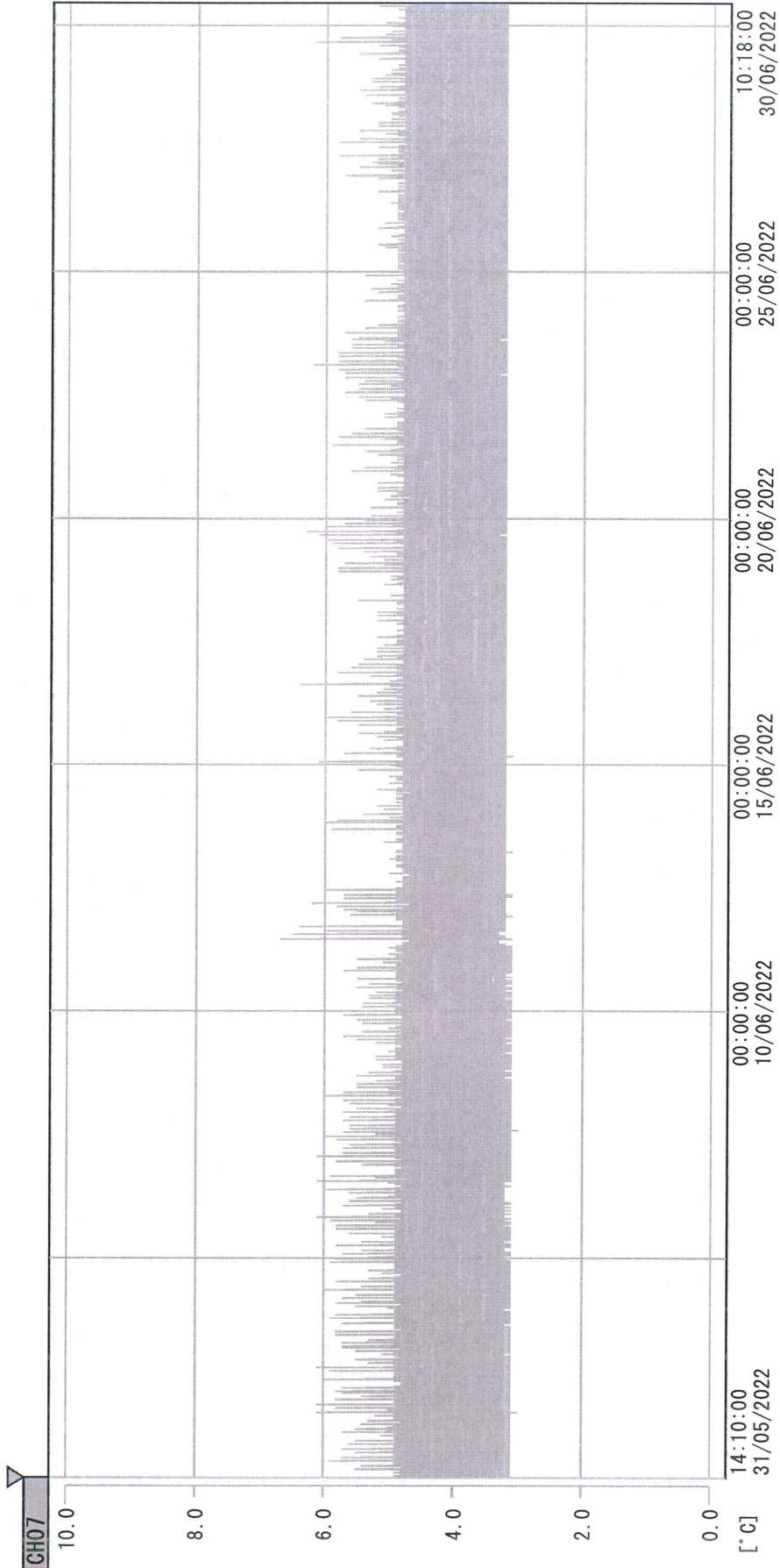
B2 Model: SC-160E (H1224001) TP211307

CH07

Date (DD/MMM/YYYY)	Time (24hr)	Temperature (°C)			Signature (Initial)	Comments
		Now	Max	Min		
01 / JUN / 2022	1553	4.6	5.0	4.3	KLH	
02 / JUN / 2022	1012	4.7	5.1	4.3	SLW	
03 / JUN / 2022						Holiday
04 / JUN / 2022						Holiday
05 / JUN / 2022						Sunday
06 / JUN / 2022	1550	4.4	5.1	4.3	KLH	
07 / JUN / 2022	1621	4.4	5.1	4.3	KLH	
08 / JUN / 2022	1032	4.7	5.0	4.3	SLW	
09 / JUN / 2022	1107	3.9	5.2	3.9	KLH	
10 / JUN / 2022	1717	4.0	4.8	3.8	KLH	
11 / JUN / 2022	1047	3.8	4.8	3.8	KLH	
12 / JUN / 2022						Sunday
13 / JUN / 2022	0944	4.2	5.4	3.8	KLH	
14 / JUN / 2022	1436	4.2	5.0	4.1	KLH	
15 / JUN / 2022	1446	4.2	5.1	4.1	KLH	
16 / JUN / 2022	0921	4.3	5.0	4.1	SLW	
17 / JUN / 2022	1534	4.2	5.4	4.1	KLH	
18 / JUN / 2022	1134	4.3	4.6	4.1	KLH	
19 / JUN / 2022						Sunday
20 / JUN / 2022	1214	4.2	5.2	4.1	KLH	
21 / JUN / 2022	0945	4.2	4.7	4.1	SLW	
22 / JUN / 2022	1012	4.3	4.9	4.1	KLH	
23 / JUN / 2022	1507	4.2	5.1	4.1	KLH	
24 / JUN / 2022	1537	4.2	4.8	4.1	SLW	
25 / JUN / 2022	1101	4.2	4.7	4.1	KLH	
26 / JUN / 2022						Sunday
27 / JUN / 2022	1431	4.3	4.9	4.1	KLH	
28 / JUN / 2022	0949	4.2	4.9	4.0	KLH	
29 / JUN / 2022	1442	4.1	4.7	4.0	KLH	
30 / JUN / 2022	0923	4.2	5.1	4.0	KLH	

 Pharmacist: *Sai Lin Huang*
 30 JUN 2022

D:\Recorder data\RAW DATA\2022\2022 Jun\220531140922\0000_220531140922.dm
 DISP_GRP_1



31/05/2022 14:10:00

1. OPT	-23.9 [°C]	2. Multi	-26.5 [°C]	3. B1CT	23.0 [°C]	4. SC-140	3.6 [°C]
5. SC160	3.8 [°C]	6. 201SAR	2.8 [°C]	7. SC160	3.4 [°C]	8. B2CT	19.8 [°C]
TAG01	24.1 [°C]	10. KCC-3	4.5 [°C]	TAG01	-75.0 [°C]	TAG01	-75.0 [°C]

Lin Lin Huang
 30 JUN 2022