

## Temperature Record

### Investigational Product Stored at Room Temperature (15 to 25 °C)

Model: TP211318

PHRCR2 (B2)

CH08

Date (DD/MM/YYYY)	Time (24hr)	Temperature (°C)			Signature (Initial)	Comments
		Now	Max	Min		
01 / JUN / 2022	1555	19.8	20.2	18.5	KLH	
02 / JUN / 2022	1013	19.6	19.9	18.4	SYW	
03 / JUN / 2022						Holiday
04 / JUN / 2022						Holiday
05 / JUN / 2022						Sunday
06 / JUN / 2022	1552	20.1	21.7	18.3	KLH	
07 / JUN / 2022	1623	19.8	20.3	18.6	KLH	
08 / JUN / 2022	1031	19.8	20.0	18.1	SYW	
09 / JUN / 2022	1109	19.8	19.9	18.4	KLH	
10 / JUN / 2022	1719	20.5	20.5	18.8	KLH	
11 / JUN / 2022	1044	21.9	22.0	18.8	KLH	
12 / JUN / 2022						Sunday
13 / JUN / 2022	0946	20.6	21.7	19.4	KLH	
14 / JUN / 2022	1438	20.8	21.8	20.5	KLH	
15 / JUN / 2022	1448	21.4	21.6	19.8	KLH	
16 / JUN / 2022	0923	21.7	23.1	21.1	SYW	
17 / JUN / 2022	1536	22.1	23.2	21.3	KLH	
18 / JUN / 2022	1136	21.4	22.4	21.4	KLH	
19 / JUN / 2022						Sunday
20 / JUN / 2022	1216	22.1	23.0	21.3	KLH	
21 / JUN / 2022	0946	22.0	22.5	21.4	SYW	
22 / JUN / 2022	1014	21.9	22.5	21.0	KLH	
23 / JUN / 2022	1509	23.8	23.8	21.9	KLH	
24 / JUN / 2022	1539	21.8	24.0	20.8	SYW	
25 / JUN / 2022	1102	21.6	22.0	20.7	KLH	
26 / JUN / 2022						Sunday
27 / JUN / 2022	1433	22.0	22.8	20.5	KLH	
28 / JUN / 2022	0951	22.0	22.8	20.9	KLH	
29 / JUN / 2022	1444	22.4	22.4	20.9	KLH	
30 / JUN / 2022	0925	21.6	23.6	20.9	KLH	

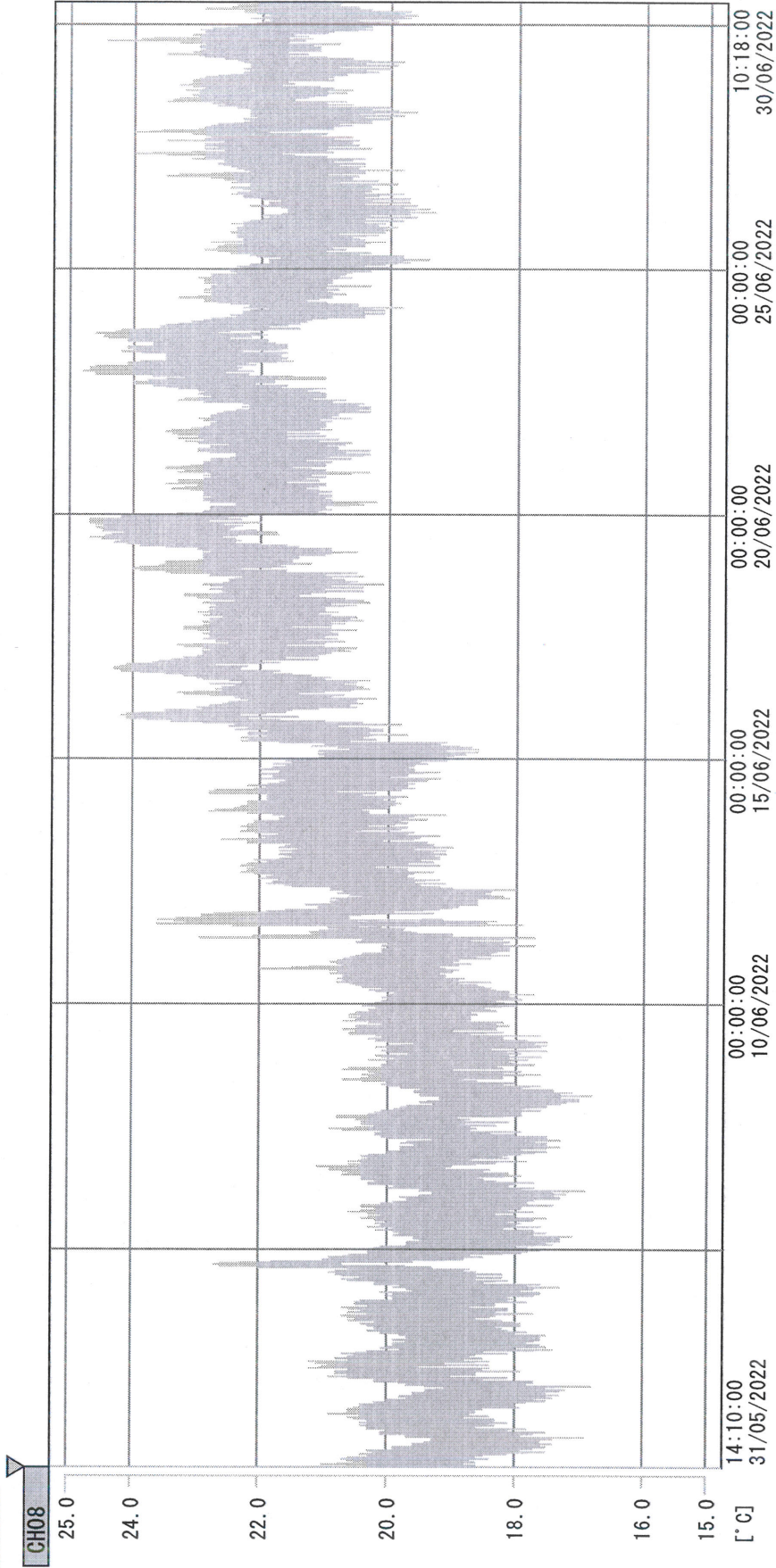
 Pharmacist: *Hsin Lin Huang*

30 JUN 2022

Page 1

(From JUN/2012 v0.4)

D:\Recorder data\RAW DATA\2022\2022 Jun\220531140922\0000\_220531140922.dm  
 DISP\_GRP\_1



31/05/2022 14:10:00

1. OPT	-23.9 [°C]	2. Muji	-26.5 [°C]	3. BICI	23.0 [°C]	4. SC-140	3.6 [°C]
5. SC160	3.8 [°C]	6. 201SAR	2.8 [°C]	7. SC160	3.4 [°C]	8. B2CT	19.8 [°C]
TAG01	24.1 [°C]	10. KCC-3	4.5 [°C]	TAG01	-75.0 [°C]	TAG01	-75.0 [°C]

*Xai Lin Duang*

30 JUN 2022