

Temperature Record

Investigational Product Stored Under Refrigerated Condition (2 to 8 °C)

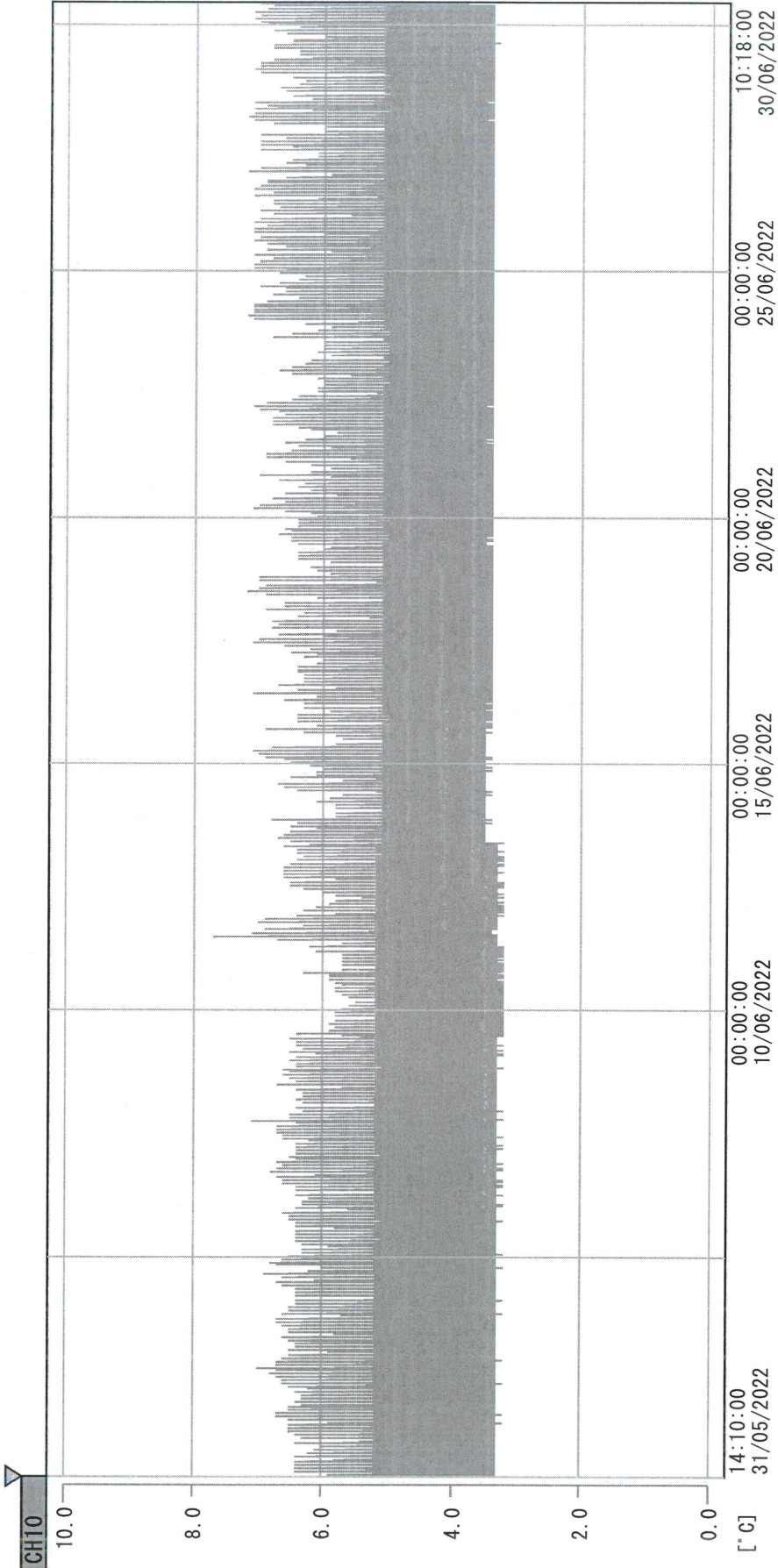
B2 Model: KCC3 TP 211320

CH10

Date (DD/MM/YYYY)	Time (24hr)	Temperature (°C)			Signature (Initial)	Comments
		Now	Max	Min		
01 / JUN / 2022	1554	4.7	5.7	4.3	KLH	
02 / JUN / 2022	1012	4.6	5.8	4.3	SYW	
03 / JUN / 2022						Holiday
04 / JUN / 2022						Holiday
05 / JUN / 2022						Sunday
06 / JUN / 2022	1551	4.7	6.0	4.3	KLH	
07 / JUN / 2022	1622	4.5	5.9	4.3	KLH	
08 / JUN / 2022	1033	4.3	4.3	3.4	SYW	
09 / JUN / 2022	1108	4.6	5.5	4.3	KLH	
10 / JUN / 2022	1718	4.5	5.4	4.2	KLH	
11 / JUN / 2022	1048	4.8	5.7	4.2	KLH	
12 / JUN / 2022						Sunday
13 / JUN / 2022	0945	5.5	6.3	4.4	KLH	
14 / JUN / 2022	1437	4.8	5.9	4.4	KLH	
15 / JUN / 2022	1447	5.7	6.1	4.8	KLH	
16 / JUN / 2022	0922	5.3	6.2	5.0	SYW	
17 / JUN / 2022	1535	5.1	6.3	5.0	KLH	
18 / JUN / 2022	1135	6.2	6.2	4.8	KLH	
19 / JUN / 2022						Sunday
20 / JUN / 2022	1215	4.9	6.3	4.8	KLH	
21 / JUN / 2022	0945	4.9	6.1	4.8	SYW	
22 / JUN / 2022	1013	5.1	6.3	4.8	KLH	
23 / JUN / 2022	1508	4.9	5.9	4.8	KLH	
24 / JUN / 2022	1738	4.9	6.1	4.8	SYW	
25 / JUN / 2022	1103	5.1	6.3	4.9	KLH	
26 / JUN / 2022						Sunday
27 / JUN / 2022	1432	5.7	6.2	4.8	KLH	
28 / JUN / 2022	0950	5.1	6.2	4.8	KLH	
29 / JUN / 2022	1443	5.1	6.2	4.8	KLH	
30 / JUN / 2022	0924	5.0	6.1	4.8	KLH	

 Pharmacist: *Jai Lin Huang*
 30 JUN 2022
 Page 1
 (From JUN/2012 V0.4)

D:\Recorder data\RAW DATA\2022\2022 Jun\220531140922\0000_220531140922.dm
 DISP_GRP_1



31/05/2022 14:10:00

1. OPT	-23.9 [°C]	2. Multi	-26.5 [°C]	3. B1CT	23.0 [°C]	4. SC-140	3.6 [°C]
5. SC160	3.8 [°C]	6. 201SAR	2.8 [°C]	7. SC160	3.4 [°C]	8. B2CT	19.8 [°C]
TAG01	24.1 [°C]	10. KCC-3	4.5 [°C]	TAG01	-75.0 [°C]	TAG01	-75.0 [°C]

Olai Lin Huang

30 JUN 2022