

Temperature Record

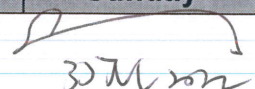
Investigational Product Stored Under Refrigerated Condition (2 to 8 °C)

CH04

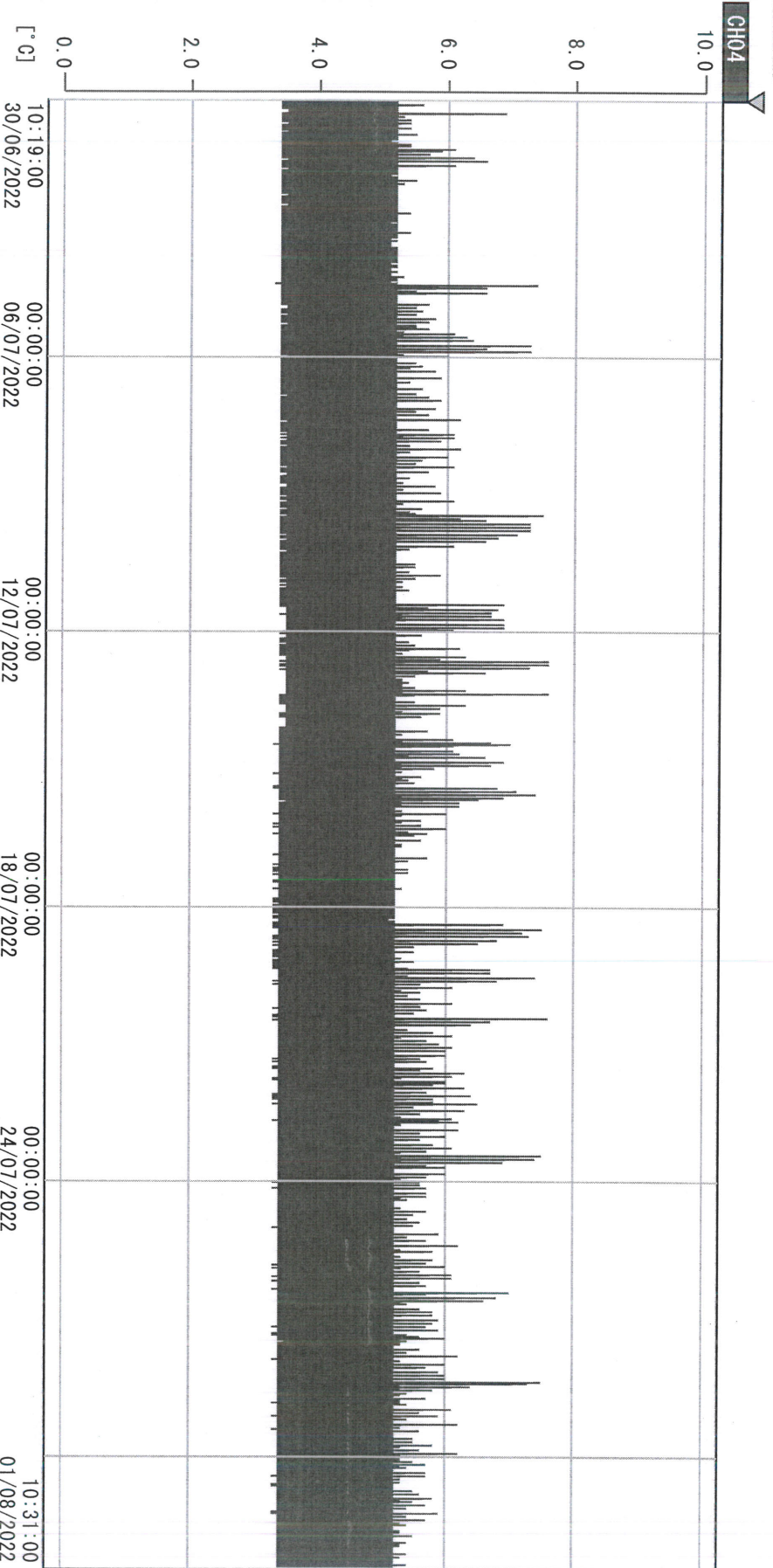
Model: SC-140E-CT (G1404001) TP211284

Date (DD/MMM/YYYY)	Time (24hr)	Temperature (°C)			Signature (Initial)	Comments
		Now	Max	Min		
01 / JUL / 2022	0904	4.9	5.4	4.8	KLH	
02 / JUL / 2022	0923	5.0	5.4	4.9	KLH	
03 / JUL / 2022						Sunday
04 / JUL / 2022	0854	5.0	5.0	4.8	KLH	
05 / JUL / 2022	0852	4.8	5.5	4.7	SYW	
06 / JUL / 2022	0926	5.0	5.5	4.7	KLH	
07 / JUL / 2022	0842	4.9	5.2	4.8	KLH	
08 / JUL / 2022	0843	4.9	5.3	4.8	SYW	
09 / JUL / 2022	0922	4.9	5.2	4.8	SYW	
10 / JUL / 2022						Sunday
11 / JUL / 2022	0900	4.9	5.6	4.7	KLH	
12 / JUL / 2022	0842	4.9	5.5	4.8	KLH	
13 / JUL / 2022	0915	4.7	5.7	4.7	KLH	
14 / JUL / 2022	0902	4.7	5.7	4.6	KLH	
15 / JUL / 2022	0907	4.7	5.4	4.6	KLH	
16 / JUL / 2022	0933	4.7	5.5	4.6	YPL	
17 / JUL / 2022						Sunday
18 / JUL / 2022	0922	4.7	5.1	4.5	KLH	
19 / JUL / 2022	0903	5.0	5.4	4.6	SYW	
20 / JUL / 2022	0908	4.7	5.4	4.6	SYW	
21 / JUL / 2022	1034	4.7	5.5	4.6	KLH	
22 / JUL / 2022	0910	4.6	5.1	4.5	KLH	
23 / JUL / 2022	0948	4.6	5.1	4.5	YPL	
24 / JUL / 2022						Sunday
25 / JUL / 2022	0828	4.5	5.5	4.4	SYW	
26 / JUL / 2022	0857	4.5	4.9	4.4	KLH	
27 / JUL / 2022	0849	4.5	5.3	4.4	SYW	
28 / JUL / 2022	0906	4.5	5.0	4.4	SYW	
29 / JUL / 2022	0927	4.5	5.5	4.2	SYW	
30 / JUL / 2022	1057	4.6	4.9	4.4	SYW	
31 / JUL / 2022						Sunday

Pharmacist:



D:\Recorder data\RAW DATA\2022\2022 Jul\220630101844\0000_220630101844.dm
 DISP_GRP 1



30/06/2022 10:19:00	1. OPT	-21.9 [°C]	2. Multi	-21.5 [°C]	3. BICT	22.2 [°C]	4. SC-140	4.5 [°C]
	5. SC160	4.7 [°C]	6. 201SAR	4.2 [°C]	7. SC160	3.2 [°C]	8. B2CT	21.6 [°C]
	TAG01	25.1 [°C]	10. KCC-3	4.1 [°C]	TAG01	-75.0 [°C]	TAG01	-75.0 [°C]

←
 27 Aug 2022