

Temperature Record

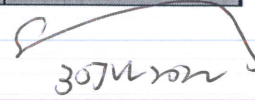
Investigational Product Stored Under Refrigerated Condition (2 to 8 °C)

B2 Model: SC-160E (H1224001) TP211307

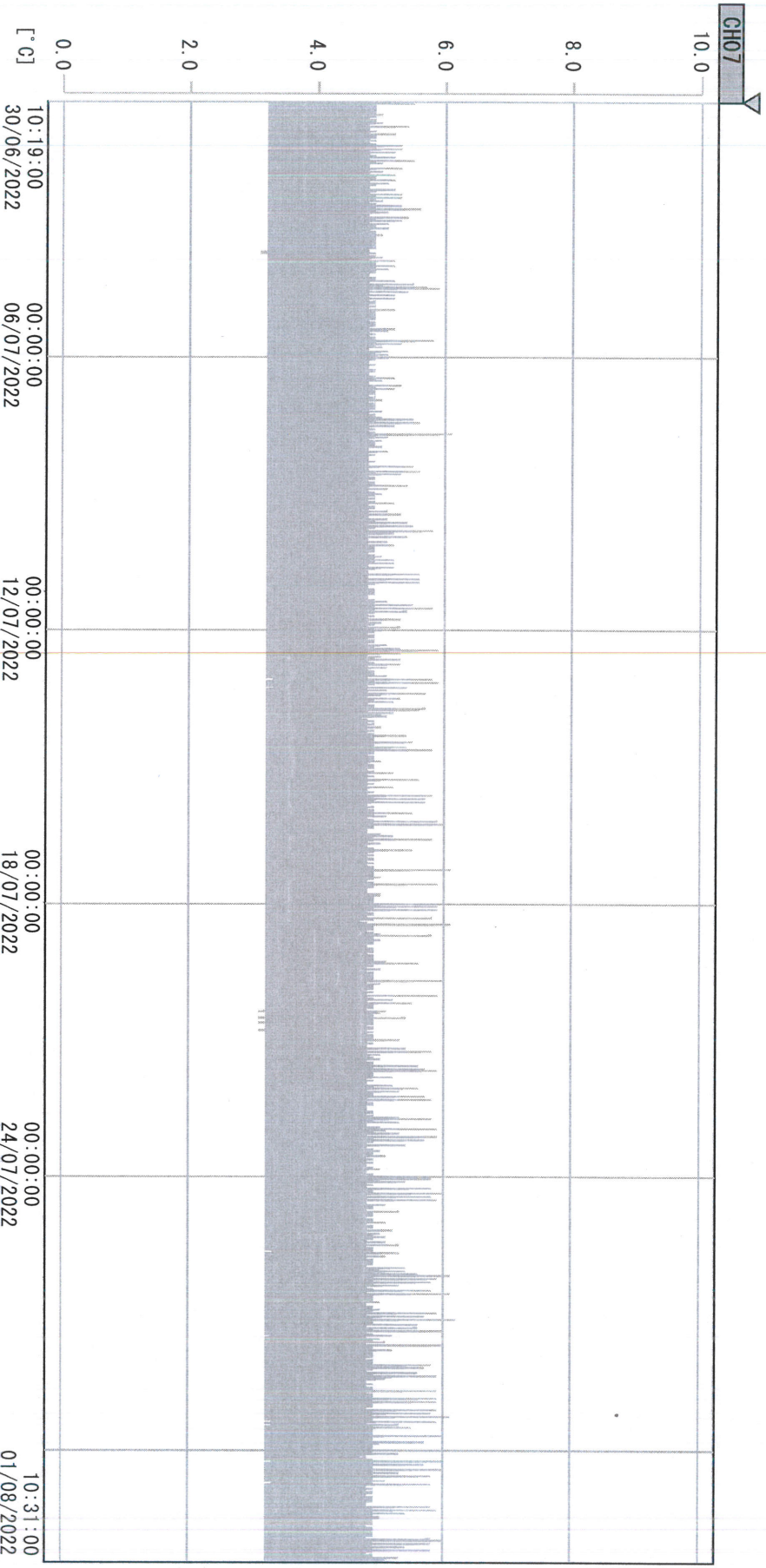
CH07

Date (DD/MMM/YYYY)	Time (24hr)	Temperature (°C)			Signature (Initial)	Comments
		Now	Max	Min		
01 / JUL / 2022	1415	4.1	4.6	4.0	KLH	
02 / JUL / 2022	1117	4.2	4.6	4.0	KLH	
03 / JUL / 2022						Sunday
04 / JUL / 2022	0946	4.2	4.7	4.0	KLH	
05 / JUL / 2022	0944	4.2	4.9	4.0	KLH	
06 / JUL / 2022	1411	4.3	4.9	4.0	KLH	
07 / JUL / 2022	1555	4.0	4.7	4.0	SYW	
08 / JUL / 2022	0958	4.1	5.1	4.0	KLH	
09 / JUL / 2022	1038	4.1	4.7	4.0	SYW	
10 / JUL / 2022						Sunday
11 / JUL / 2022	1209	4.0	4.8	4.0	KLH	
12 / JUL / 2022	1504	4.0	4.9	4.0	KLH	
13 / JUL / 2022	1002	4.1	4.8	4.0	KLH	
14 / JUL / 2022	1101	4.3	4.8	3.9	KLH	
15 / JUL / 2022	0940	4.0	4.8	4.0	KLH	
16 / JUL / 2022	1140	4.0	5.0	4.0	YPL	
17 / JUL / 2022						Sunday
18 / JUL / 2022	1454	5.1	5.9	4.8	SYW	
19 / JUL / 2022	1422	4.2	4.9	4.0	KLH	
20 / JUL / 2022	0949	4.2	4.9	4.0	KLH	
21 / JUL / 2022	0950	4.1	4.9	4.0	KLH	
22 / JUL / 2022	1002	4.2	5.0	4.0	SYW	
23 / JUL / 2022	1138	4.1	4.9	4.0	YPL	
24 / JUL / 2022						Sunday
25 / JUL / 2022	1420	4.1	5.1	4.0	SYW	
26 / JUL / 2022	1006	4.3	5.0	4.0	KLH	
27 / JUL / 2022	1145	4.3	5.1	4.0	KLH	
28 / JUL / 2022	0942	4.2	4.9	3.9	SYW	
29 / JUL / 2022	1345	4.3	5.0	4.0	SYW	
30 / JUL / 2022	0954	4.3	5.1	3.9	SYW	
31 / JUL / 2022						Sunday

Pharmacist:



D:\Recorder data\RAW DATA\2022\2022 Jul\220630101844\0000_220630101844.dn
 DISP GRP 1



30/06/2022 10:19:00	1. OPT	-21.9 [°C]	2. Multi	-21.5 [°C]	3. BICT	22.2 [°C]	4. SC-140	4.5 [°C]
	5. SC160	4.7 [°C]	6. 201SAR	4.2 [°C]	7. SC160	3.2 [°C]	8. B2GT	21.6 [°C]
	TAG01	25.1 [°C]	10. KGC-3	4.1 [°C]	TAG01	-75.0 [°C]	TAG01	-75.0 [°C]

Handwritten signature