

Temperature Record

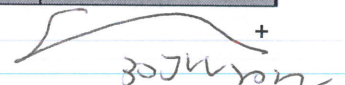
Investigational Product Stored Under Refrigerated Condition (2 to 8 °C)

B2 Model: KCC3 TP 211320

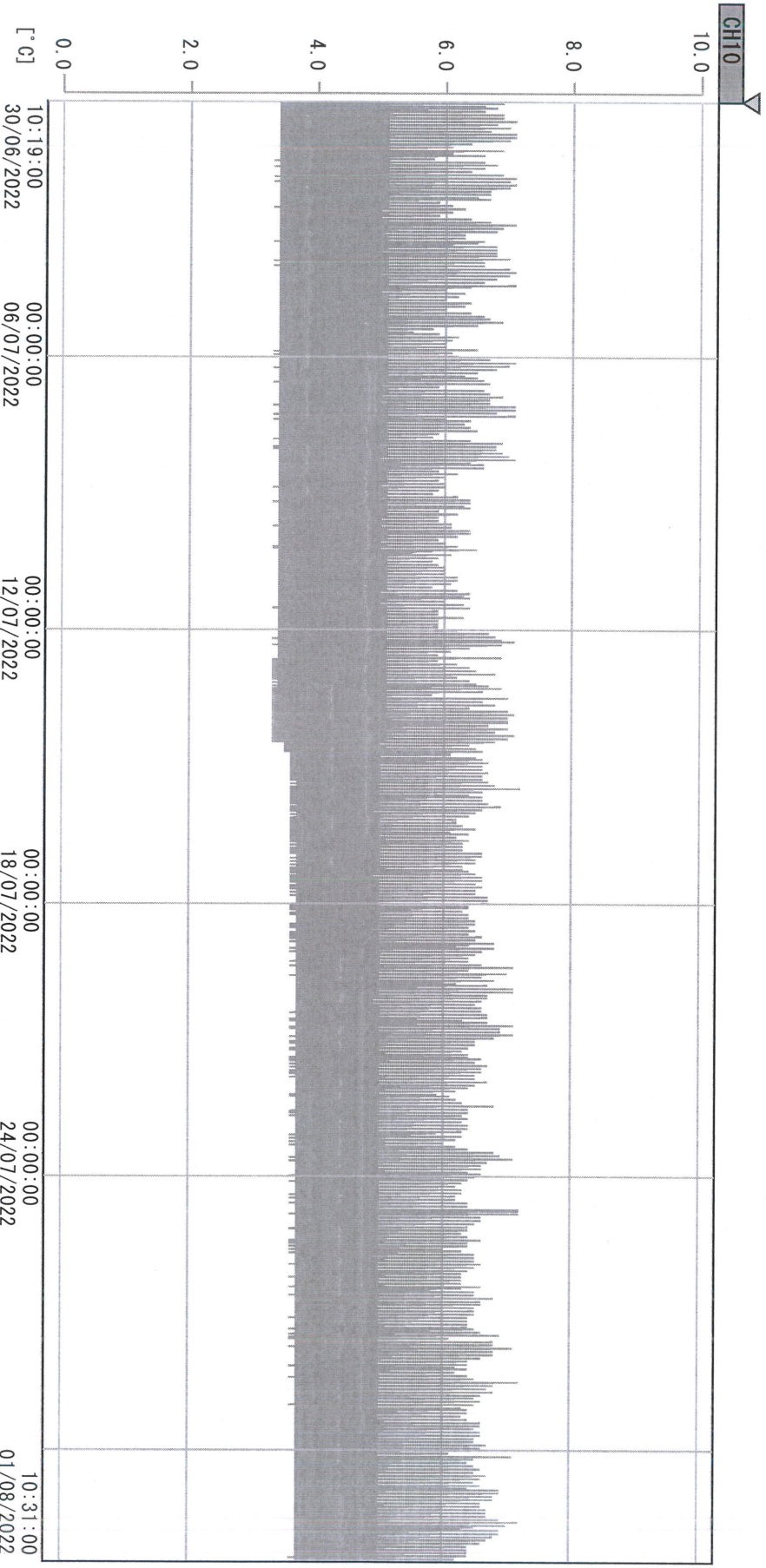
CH10

Date (DD/MMM/YYYY)	Time (24hr)	Temperature (°C)			Signature (Initial)	Comments
		Now	Max	Min		
01 / JUL / 2022	1416	5.1	6.1	4.8	KLH	
02 / JUL / 2022	1118	5.2	6.1	4.8	KLH	
03 / JUL / 2022						Sunday
04 / JUL / 2022	0947	5.0	6.1	4.8	KLH	
05 / JUL / 2022	0945	5.0	6.1	4.7	KLH	
06 / JUL / 2022	1412	5.0	6.1	4.8	KLH	
07 / JUL / 2022	076	4.8	6.0	4.7	SW	
08 / JUL / 2022	0959	5.3	6.2	4.7	KLH	
09 / JUL / 2022	1008	4.8	5.7	4.8	SW	
10 / JUL / 2022						Sunday
11 / JUL / 2022	1210	5.4	6.0	4.8	KLH	
12 / JUL / 2022	1505	4.5	5.9	4.5	KLH	
13 / JUL / 2022	1003	4.9	5.8	4.5	KLH	
14 / JUL / 2022	1102	4.6	5.9	4.5	KLH	
15 / JUL / 2022	0941	4.9	5.9	4.5	KLH	
16 / JUL / 2022	1142	5.1	6.1	4.8	YPL	
17 / JUL / 2022						Sunday
18 / JUL / 2022	1453	4.1	5.1	4.0	SW	
19 / JUL / 2022	1423	5.3	6.3	5.0	KLH	
20 / JUL / 2022	0950	5.1	6.2	4.9	KLH	
21 / JUL / 2022	0951	5.7	6.3	4.9	KLH	
22 / JUL / 2022	1004	5.3	6.0	4.9	SW	
23 / JUL / 2022	1140	5.4	5.9	4.8	YPL	
24 / JUL / 2022						Sunday
25 / JUL / 2022	1421	5.0	6.1	4.8	SW	
26 / JUL / 2022	1007	5.0	5.9	4.9	KLH	
27 / JUL / 2022	1146	5.1	6.1	4.9	KLH	
28 / JUL / 2022	0942	5.1	6.2	4.9	SW	
29 / JUL / 2022	1346	5.0	5.9	4.9	SW	
30 / JUL / 2022	0955	5.1	6.3	5.0	SW	
31 / JUL / 2022						Sunday

Pharmacist:



D:\Recorder data\RAW DATA\2022\2022 Jul\220630101844\0000_220630101844.dn
 DISP GRP 1



30/06/2022 10:19:00									
1. OPT	-21.9 [°C]	2. Multi	-21.5 [°C]	3. BICT	22.2 [°C]	4. SC-140	4.5 [°C]		
5. SC160	4.7 [°C]	6. 201SAR	4.2 [°C]	7. SC160	3.2 [°C]	8. B2GT	21.6 [°C]		
TAG01	25.1 [°C]	10. KGC-3	4.1 [°C]	TAG01	-75.0 [°C]	TAG01	-75.0 [°C]		

01 Aug 2022