

### Temperature Record

Investigational Product Stored Under Refrigerated Condition (2 to 8 °C)

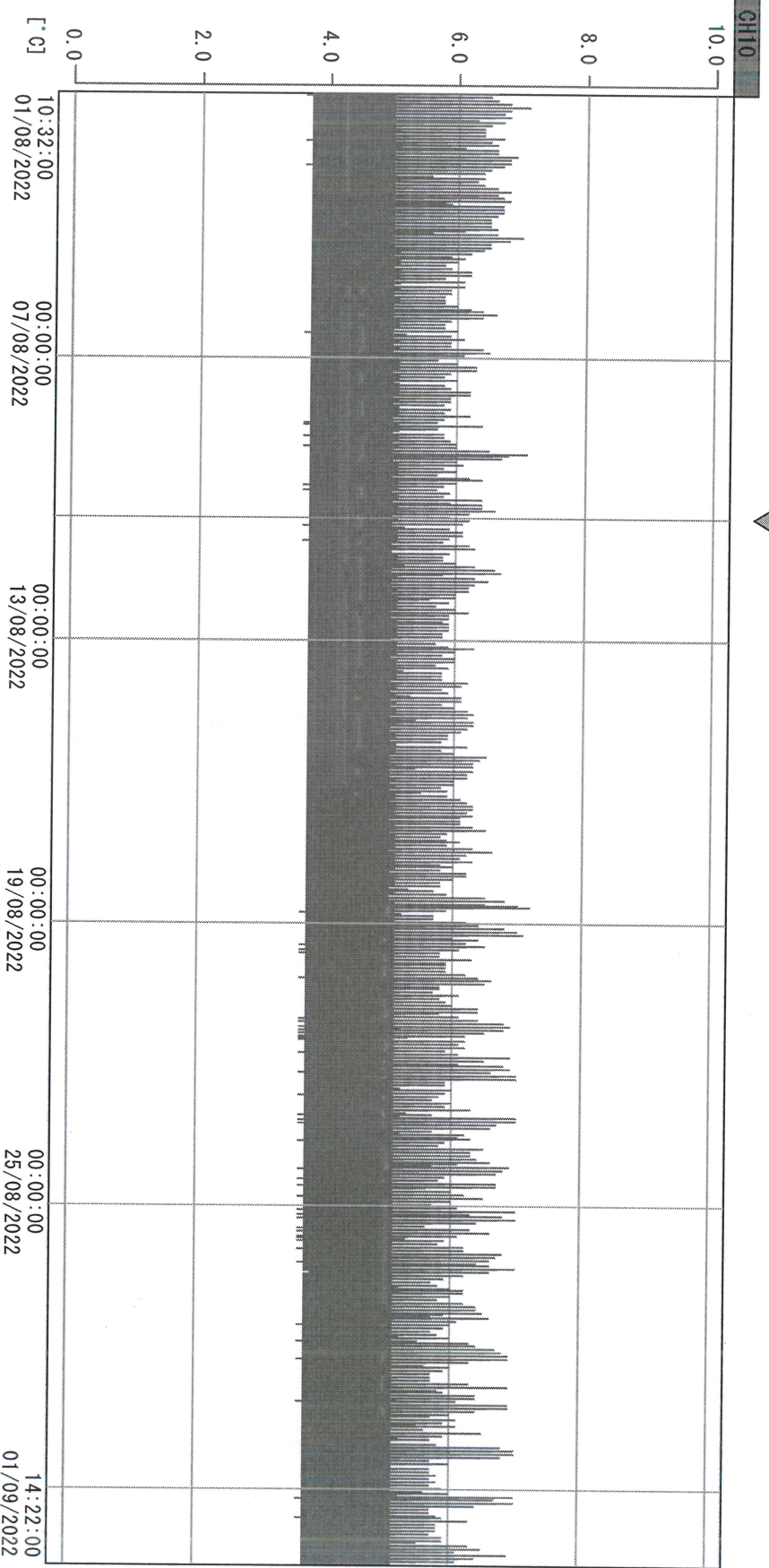
B2 Model: KCC3 TP 211320

CH10

Date (DD/MM/YYYY)	Time (24hr)	Temperature (°C)			Signature (Initial)	Comments
		Now	Max	Min		
01 / AUG / 2022	0932	5.3	6.4	5.1	SYW	
02 / AUG / 2022	0946	5.3	6.3	5.1	SYW	
03 / AUG / 2022	10:32	5.2	6.4	5.0	HSC	
04 / AUG / 2022	10:29	5.4	6.1	5.1	HSC	
05 / AUG / 2022	15:20	5.3	6.2	5.0	HSC	
06 / AUG / 2022	1129	5.2	6.3	5.0	SYW	
07 / AUG / 2022						Sunday
08 / AUG / 2022	1545	5.2	6.2	5.1	HSC	
09 / AUG / 2022	1535	5.1	6.4	5.0	HSC	
10 / AUG / 2022	1416	5.2	6.3	5.0	KLH	
11 / AUG / 2022	0947	5.2	5.8	5.0	HSC	
12 / AUG / 2022	1552	5.1	6.0	5.0	HSC	
13 / AUG / 2022	0848	5.2	6.0	5.0	SYW	
14 / AUG / 2022						Sunday
15 / AUG / 2022	1554	5.2	6.3	5.0	HSC	
16 / AUG / 2022	1011	5.1	6.1	5.1	HSC	
17 / AUG / 2022	0946	5.2	5.9	4.9	HSC	
18 / AUG / 2022	1006	5.3	6.1	4.9	HSC	
19 / AUG / 2022	1049	4.8	6.2	4.7	KLH	
20 / AUG / 2022	1048	5.0	5.8	4.7	HSC	
21 / AUG / 2022						Sunday
22 / AUG / 2022	1456	5.1	6.0	4.9	SYW	
23 / AUG / 2022	0948	5.0	6.1	4.7	KLH	
24 / AUG / 2022	1011	4.6	5.8	4.5	HSC	
25 / AUG / 2022	1009	4.8	5.9	4.7	HSC	
26 / AUG / 2022	0936	4.8	5.9	4.5	HSC	
27 / AUG / 2022	1104	4.5	5.6	4.4	KLH	
28 / AUG / 2022						Sunday
29 / AUG / 2022	1451	4.6	5.7	4.4	HSC	
30 / AUG / 2022	1535	4.5	5.9	4.4	HSC	
31 / AUG / 2022	1433	4.5	5.8	4.4	HSC	

Pharmacist: *Jhy Shyan* +  
31 AUG 2022

D:\Recorder\_data\RAW DATA\2022\2022Aug\220801103122\0000\_220801103122.dfm  
 DISP\_GRP 1



10/08/2022 09:35:00

1. OPT	-24.1 [°C]	2. Multi	-24.3 [°C]	3. BICT	21.7 [°C]	4. SC-140	3.9 [°C]
5. SC160	3.8 [°C]	6. 201SAR	2.8 [°C]	7. SC160	4.2 [°C]	8. B2CT	18.9 [°C]
TAG01	24.2 [°C]	10. KCC-3	3.7 [°C]	TAG01	-75.0 [°C]	TAG01	-75.0 [°C]

*Ray Steida*  
 6/5/2022