

Temperature Record

Investigational Product Stored at Room Temperature (15 to 25 °C)

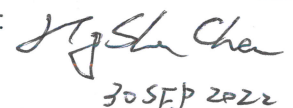
Model: TP211318

PHRCR2 (B2)

CH08

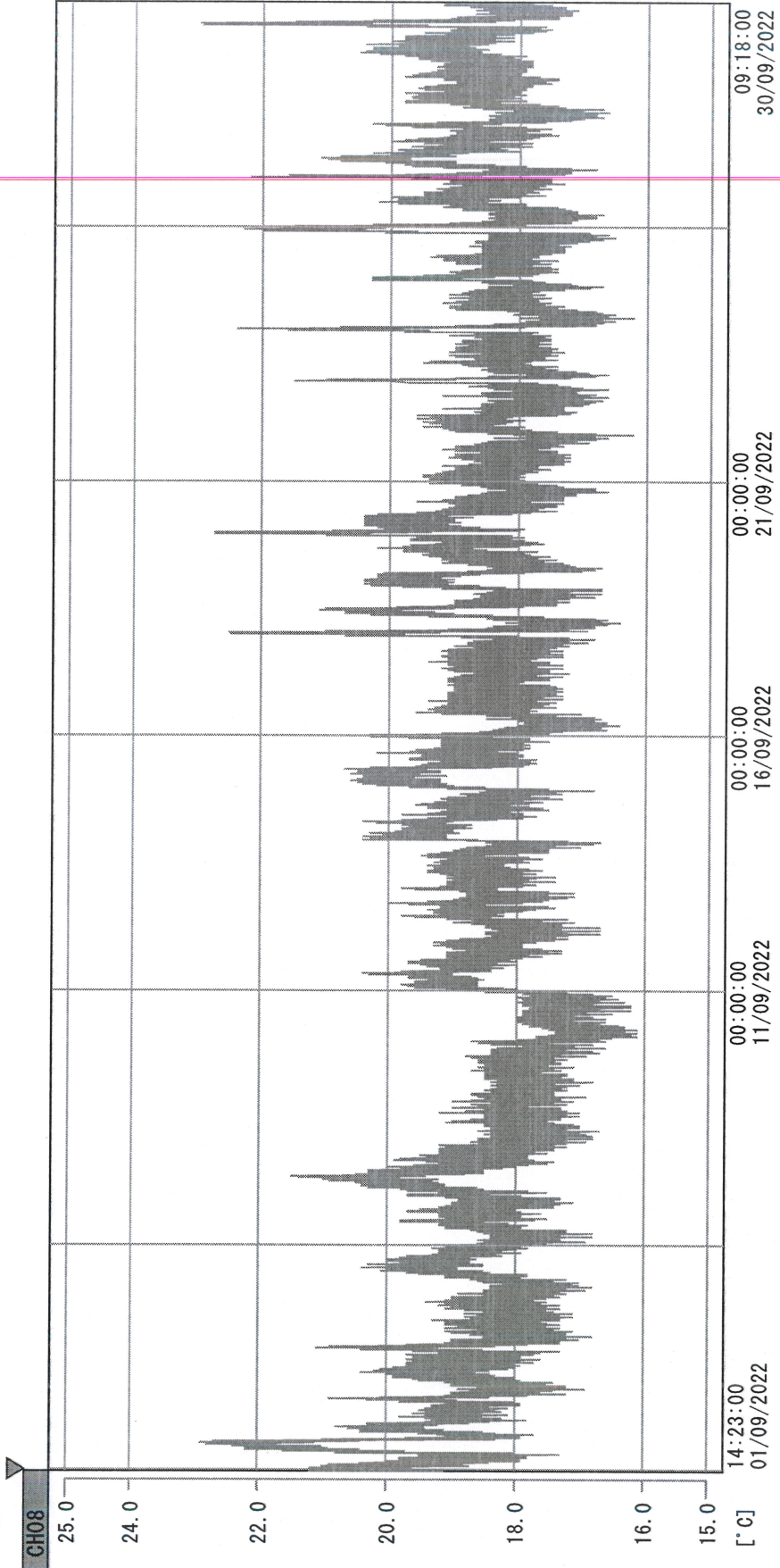
Date (DD/MMM/YYYY)	Time (24hr)	Temperature (°C)			Signature (Initial)	Comments
		Now	Max	Min		
01 / SEP / 2022	0936	22.3	22.5	19.2	KLH	
02 / SEP / 2022	1514	19.9	22.7	19.2	HSC	
03 / SEP / 2022	1159	20.1	20.8	18.7	HSC	
04 / SEP / 2022						Sunday
05 / SEP / 2022	1433	20.0	20.9	18.5	STW	
06 / SEP / 2022	1051	20.0	20.4	18.5	HSC	
07 / SEP / 2022	1049	20.3	21.3	18.9	HSC	
08 / SEP / 2022	0937	19.0	20.4	18.4	KLH	
09 / SEP / 2022	1533	18.9	19.4	18.5	HSC	
10 / SEP / 2022						HSC 12 SEP 2022 國定假日
11 / SEP / 2022						Sunday
12 / SEP / 2022	0923	19.0	20.5	17.8	HSC	
13 / SEP / 2022	1011	19.9	20.2	18.9	HSC	
14 / SEP / 2022	1021	19.9	20.4	18.6	HSC	
15 / SEP / 2022	1509	19.8	20.9	18.7	HSC	
16 / SEP / 2022	1017	19.5	20.1	18.0	HSC	
17 / SEP / 2022	1055	19.1	19.7	18.6	STW	
18 / SEP / 2022						Sunday
19 / SEP / 2022	1436	19.4	22.5	18.1	HSC	
20 / SEP / 2022	1509	19.2	22.4	18.9	HSC	
21 / SEP / 2022	1422	19.3	19.5	18.3	HSC	
22 / SEP / 2022	0836	19.2	19.6	18.0	HSC	
23 / SEP / 2022	1006	19.0	21.2	18.0	HSC	
24 / SEP / 2022	0946	18.9	21.9	17.8	STW	
25 / SEP / 2022						Sunday
26 / SEP / 2022	1139	20.0	21.6	18.2	STW	
27 / SEP / 2022	1009	20.4	21.4	18.4	HSC	
28 / SEP / 2022	1004	19.6	20.5	18.2	HSC	
29 / SEP / 2022	0953	20.3	20.4	19.0	KLH	
30 / SEP / 2022	1058	19.5	22.9	18.7	HSC	

Pharmacist:



30 SEP 2022

D:\Recorder data\RAW DATA\2022\2022 SEP\220901142244\000_220901142244.dfm
 DISP_GRP_1



01/09/2022 15:07:00

1. OPT	-22.3 [°C]	2. Multi	-20.3 [°C]	3. B1CT	23.6 [°C]	4. SC-140	4.1 [°C]
5. SC160	4.6 [°C]	6. 201SAR	6.3 [°C]	7. SC160	3.7 [°C]	8. B2CT	21.0 [°C]
TAG01	25.5 [°C]	10. KCC-3	3.7 [°C]	TAG01	-75.0 [°C]	TAG01	-75.0 [°C]

Jy Stacher
 30 SEP 2022