

Temperature Record

Investigational Product Stored Under Refrigerated Condition (2 to 8 °C)

CH07

B2 Model: SC-160E (H1224001) TP211307

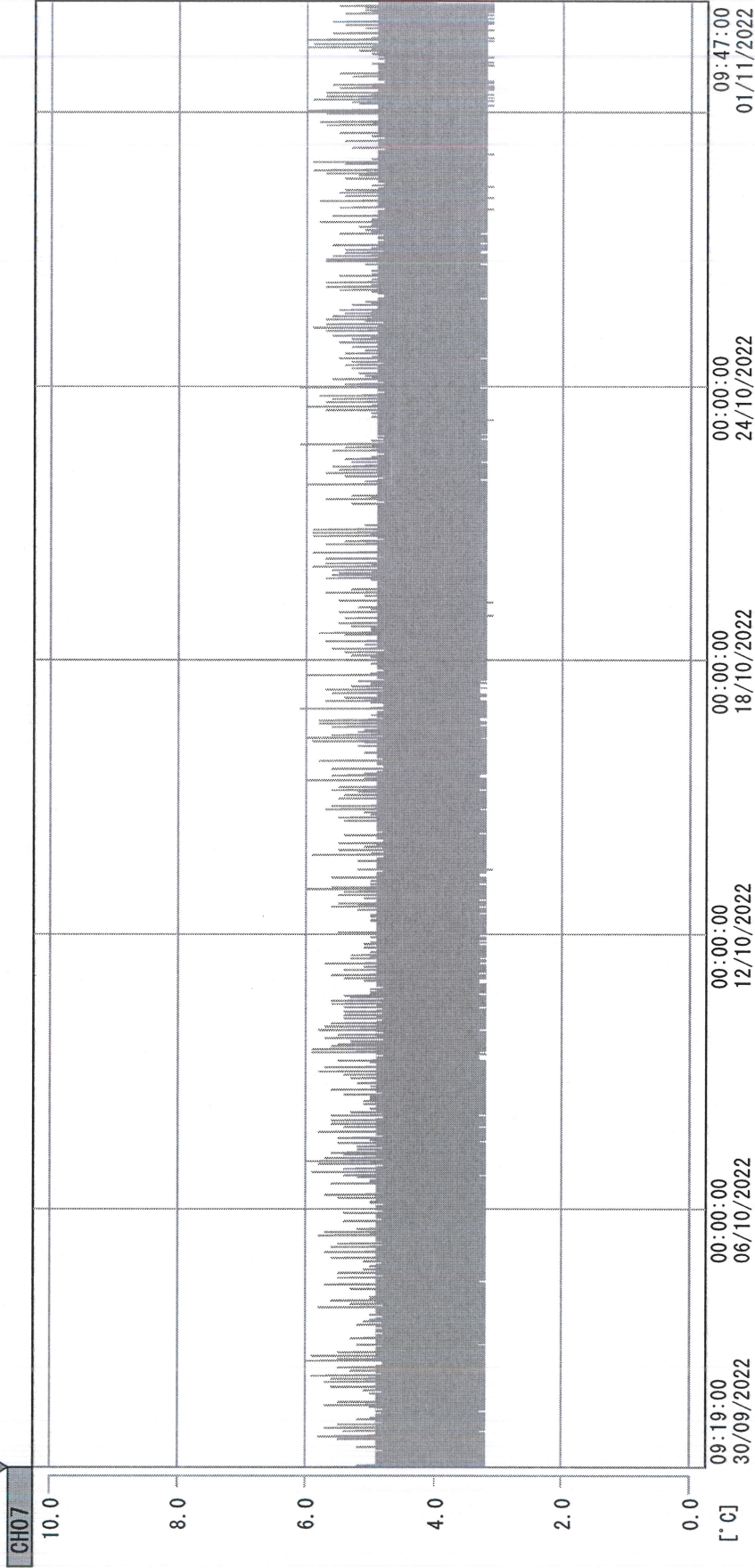
Date (DD/MMM/YYYY)	Time (24hr)	Temperature (°C)			Signature (Initial)	Comments
		Now	Max	Min		
01 / OCT / 2022	1200	3.9	4.9	3.8	YPL	
02 / OCT / 2022						Sunday
03 / OCT / 2022	1425	4.2	5.0	3.8	SYW	
04 / OCT / 2022	0931	4.1	4.9	3.8	HSC	
05 / OCT / 2022	1032	3.9	4.9	3.8	HSC	
06 / OCT / 2022	0941	4.2	4.9	3.8	HSC	
07 / OCT / 2022	0948	4.2	5.0	3.7	HSC	
08 / OCT / 2022	1053	3.8	4.9	3.8	HSC	
09 / OCT / 2022						Sunday
10 / OCT / 2022						National Day
11 / OCT / 2022	1537	3.9	5.0	3.7	HSC	
12 / OCT / 2022	1504	4.1	4.8	3.8	HSC	
13 / OCT / 2022	1010	4.0	5.0	3.7	HSC	
14 / OCT / 2022	1103	4.3	5.0	3.8	HSC	
15 / OCT / 2022	1155	3.9	5.1	3.8	YPL	
16 / OCT / 2022						Sunday
17 / OCT / 2022	1154	3.9	5.1	3.8	HSC	
18 / OCT / 2022	1007	3.9	4.9	3.8	HSC	
19 / OCT / 2022	1035	3.9	4.9	3.8	HSC	
20 / OCT / 2022	1012	3.9	5.0	3.8	HSC	
21 / OCT / 2022	1041	3.9	5.0	3.8	HSC	
22 / OCT / 2022	1147	3.9	5.0	3.8	HSC	
23 / OCT / 2022						Sunday
24 / OCT / 2022	1123	4.0	5.0	3.8	HSC	
25 / OCT / 2022	1108	4.2	4.9	3.8	HSC	
26 / OCT / 2022	1018	4.3	4.8	3.8	HSC	
27 / OCT / 2022	1005	4.0	4.9	3.8	KLH	
28 / OCT / 2022	1449	4.2	5.0	3.9	HSC	
29 / OCT / 2022	1108	4.0	4.9	3.8	HSC	
30 / OCT / 2022						Sunday
31 / OCT / 2022	1502	4.2	5.0	3.9	HSC	

Pharmacist: *Ygshch*

31 OCT 2022

0000_220930091827.dm

DISP_GRP_1



30/09/2022 09:19:00

1. OPT	-21.7 [°C]	2. Multi	-27.1 [°C]	3. B1GT	22.1 [°C]	4. SC-140	5.2 [°C]
5. SC160	4.0 [°C]	6. 201SAR	3.6 [°C]	7. SC160	3.9 [°C]	8. B2GT	18.4 [°C]
TAG01	23.8 [°C]	10. KCC-3	4.3 [°C]	TAG01	-75.0 [°C]	TAG01	-75.0 [°C]

Gshch
01/Nov 2022